

## DESCRIPTION

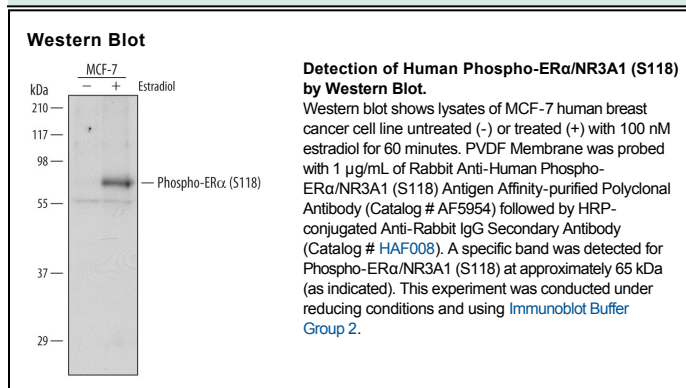
<b>Species Reactivity</b>	Human
<b>Specificity</b>	Detects human Phospho-ER $\alpha$ /NR3A1 (S118) in Western blots.
<b>Source</b>	Polyclonal Rabbit IgG
<b>Purification</b>	Antigen Affinity-purified
<b>Immunogen</b>	Phosphopeptide containing the human ER $\alpha$ /NR3A1 S118 site Accession # P03372
<b>Formulation</b>	Lyophilized from a 0.2 $\mu$ m filtered solution in PBS with Trehalose. See Certificate of Analysis for details. *Small pack size (-SP) is supplied as a 0.2 $\mu$ m filtered solution in PBS.

## APPLICATIONS

**Please Note:** Optimal dilutions should be determined by each laboratory for each application. [General Protocols](#) are available in the [Technical Information](#) section on our website.

	Recommended Concentration	Sample
<b>Western Blot</b>	1 $\mu$ g/mL	See Below

## DATA



## PREPARATION AND STORAGE

<b>Reconstitution</b>	Reconstitute at 0.2 mg/mL in sterile PBS.
<b>Shipping</b>	The product is shipped at ambient temperature. Upon receipt, store it immediately at the temperature recommended below. *Small pack size (-SP) is shipped with polar packs. Upon receipt, store it immediately at -20 to -70 °C
<b>Stability &amp; Storage</b>	<p><b>Use a manual defrost freezer and avoid repeated freeze-thaw cycles.</b></p> <ul style="list-style-type: none"> <li>● 12 months from date of receipt, -20 to -70 °C as supplied.</li> <li>● 1 month, 2 to 8 °C under sterile conditions after reconstitution.</li> <li>● 6 months, -20 to -70 °C under sterile conditions after reconstitution.</li> </ul>

## BACKGROUND

ER $\alpha$  (Estrogen receptor alpha; also Estradiol receptor and NR3A1) is a 65-70 kDa member of the NR3 subfamily, nuclear hormone receptor family of proteins. It is widely expressed, and serves as a strong activator of estrogen-responsive genes. ER $\alpha$  is normally quiescent and bound to heat-shock proteins and immunophilins. Following  $\beta$ -estradiol binding, it becomes activated, either homodimerizes or heterodimerizes with ER $\beta$ , and binds to DNA with multiple co-activators. Major phosphorylation sites exist at Tyr537, Ser167 and Ser118. Phosphorylation at Ser118 regulates ER $\alpha$ 's role in transcription and cell growth.