

DESCRIPTION

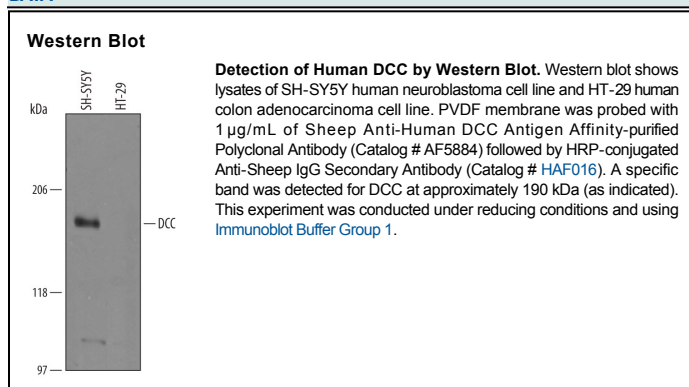
Species Reactivity	Human
Specificity	Detects human DCC in direct ELISAs and Western blots. In direct ELISAs, less than 1% cross-reactivity with recombinant human (rh) ICAM-1, rhICAM-2, rhICAM-3, rhMadCAM-1, rhPECAM-1, rhVCAM-1, and rhCEACAM-1 is observed.
Source	Polyclonal Sheep IgG
Purification	Antigen Affinity-purified
Immunogen	<i>E. coli</i> -derived recombinant human DCC Ser1323-Phe1447 Accession # P43146
Formulation	Lyophilized from a 0.2 µm filtered solution in PBS with Trehalose. See Certificate of Analysis for details. *Small pack size (-SP) is supplied as a 0.2 µm filtered solution in PBS.

APPLICATIONS

Please Note: Optimal dilutions should be determined by each laboratory for each application. *General Protocols* are available in the *Technical Information* section on our website.

	Recommended Concentration	Sample
Western Blot	1 µg/mL	See Below

DATA



PREPARATION AND STORAGE

Reconstitution	Reconstitute at 0.2 mg/mL in sterile PBS.
Shipping	The product is shipped at ambient temperature. Upon receipt, store it immediately at the temperature recommended below. *Small pack size (-SP) is shipped with polar packs. Upon receipt, store it immediately at -20 to -70 °C
Stability & Storage	Use a manual defrost freezer and avoid repeated freeze-thaw cycles. <ul style="list-style-type: none"> ● 12 months from date of receipt, -20 to -70 °C as supplied. ● 1 month, 2 to 8 °C under sterile conditions after reconstitution. ● 6 months, -20 to -70 °C under sterile conditions after reconstitution.

BACKGROUND

Deleted in colorectal cancer (DCC) is a 170-190 kDa transmembrane glycoprotein that contains four Ig-like domains and six fibronectin type III repeats in its extracellular domain. DCC is expressed on axons during development where its binding to Netrin-1 regulates axon migration and myelination. It inhibits apoptosis when bound by Netrin-1 and can induce apoptosis in the absence of ligand. DCC also functions as an adhesion molecule and a tumor suppressor on intestinal epithelial cells. Deficiencies in DCC function are associated with the development and metastasis of many tumors. Within aa 1323-1447 of the cytoplasmic domain, human DCC shares 98% aa sequence identity with the mouse and rat DCC.

PRODUCT SPECIFIC NOTICES

This product or the use of this product is covered by U.S. Patents owned by The Regents of the University of California. This product is for research use only and is not to be used for commercial purposes. Use of this product to produce products for sale or for diagnostic, therapeutic or drug discovery purposes is prohibited. In order to obtain a license to use this product for such purposes, contact The Regents of the University of California.

U.S. Patent # 5,939,271, 6,277,585, and other U.S. and international patents pending.