

DESCRIPTION

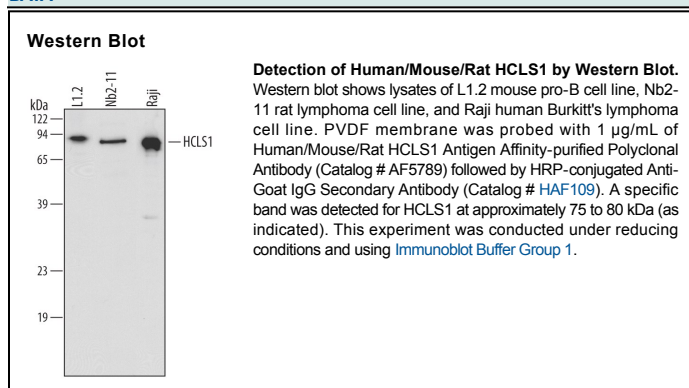
Species Reactivity	Human/Mouse/Rat
Specificity	Detects endogenous human, mouse and rat HCLS1 in Western blots.
Source	Polyclonal Goat IgG
Purification	Antigen Affinity-purified
Immunogen	<i>E. coli</i> -derived recombinant human HCLS1 Met1-Gly84 Accession # P14317
Formulation	Lyophilized from a 0.2 µm filtered solution in PBS with Trehalose. See Certificate of Analysis for details. *Small pack size (-SP) is supplied as a 0.2 µm filtered solution in PBS.

APPLICATIONS

Please Note: Optimal dilutions should be determined by each laboratory for each application. *General Protocols* are available in the *Technical Information* section on our website.

	Recommended Concentration	Sample
Western Blot	1 µg/mL	See Below

DATA



PREPARATION AND STORAGE

Reconstitution	Reconstitute at 0.2 mg/mL in sterile PBS.
Shipping	The product is shipped at ambient temperature. Upon receipt, store it immediately at the temperature recommended below. *Small pack size (-SP) is shipped with polar packs. Upon receipt, store it immediately at -20 to -70 °C
Stability & Storage	Use a manual defrost freezer and avoid repeated freeze-thaw cycles. <ul style="list-style-type: none"> ● 12 months from date of receipt, -20 to -70 °C as supplied. ● 1 month, 2 to 8 °C under sterile conditions after reconstitution. ● 6 months, -20 to -70 °C under sterile conditions after reconstitution.

BACKGROUND

HCLS1 (Hematopoietic lineage cell-specific protein; also HS1 and LckBP1) is a cytoplasmic substrate for non-receptor type protein-tyrosine kinases. Although its predicted MW is 54 kDa, it migrates anomalously at 75-80 kDa in SDS-PAGE. HCLS1 is restricted to myeloid/lymphoid lineage cell types, including platelets, B cells, T cells and mast cells. HCLS1 binds to F-actin and promotes actin polymerization. It also serves as an intermediate for *src*-mediated signal transduction. Human HCLS1 is 486 amino acids (aa) in length. It contains one HAX1 binding site (aa 27-66), three-plus cortactin type repeats (aa 79-212), a coiled-coil region (aa 215-280) and an SH3 domain (aa 437-484). HCLS1 is initially phosphorylated by Syk at Tyr378 and Tyr397, followed by a Src family kinase phosphorylation at Tyr222. This activates HCLS1, allowing it to interact with Ras-associated Grb2.