

DESCRIPTION

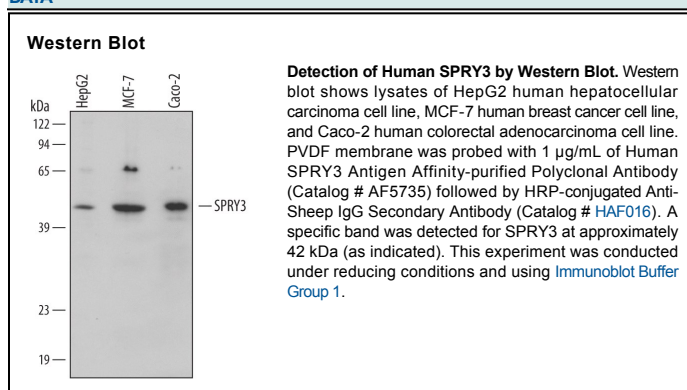
Species Reactivity	Human
Specificity	Detects endogenous human SPRY3 in Western blots.
Source	Polyclonal Sheep IgG
Purification	Antigen Affinity-purified
Immunogen	<i>E. coli</i> -derived recombinant human SPRY3 Met1-Glu142 Accession # O43610
Formulation	Lyophilized from a 0.2 µm filtered solution in PBS with Trehalose. See Certificate of Analysis for details. *Small pack size (-SP) is supplied as a 0.2 µm filtered solution in PBS.

APPLICATIONS

Please Note: Optimal dilutions should be determined by each laboratory for each application. *General Protocols* are available in the *Technical Information* section on our website.

	Recommended Concentration	Sample
Western Blot	1 µg/mL	See Below

DATA



PREPARATION AND STORAGE

Reconstitution	Reconstitute at 0.2 mg/mL in sterile PBS.
Shipping	The product is shipped at ambient temperature. Upon receipt, store it immediately at the temperature recommended below. *Small pack size (-SP) is shipped with polar packs. Upon receipt, store it immediately at -20 to -70 °C
Stability & Storage	Use a manual defrost freezer and avoid repeated freeze-thaw cycles. <ul style="list-style-type: none"> ● 12 months from date of receipt, -20 to -70 °C as supplied. ● 1 month, 2 to 8 °C under sterile conditions after reconstitution. ● 6 months, -20 to -70 °C under sterile conditions after reconstitution.

BACKGROUND

SPRY3 (sprouty homolog 3) is a member of the sprouty family of proteins. SPRY3 appears to modulate Ras/MAPK pathway signaling following RTK activation. Human SPRY3 is 288 amino acids (aa) in length and contains one SH2-binding domain (aa 25-30), a PEST sequence (aa 82-93), and a Cys-rich domain (aa 147-270). SPRY3 forms homo- and hetero-oligomers with other SPRY family molecules. It also undergoes phosphorylation, ubiquitination and palmitoylation, the latter of which induces SPRY3 to associate with cell membranes.