

DESCRIPTION

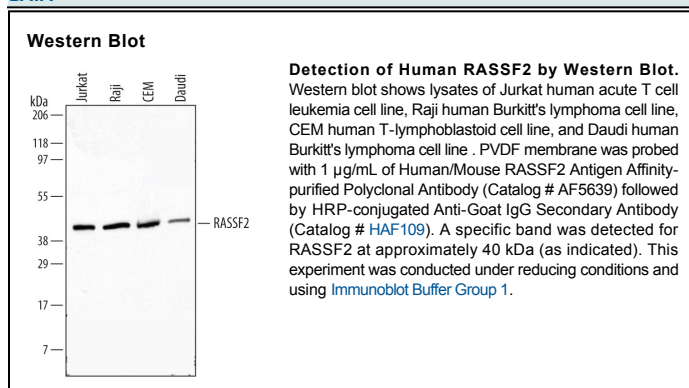
Species Reactivity	Human/Mouse
Specificity	Detects endogenous human and mouse RASSF2 in Western blots.
Source	Polyclonal Goat IgG
Purification	Antigen Affinity-purified
Immunogen	<i>E. coli</i> -derived recombinant human RASSF2 Lys100-Gly230 Accession # P50749
Formulation	Lyophilized from a 0.2 µm filtered solution in PBS with Trehalose. See Certificate of Analysis for details. *Small pack size (-SP) is supplied as a 0.2 µm filtered solution in PBS.

APPLICATIONS

Please Note: Optimal dilutions should be determined by each laboratory for each application. *General Protocols* are available in the *Technical Information* section on our website.

	Recommended Concentration	Sample
Western Blot	1 µg/mL	See Below

DATA



PREPARATION AND STORAGE

Reconstitution	Reconstitute at 0.2 mg/mL in sterile PBS.
Shipping	The product is shipped at ambient temperature. Upon receipt, store it immediately at the temperature recommended below. *Small pack size (-SP) is shipped with polar packs. Upon receipt, store it immediately at -20 to -70 °C
Stability & Storage	Use a manual defrost freezer and avoid repeated freeze-thaw cycles. <ul style="list-style-type: none"> ● 12 months from date of receipt, -20 to -70 °C as supplied. ● 1 month, 2 to 8 °C under sterile conditions after reconstitution. ● 6 months, -20 to -70 °C under sterile conditions after reconstitution.

BACKGROUND

RASSF2 (Ras association domain-containing protein 2; also RASSF2A) is a 34-36 kDa member of the RASSF family of proteins. It is widely expressed, and serves as a tumor suppressor by interacting with K-Ras in a GTP-dependent manner, and activating caspase-3 and inducing apoptosis. Human RASSF2 is 326 amino acids (aa) in length. It contains a bipartite NLS (aa 151-167), a Ras-association domain (aa 176-264) and a SARAH domain (aa 272-319) that mediates homo- and heterotypic interactions. Multiple isoforms exist. One shows an insertion of 13 aa after Lys213, a second shows a three aa substitution for aa 305-326, and a third shows a 20 aa substitution for aa 1-96, accompanied by a three aa substitution for aa 231-326. RASSF2 is often found down regulated in lung-derived tumor cell lines.