

#### DESCRIPTION

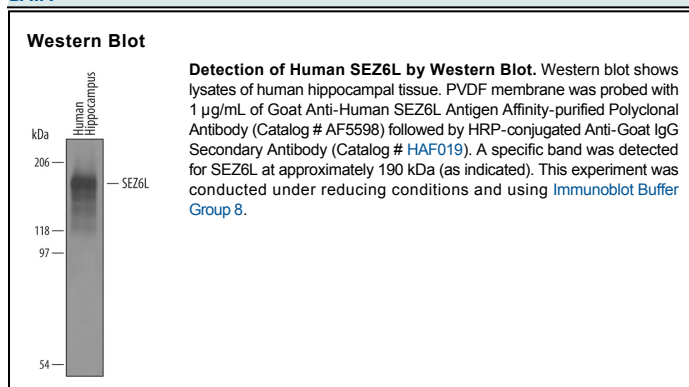
<b>Species Reactivity</b>	Human
<b>Specificity</b>	Detects human SEZ6L in direct ELISAs and Western blots. In direct ELISAs, approximately 25% cross-reactivity with recombinant mouse (rm) BSRP-B is observed and less than 2% cross-reactivity with rmBSRP-A and rmBSRP-C is observed.
<b>Source</b>	Polyclonal Goat IgG
<b>Purification</b>	Antigen Affinity-purified
<b>Immunogen</b>	Chinese hamster ovary cell line CHO-derived recombinant human SEZ6L Leu29-Ala958 Accession # Q9BYH1
<b>Formulation</b>	Lyophilized from a 0.2 µm filtered solution in PBS with Trehalose. See Certificate of Analysis for details. *Small pack size (-SP) is supplied as a 0.2 µm filtered solution in PBS.

#### APPLICATIONS

**Please Note:** Optimal dilutions should be determined by each laboratory for each application. *General Protocols* are available in the *Technical Information* section on our website.

	<b>Recommended Concentration</b>	<b>Sample</b>
<b>Western Blot</b>	1 µg/mL	See Below

#### DATA



#### PREPARATION AND STORAGE

<b>Reconstitution</b>	Reconstitute at 0.2 mg/mL in sterile PBS.
<b>Shipping</b>	The product is shipped at ambient temperature. Upon receipt, store it immediately at the temperature recommended below. *Small pack size (-SP) is shipped with polar packs. Upon receipt, store it immediately at -20 to -70 °C
<b>Stability &amp; Storage</b>	<b>Use a manual defrost freezer and avoid repeated freeze-thaw cycles.</b> <ul style="list-style-type: none"> <li>● 12 months from date of receipt, -20 to -70 °C as supplied.</li> <li>● 1 month, 2 to 8 °C under sterile conditions after reconstitution.</li> <li>● 6 months, -20 to -70 °C under sterile conditions after reconstitution.</li> </ul>

#### BACKGROUND

SEZ6L (Seizure 6-Like protein; also BSRP-B in rodent) is a 200 kDa member of the SEZ6 family of proteins. It is expressed in the plasma membrane and ER of CNS neurons and lung bronchiolar epithelium, and likely regulates PKCα activation. Mature human SEZ6L is a 996 amino acid (aa) type I transmembrane protein. It contains a 930 aa extracellular domain (ECD) (aa 29-958) plus a 45 aa cytoplasmic tail. The ECD shows three CUB domains and five short consensus repeats (SCRs). There are multiple isoforms possible for SEZ6L. One shows a deletion of aa 933-943, and a second shows the same deletion coupled to a Thr substitution for aa 803-867. A third isoform contains a Leu substitution for aa 867-943. An alternative start site is reported at Met228. This start site may occur individually, or be accompanied by a deletion of aa 932-944, the same deletion of aa 932-944 coupled to a Thr substitution for aa 803-867, or a dual deletion of aa 869-945 and 1016-1024. Over aa 29-958, human BSRP-B is 80% aa identical to mouse BSRP-B.