

#### DESCRIPTION

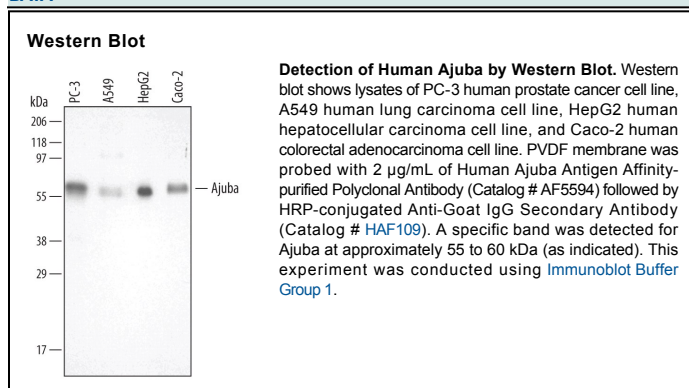
<b>Species Reactivity</b>	Human
<b>Specificity</b>	Detects endogenous human Ajuba in Western blots.
<b>Source</b>	Polyclonal Goat IgG
<b>Purification</b>	Antigen Affinity-purified
<b>Immunogen</b>	<i>E. coli</i> -derived recombinant human Ajuba Met1-Arg121 Accession # Q96IF1
<b>Formulation</b>	Lyophilized from a 0.2 µm filtered solution in PBS with Trehalose. See Certificate of Analysis for details. *Small pack size (-SP) is supplied as a 0.2 µm filtered solution in PBS.

#### APPLICATIONS

**Please Note:** Optimal dilutions should be determined by each laboratory for each application. *General Protocols* are available in the *Technical Information* section on our website.

	Recommended Concentration	Sample
<b>Western Blot</b>	2 µg/mL	See Below

#### DATA



#### PREPARATION AND STORAGE

<b>Reconstitution</b>	Reconstitute at 0.2 mg/mL in sterile PBS.
<b>Shipping</b>	The product is shipped at ambient temperature. Upon receipt, store it immediately at the temperature recommended below. *Small pack size (-SP) is shipped with polar packs. Upon receipt, store it immediately at -20 to -70 °C
<b>Stability &amp; Storage</b>	<b>Use a manual defrost freezer and avoid repeated freeze-thaw cycles.</b> <ul style="list-style-type: none"> <li>● 12 months from date of receipt, -20 to -70 °C as supplied.</li> <li>● 1 month, 2 to 8 °C under sterile conditions after reconstitution.</li> <li>● 6 months, -20 to -70 °C under sterile conditions after reconstitution.</li> </ul>

#### BACKGROUND

Ajuba (an Urdu word meaning "curiosity") is a 55-60 kDa member of the Zyxin/Ajuba family of proteins. Ajuba is found in keratinocytes, astrocytes and neurons, and exhibits multiple functions. It shuttles between the nucleus and cytosol, and participates in  $\alpha$ -catenin:F-actin binding,  $\beta$ -catenin binding and phosphorylation, p62 aPKC scaffold protein binding and NF- $\kappa$ B activation, and Aurora-A binding and phosphorylation. Human Ajuba is 538 amino acids (aa) in length. It contains a Pro-rich preLIM region that binds actin and Grb2 (aa 1-335), an NES (aa 280-287), and three LIM domains that bind multiple proteins (aa 336-397, 401-461 and 462-530).