

DESCRIPTION

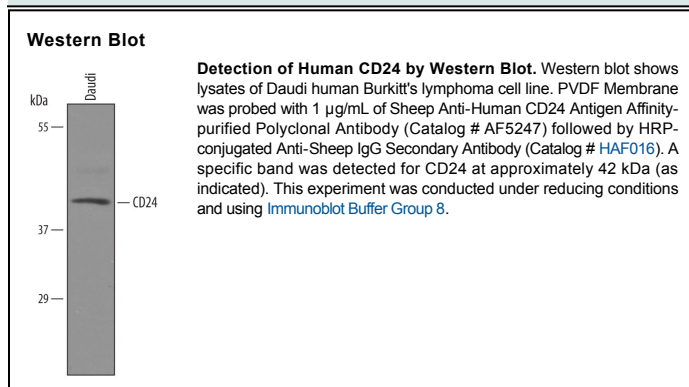
Species Reactivity	Human
Specificity	Detects human CD24 in direct ELISAs and Western blots. In direct ELISAs, less than 1% cross-reactivity with recombinant mouse CD24a is observed.
Source	Polyclonal Sheep IgG
Purification	Antigen Affinity-purified
Immunogen	Chinese hamster ovary cell line CHO-derived recombinant human CD24 Ser27-Gly59 Accession # NP_037362
Formulation	Lyophilized from a 0.2 µm filtered solution in PBS with Trehalose. See Certificate of Analysis for details. *Small pack size (-SP) is supplied as a 0.2 µm filtered solution in PBS.

APPLICATIONS

Please Note: Optimal dilutions should be determined by each laboratory for each application. *General Protocols* are available in the *Technical Information* section on our website.

	Recommended Concentration	Sample
Western Blot	1 µg/mL	See Below
Immunohistochemistry	5-15 µg/mL	Immersion fixed paraffin-embedded sections of human colon cancer tissue and lymph node tissue

DATA



PREPARATION AND STORAGE

Reconstitution	Reconstitute at 0.2 mg/mL in sterile PBS.
Shipping	The product is shipped at ambient temperature. Upon receipt, store it immediately at the temperature recommended below. *Small pack size (-SP) is shipped with polar packs. Upon receipt, store it immediately at -20 to -70 °C
Stability & Storage	Use a manual defrost freezer and avoid repeated freeze-thaw cycles. <ul style="list-style-type: none"> • 12 months from date of receipt, -20 to -70 °C as supplied. • 1 month, 2 to 8 °C under sterile conditions after reconstitution. • 6 months, -20 to -70 °C under sterile conditions after reconstitution.

BACKGROUND

CD24 (signal transducer 24; also HSA/heat shock antigen) is a variably glycosylated, 35-50 kDa member of the CD24 family of proteins. It is a GPI-linked sialoprotein that is expressed on B cell precursors and unactivated B cells, keratinocytes, and neutrophils and thymocytes. Ligation of CD24 appears to inhibit B cell differentiation, likely through the initiation of apoptosis. Potential CD24 ligands include P-Selectin. The human CD24 precursor is 80 amino acids (aa) in length. It contains a 26 aa signal sequence plus a cleavable C-terminal propeptide (aa 60-80). There is one potential alternate start site at Met5. Over aa 27-59, human CD24 shares only 30% aa identity with mouse CD24.