

## DESCRIPTION

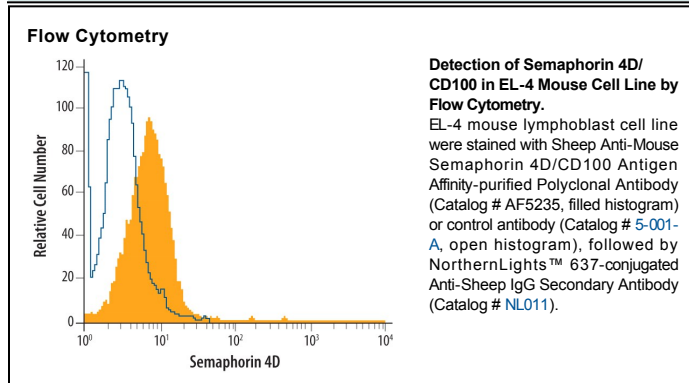
<b>Species Reactivity</b>	Mouse
<b>Specificity</b>	Detects mouse Semaphorin 4D/CD100 in direct ELISAs and Western blots. In direct ELISAs and Western blots, less than 5% cross-reactivity with recombinant human (rh) Semaphorin 3A, rhSemaphorin 4B, and rhSemaphorin 6C is observed.
<b>Source</b>	Polyclonal Sheep IgG
<b>Purification</b>	Antigen Affinity-purified
<b>Immunogen</b>	Mouse myeloma cell line NS0-derived recombinant mouse Semaphorin 4D/CD100 Phe24-Thr657 Accession # NP_038688
<b>Formulation</b>	Lyophilized from a 0.2 µm filtered solution in PBS with Trehalose. See Certificate of Analysis for details. *Small pack size (-SP) is supplied as a 0.2 µm filtered solution in PBS.

## APPLICATIONS

**Please Note:** Optimal dilutions should be determined by each laboratory for each application. *General Protocols* are available in the *Technical Information* section on our website.

	<b>Recommended Concentration</b>	<b>Sample</b>
<b>Western Blot</b>	0.1 µg/mL	Recombinant Mouse Semaphorin 4D/CD100
<b>Flow Cytometry</b>	2.5 µg/10 <sup>6</sup> cells	See Below
<b>Immunohistochemistry</b>	5-15 µg/mL	Immersion fixed frozen sections of mouse embryonic eye cup (15 d.p.c.)

## DATA



## PREPARATION AND STORAGE

<b>Reconstitution</b>	Reconstitute at 0.2 mg/mL in sterile PBS.
<b>Shipping</b>	The product is shipped at ambient temperature. Upon receipt, store it immediately at the temperature recommended below. *Small pack size (-SP) is shipped with polar packs. Upon receipt, store it immediately at -20 to -70 °C
<b>Stability &amp; Storage</b>	<b>Use a manual defrost freezer and avoid repeated freeze-thaw cycles.</b> <ul style="list-style-type: none"> <li>● 12 months from date of receipt, -20 to -70 °C as supplied.</li> <li>● 1 month, 2 to 8 °C under sterile conditions after reconstitution.</li> <li>● 6 months, -20 to -70 °C under sterile conditions after reconstitution.</li> </ul>

## BACKGROUND

Semaphorin 4D (Sema4D/CD100, previously sem J, G or C-like 2) is a widely expressed 150 kDa type I transmembrane glycoprotein of the Class 4 Semaphorin family with activity in the immune and nervous systems. The 861 amino acid (aa) Sema4D contains a 710 aa extracellular domain (ECD) with a sema domain and an immunoglobulin-like domain. Within the ECD region used as an immunogen, mouse Sema4D shares 87% and 93% aa identity with human and rat Sema4D, respectively. A soluble, active 120 kDa form is produced proteolytically upon activation of B and T cells. Sema4D binds Plexin-B1, but also CD72 on B and dendritic cells. In developing neurons, Sema-4D assists in guidance. Sema4D is proangiogenic when expressed by tumor-associated macrophages.