

DESCRIPTION

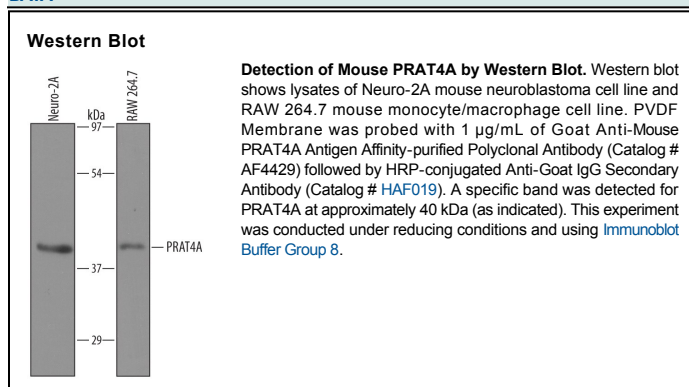
Species Reactivity	Mouse
Specificity	Detects mouse PRAT4A in direct ELISAs and Western blots. In direct ELISAs, approximately 10% cross-reactivity with recombinant mouse PRAT4B is observed.
Source	Polyclonal Goat IgG
Purification	Antigen Affinity-purified
Immunogen	Mouse myeloma cell line NS0-derived recombinant mouse PRAT4A isoform 1 Glu38-Leu276 Accession # Q9DAU1
Formulation	Lyophilized from a 0.2 µm filtered solution in PBS with Trehalose. See Certificate of Analysis for details. *Small pack size (-SP) is supplied as a 0.2 µm filtered solution in PBS.

APPLICATIONS

Please Note: Optimal dilutions should be determined by each laboratory for each application. [General Protocols](#) are available in the [Technical Information](#) section on our website.

	Recommended Concentration	Sample
Western Blot	1 µg/mL	See Below

DATA



PREPARATION AND STORAGE

Reconstitution	Reconstitute at 0.2 mg/mL in sterile PBS.
Shipping	The product is shipped at ambient temperature. Upon receipt, store it immediately at the temperature recommended below. *Small pack size (-SP) is shipped with polar packs. Upon receipt, store it immediately at -20 to -70 °C
Stability & Storage	Use a manual defrost freezer and avoid repeated freeze-thaw cycles. <ul style="list-style-type: none"> ● 12 months from date of receipt, -20 to -70 °C as supplied. ● 1 month, 2 to 8 °C under sterile conditions after reconstitution. ● 6 months, -20 to -70 °C under sterile conditions after reconstitution.

BACKGROUND

PRAT4A (Protein associated with [TLR4-A](#)) is a ubiquitously expressed, 40 kDa protein that participates in Toll receptor expression. Mouse PRAT4A is 276 amino acids (aa) in length. It contains a putative signal sequence of 37 aa, followed by a 239 aa mature region. Although the presence of a signal sequence suggests it is secreted, its best known activity involves an intracellular association with TLR4. PRAT4A appears to facilitate the maturation and expression of TLR4 on the cell surface. Studies suggest this involves the C-terminal 60 amino acids. Mature mouse PRAT4A shares 90% and 96% aa identity with human and rat PRAT4A, respectively.