

## ORDERING INFORMATION

**Catalog Number:** AF4246

**Lot Number:** ZOK02

**Size:** 100 µg

**Formulation:** 0.2 µm filtered solution in PBS with 5% trehalose

**Storage:** -20° C

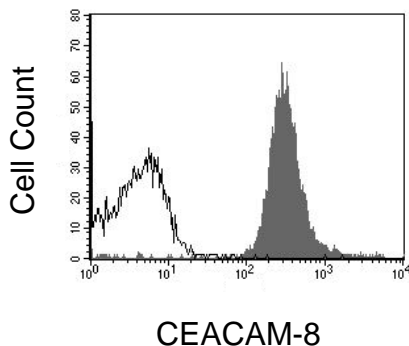
**Reconstitution:** sterile PBS

**Specificity:** human CEACAM-8

**Immunogen:** *E. coli*-derived rhCEACAM-8 (aa 35 - 141)

**Ig Type:** sheep IgG

**Applications:** Western blot  
Flow cytometry  
Direct ELISA



Blood-derived granulocytes were stained with anti-CEACAM-8 (R&D Systems, Cat. # AF4246, filled histogram), or control antibody (R&D Systems, Cat. # 5-001-A, open histogram) followed by NL637-conjugated anti-sheep IgG (R&D Systems, Cat. # NL011).

## Background

CEACAM-8 (carcinoembryonic antigen-related cell adhesion molecule 8; also CD66b, CD67 and NCA-95) is a 90 kDa member of the CEACAM subfamily of the CEA family of proteins. It is expressed by neutrophils and eosinophils, and serves as a binding partner for CEACAM-6 and Galectin-3. Mature human CEACAM-8 is a 287 amino acid GPI-linked glycoprotein. It contains one V-type and two C2-type Ig-like domains. No definitive rodent CEACAM-8 has been reported.

## Preparation

Produced in sheep immunized with purified, *E. coli*-derived, recombinant human CEACAM-8 (rhCEACAM-8; aa 35 - 141; Accession # P31997). Human CEACAM-8 specific IgG was purified by human CEACAM-8 affinity chromatography.

## Formulation

Lyophilized from a 0.2 µm filtered solution in phosphate-buffered saline (PBS) with 5% trehalose.

## Reconstitution

Reconstitute with sterile PBS. If 0.5 mL of PBS is used, the antibody concentration will be 0.2 mg/mL.

## Storage

Lyophilized samples are stable for twelve months from date of receipt when stored at -20° C to -70° C. Upon reconstitution, the antibody can be stored at 2° - 8° C for 1 month without detectable loss of activity. Reconstituted antibody can also be aliquotted and stored frozen at -20° C to -70° C in a manual defrost freezer for six months without detectable loss of activity. **Avoid repeated freeze-thaw cycles.**

## Specificity

This antibody has been selected for its ability to recognize human CEACAM-8 in the applications listed below.

## Applications

**Western blot** - This antibody can be used at 0.1 - 0.2 µg/mL with the appropriate secondary reagents to detect human CEACAM-8. The detection limit for rhCEACAM-8 is approximately 1 ng/lane under non-reducing and reducing conditions.

**Flow cytometry** - This antibody was tested in flow cytometry using blood-derived granulocytes. Dilute this antibody to 25 µg/mL and add 10 µL of the diluted solution to 1 - 2.5 x 10<sup>5</sup> cells in a total reaction volume not exceeding 200 µL. The binding of unlabeled antibodies may be visualized by adding a secondary developing reagent such as anti-sheep IgG conjugated to a fluorochrome.

**Direct ELISA** - This antibody can be used at 0.5 - 1.0 µg/mL with the appropriate secondary reagents to detect human CEACAM-8. The detection limit for rhCEACAM-8 is approximately 1 ng/well. In this format, this antibody shows less than 10% cross-reactivity rhCEACAM-3, rhCEACAM-6, and rhCEACAM-7.

**Optimal dilutions should be determined by each laboratory for each application.**

FOR RESEARCH USE ONLY. NOT FOR USE IN HUMANS.

**R&D Systems, Inc.**  
**1-800-343-7475**