

DESCRIPTION

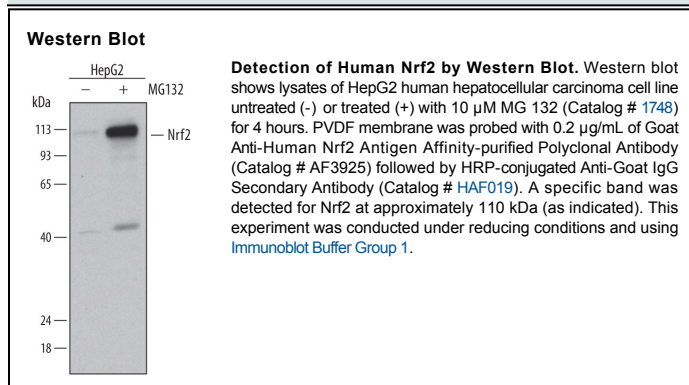
Species Reactivity	Human
Specificity	Detects human Nrf2 in direct ELISAs and Western blots. In direct ELISAs, approximately 45% cross-reactivity with recombinant mouse Nrf2 is observed.
Source	Polyclonal Goat IgG
Purification	Antigen Affinity-purified
Immunogen	<i>E. coli</i> -derived recombinant human Nrf2 Met17-Asn605 Accession # Q16236
Formulation	Lyophilized from a 0.2 µm filtered solution in PBS with Trehalose. See Certificate of Analysis for details. *Small pack size (-SP) is supplied as a 0.2 µm filtered solution in PBS.

APPLICATIONS

Please Note: Optimal dilutions should be determined by each laboratory for each application. [General Protocols](#) are available in the [Technical Information](#) section on our website.

	Recommended Concentration	Sample
Western Blot	0.2 µg/mL	See Below

DATA



PREPARATION AND STORAGE

Reconstitution	Sterile PBS to a final concentration of 0.2 mg/mL.
Shipping	The product is shipped at ambient temperature. Upon receipt, store it immediately at the temperature recommended below. *Small pack size (-SP) is shipped with polar packs. Upon receipt, store it immediately at -20 to -70 °C
Stability & Storage	Use a manual defrost freezer and avoid repeated freeze-thaw cycles. <ul style="list-style-type: none"> ● 12 months from date of receipt, -20 to -70 °C as supplied. ● 1 month, 2 to 8 °C under sterile conditions after reconstitution. ● 6 months, -20 to -70 °C under sterile conditions after reconstitution.

BACKGROUND

NF-E2 related factor 2 (Nrf2) is a member of the cap 'n' collar family of basic leucine zipper transcription factors. By binding antioxidant response elements (AREs), Nrf2 activates the transcription of genes encoding antioxidant and phase II drug-metabolizing enzymes needed to protect cells against oxidative damage. Transcriptional targets regulated by Nrf2 include genes encoding glutathione S-transferases, superoxide dismutase-1, and heme oxygenase-1.