

DESCRIPTION

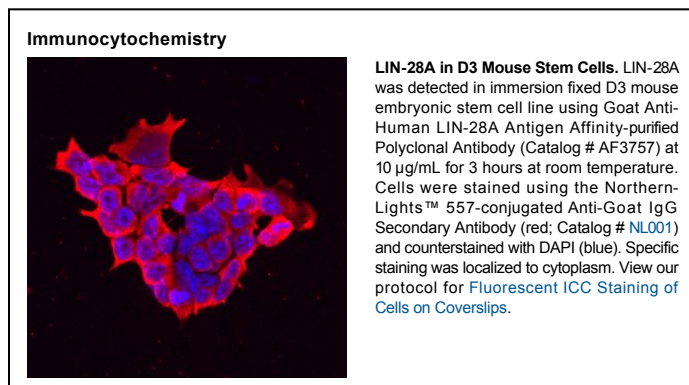
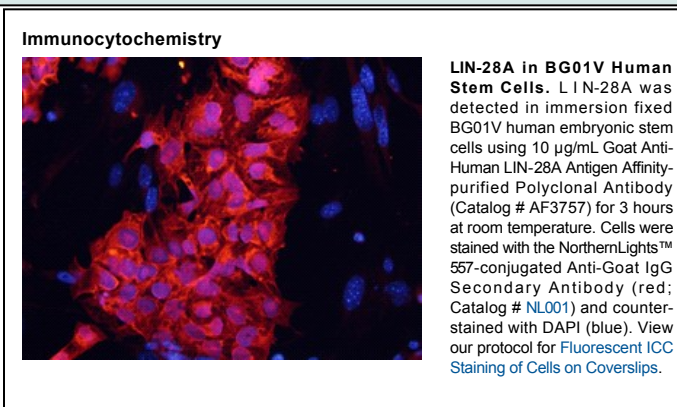
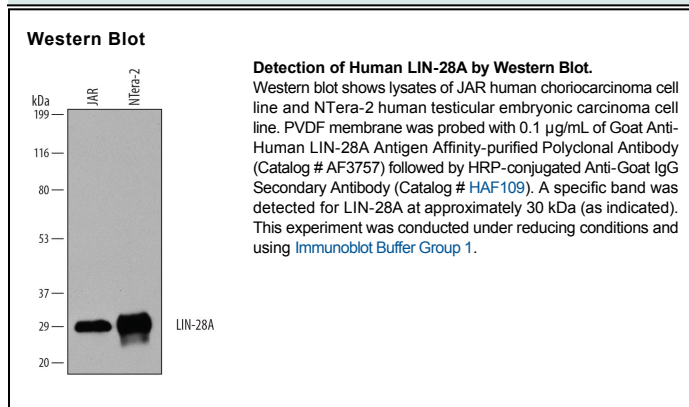
Species Reactivity	Human
Specificity	Detects human LIN-28A in direct ELISAs and Western blots.
Source	Polyclonal Goat IgG
Purification	Antigen Affinity-purified
Immunogen	<i>E. coli</i> -derived recombinant human LIN-28A Met1-Asn209 Accession # Q9H9Z2
Formulation	Lyophilized from a 0.2 µm filtered solution in PBS with Trehalose. See Certificate of Analysis for details. *Small pack size (-SP) is supplied as a 0.2 µm filtered solution in PBS.

APPLICATIONS

Please Note: Optimal dilutions should be determined by each laboratory for each application. *General Protocols* are available in the *Technical Information* section on our website.

	Recommended Concentration	Sample
Western Blot	0.1 µg/mL	See Below
Immunocytochemistry	5-15 µg/mL	See Below

DATA



PREPARATION AND STORAGE

Reconstitution	Reconstitute at 0.2 mg/mL in sterile PBS.
Shipping	The product is shipped at ambient temperature. Upon receipt, store it immediately at the temperature recommended below. *Small pack size (-SP) is shipped with polar packs. Upon receipt, store it immediately at -20 to -70 °C
Stability & Storage	Use a manual defrost freezer and avoid repeated freeze-thaw cycles. <ul style="list-style-type: none"> • 12 months from date of receipt, -20 to -70 °C as supplied. • 1 month, 2 to 8 °C under sterile conditions after reconstitution. • 6 months, -20 to -70 °C under sterile conditions after reconstitution.

BACKGROUND

Human LIN-28 (Protein lin-28 homolog A; CSDD1, LIN28 and ZCCHC1) is a 30 kDa (209 amino acids) cytoplasmic RNA-binding protein with an N-terminal cold shock domain and two C-terminal CCHC zinc finger domains. It is expressed by various undifferentiated embryonic cell types and is also present in adult cardiac and skeletal muscle. Expression of LIN-28 has been shown to be regulated by micro-RNA. Human LIN-28 shares 98% and 97% amino acid sequence homology with rat and mouse LIN-28, respectively.