



Anti-human CD48/SLAMF2 Antibody

ORDERING INFORMATION

Catalog Number: AF3644

Lot Number: YFO01

Size: 100 µg

Formulation: 0.2 µm filtered solution in PBS with 5% trehalose

Storage: -20° C

Reconstitution: sterile PBS

Specificity: human CD48

Immunogen: NS0-derived rhCD48

Ig Type: goat IgG

Applications: Western blot
Flow Cytometry
Direct ELISA

Preparation

Produced in goats immunized with purified, NS0-derived, recombinant human CD48 (rhCD48; R&D Systems Catalog # 3644-CD). Human CD48 specific IgG was purified by human CD48 affinity chromatography.

Formulation

Lyophilized from a 0.2 µm filtered solution in phosphate-buffered saline (PBS) with 5% trehalose.

Reconstitution

Reconstitute with sterile PBS. If 0.5 mL of PBS is used, the antibody concentration will be 0.2 mg/mL.

Storage

Lyophilized samples are stable for twelve months from date of receipt when stored at -20° C to -70° C. Upon reconstitution, the antibody can be stored at 2° - 8° C for 1 month without detectable loss of activity. Reconstituted antibody can also be aliquotted and stored frozen at -20° C to -70° C **in a manual defrost freezer** for six months without detectable loss of activity. **Avoid repeated freeze-thaw cycles.**

Specificity

This antibody has been selected for its ability to recognize human CD48 in the applications listed below. In direct ELISAs and Western blots, this antibody shows less than 5% cross-reactivity with rmCD48 and rhOX40.

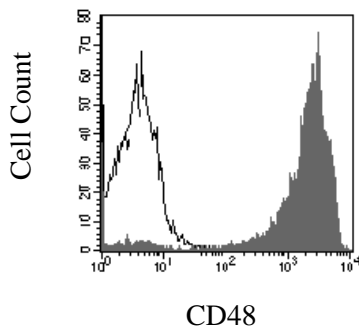
Applications

Western blot - This antibody can be used at 0.1 - 0.2 µg/mL with the appropriate secondary reagents to detect human CD48. The detection limit for rhCD48 is approximately 2 ng/lane under non-reducing and reducing conditions.

Flow Cytometry - This antibody is validated for flow cytometry using blood-derived lymphocytes. Dilute this antibody to 25 µg/mL and add 10 µL of this diluted solution to 1-2.5 x 10⁵ cells in a total reaction volume not exceeding 200 µL. The binding of unlabeled antibodies may be visualized by adding a secondary developing reagent such as anti-goat IgG conjugated to a fluorochrome.

Direct ELISA - This antibody can be used at 0.5 - 1.0 µg/mL with the appropriate secondary reagents to detect human CD48. The detection limit for rhCD48 is approximately 1 ng/well.

Optimal dilutions should be determined by each laboratory for each application.



Human blood-derived lymphocytes were stained with anti-CD48 (R&D Systems, Cat. # AF3644, filled histogram) or control antibody (R&D Systems, Cat. # AB-108-C, open histogram), followed by PE-conjugated anti-goat antibody (R&D Systems Cat # F0107).

FOR RESEARCH USE ONLY. NOT FOR USE IN HUMANS.

R&D Systems, Inc.
1-800-343-7475

2/22/07