

DESCRIPTION

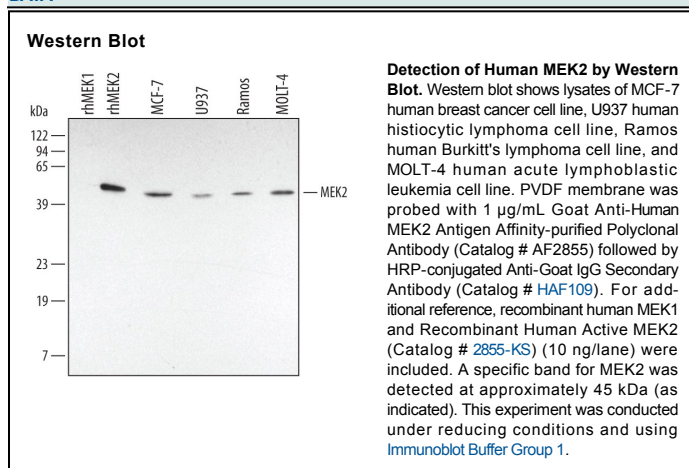
Species Reactivity	Human
Specificity	Detects human MEK2 in Western blots.
Source	Polyclonal Goat IgG
Purification	Antigen Affinity-purified
Immunogen	<i>E. coli</i> -derived recombinant human MEK2 Met1-VaI400 Accession # P36507
Formulation	Lyophilized from a 0.2 µm filtered solution in PBS with Trehalose. See Certificate of Analysis for details. *Small pack size (-SP) is supplied as a 0.2 µm filtered solution in PBS.

APPLICATIONS

Please Note: Optimal dilutions should be determined by each laboratory for each application. *General Protocols* are available in the *Technical Information* section on our website.

	Recommended Concentration	Sample
Western Blot	1 µg/mL	See Below

DATA



PREPARATION AND STORAGE

Reconstitution	Reconstitute at 0.2 mg/mL in sterile PBS.
Shipping	The product is shipped at ambient temperature. Upon receipt, store it immediately at the temperature recommended below. *Small pack size (-SP) is shipped with polar packs. Upon receipt, store it immediately at -20 to -70 °C
Stability & Storage	Use a manual defrost freezer and avoid repeated freeze-thaw cycles. <ul style="list-style-type: none"> ● 12 months from date of receipt, -20 to -70 °C as supplied. ● 1 month, 2 to 8 °C under sterile conditions after reconstitution. ● 6 months, -20 to -70 °C under sterile conditions after reconstitution.

BACKGROUND

Mitogen-activated protein kinase kinase 2 (MAP2K2), also known as MEK2 and MKK2, belongs to the STE grouping of kinases. Both MEK2 and the related MEK1 are dual-specificity kinases, phosphorylating and activating the mitogen-activated protein kinases ERK1 and ERK2 at T and Y positions within the phosphoacceptor sequence T-E-Y. Activation of MEK2 by Raf occurs through phosphorylation at S222 and S226.