

DESCRIPTION

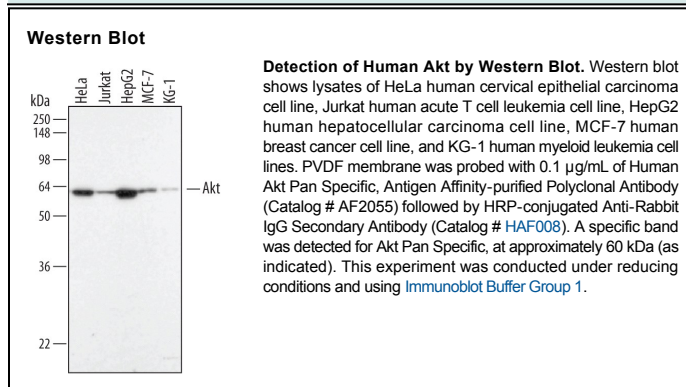
Species Reactivity	Human
Specificity	Detects human Akt1, Akt2, and Akt3 in Western blots.
Source	Polyclonal Rabbit IgG
Purification	Antigen Affinity-purified
Immunogen	Akt synthetic peptide IRCLQWTTVIERTFHV Accession # P31749
Formulation	Lyophilized from a 0.2 µm filtered solution in PBS with Trehalose. See Certificate of Analysis for details. *Small pack size (-SP) is supplied as a 0.2 µm filtered solution in PBS.

APPLICATIONS

Please Note: Optimal dilutions should be determined by each laboratory for each application. *General Protocols* are available in the *Technical Information* section on our website.

	Recommended Concentration	Sample
Western Blot	0.1 µg/mL	See Below

DATA



PREPARATION AND STORAGE

Reconstitution	Reconstitute at 0.2 mg/mL in sterile PBS.
Shipping	The product is shipped at ambient temperature. Upon receipt, store it immediately at the temperature recommended below. *Small pack size (-SP) is shipped with polar packs. Upon receipt, store it immediately at -20 to -70 °C
Stability & Storage	Use a manual defrost freezer and avoid repeated freeze-thaw cycles. <ul style="list-style-type: none"> • 12 months from date of receipt, -20 to -70 °C as supplied. • 1 month, 2 to 8 °C under sterile conditions after reconstitution. • 6 months, -20 to -70 °C under sterile conditions after reconstitution.

BACKGROUND

Rabbit antibodies were raised against a synthetic peptide corresponding to amino acids 75-90 of human v-akt murine thymoma viral oncogene homolog 1 (Akt1), also known as protein kinase B alpha (PKB α) and RAC-alpha serine/threonine kinase (RAC-PK- α). In addition, this peptide sequence is identical to amino acids 75-90 of human Akt2 (PKB β , RAC-PK- β), and amino acids 74-89 of human Akt3 (PKB γ , RAC-PK- γ).