

#### DESCRIPTION

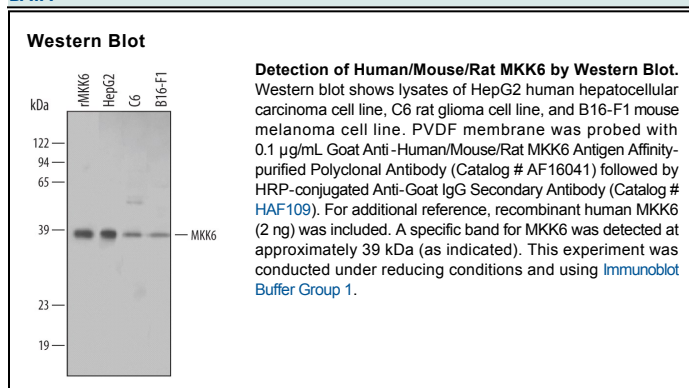
<b>Species Reactivity</b>	Human/Mouse/Rat
<b>Specificity</b>	Detects human, mouse, and rat MKK6.
<b>Source</b>	Polyclonal Goat IgG
<b>Purification</b>	Antigen Affinity-purified
<b>Immunogen</b>	<i>E. coli</i> -derived recombinant human MKK6 Ser2-Asp334 Accession # P52564
<b>Formulation</b>	Lyophilized from a 0.2 µm filtered solution in PBS with Trehalose. See Certificate of Analysis for details. *Small pack size (-SP) is supplied as a 0.2 µm filtered solution in PBS.

#### APPLICATIONS

**Please Note:** Optimal dilutions should be determined by each laboratory for each application. *General Protocols* are available in the *Technical Information* section on our website.

	Recommended Concentration	Sample
<b>Western Blot</b>	0.1 µg/mL	See Below

#### DATA



#### PREPARATION AND STORAGE

<b>Reconstitution</b>	Reconstitute at 0.2 mg/mL in sterile PBS.
<b>Shipping</b>	The product is shipped at ambient temperature. Upon receipt, store it immediately at the temperature recommended below. *Small pack size (-SP) is shipped with polar packs. Upon receipt, store it immediately at -20 to -70 °C
<b>Stability &amp; Storage</b>	<b>Use a manual defrost freezer and avoid repeated freeze-thaw cycles.</b> <ul style="list-style-type: none"> <li>• 12 months from date of receipt, -20 to -70 °C as supplied.</li> <li>• 1 month, 2 to 8 °C under sterile conditions after reconstitution.</li> <li>• 6 months, -20 to -70 °C under sterile conditions after reconstitution.</li> </ul>

#### BACKGROUND

Mitogen-activated protein kinase kinase 6 (MKK6), also known as MEK6, and the closely related MKK3 are activated by pro-inflammatory cytokines and environmental stresses (1, 2). Both MKK3 and MKK6 are dual specificity protein kinases, phosphorylating and activating the p38 MAP kinases at Thr and Tyr positions within the phosphoacceptor sequence Thr-Gly-Tyr (3). Activation of MKK6 occurs through phosphorylation at Ser207 and Thr211 (4) by several upstream MAPK kinase kinases, including ASK1 and TAK1 (5, 6). Purification of *E. coli*-expressed wild-type active MKK6 capable of p38α phosphorylation has been previously noted (7).

#### References:

1. Goedert, M. *et al.* (1997) EMBO J. **16**:3563.
2. Moriguchi, T. *et al.* (1996) J. Biol. Chem. **271**:26981.
3. Raingeaud, J. *et al.* (1995) J. Biol. Chem. **270**:7420.
4. Han, J. *et al.* (1996) J. Biol. Chem. **271**:2886.
5. Ichijo, H. *et al.* (1997) Science **275**:90.
6. Moriguchi, T. *et al.* (1996) J. Biol. Chem. **271**:13675.
7. Keesler, G. *et al.* (1998) Protein Expr. Purif. **14**:221.

#### PRODUCT SPECIFIC NOTICES

The purchase of this product conveys to the buyer the limited, non-exclusive, non-transferable right (without the right to resell, repackage, or further sublicense) to use these reagents for research purposes only. No other license is granted to the buyer whether expressly, by implication, by estoppel or otherwise. In particular, the purchase of this product does not include nor carry any right or license to use, develop, or otherwise exploit this product commercially, which includes without limitation, provision of services to a third party, generation of commercial databases, clinical diagnostics or therapeutics, or drug development. This product is sold pursuant to a license from the University of Massachusetts, and the University of Massachusetts reserves all other rights to use these reagents. For information on purchasing a license for uses other than research, please contact the University of Massachusetts, Office of Technology Management, 333 South Street, Suite 400, Shrewsbury, Massachusetts, 01545.