

## DESCRIPTION

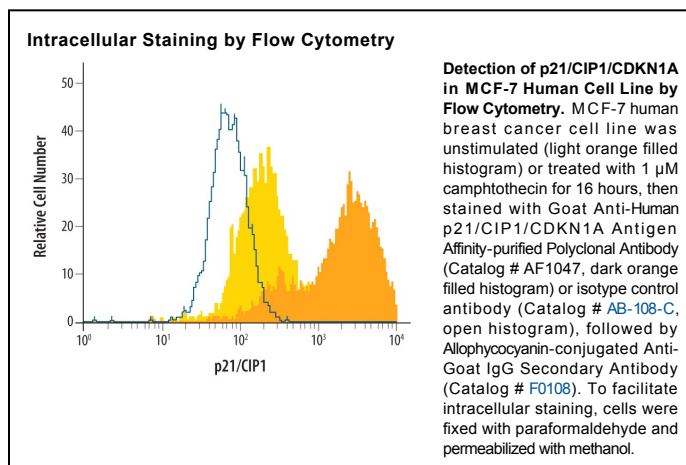
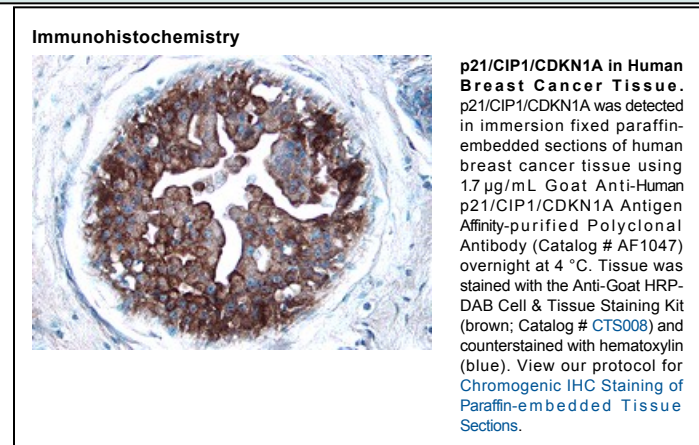
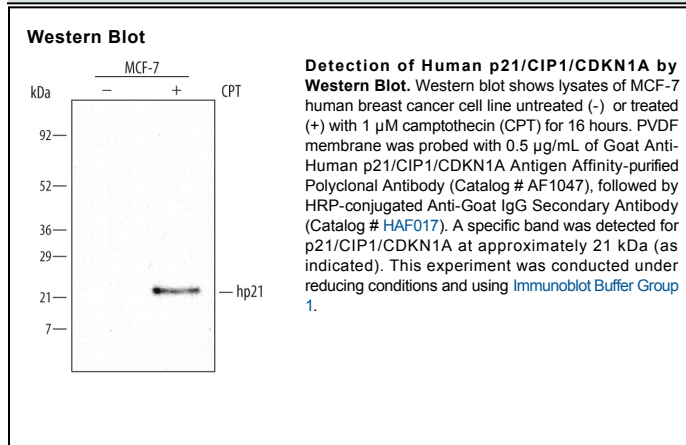
<b>Species Reactivity</b>	Human
<b>Specificity</b>	Detects human p21 in Western blots.
<b>Source</b>	Polyclonal Goat IgG
<b>Purification</b>	Antigen Affinity-purified
<b>Immunogen</b>	<i>E. coli</i> -derived recombinant human p21 Ser2-Pro164 Accession # P38936
<b>Formulation</b>	Lyophilized from a 0.2 µm filtered solution in PBS with Trehalose. See Certificate of Analysis for details. *Small pack size (-SP) is supplied as a 0.2 µm filtered solution in PBS.

## APPLICATIONS

**Please Note:** Optimal dilutions should be determined by each laboratory for each application. *General Protocols* are available in the *Technical Information* section on our website.

	Recommended Concentration	Sample
<b>Western Blot</b>	0.5 µg/mL	See Below
<b>Immunohistochemistry</b>	5-15 µg/mL	See Below
<b>Immunoprecipitation</b>	1-2 µg/500 µg cell lysate	MCF-7 human breast cancer cell line, <a href="#">see our available Western blot detection antibodies</a>
<b>Intracellular Staining by Flow Cytometry</b>	2.5 µg/10 <sup>6</sup> cells	See Below

## DATA



---

## PREPARATION AND STORAGE

**Reconstitution** Reconstitute at 0.2 mg/mL in sterile PBS.

**Shipping** The product is shipped at ambient temperature. Upon receipt, store it immediately at the temperature recommended below.  
\*Small pack size (-SP) is shipped with polar packs. Upon receipt, store it immediately at -20 to -70 °C

**Stability & Storage** Use a manual defrost freezer and avoid repeated freeze-thaw cycles.

- 12 months from date of receipt, -20 to -70 °C as supplied.
  - 1 month, 2 to 8 °C under sterile conditions after reconstitution.
  - 6 months, -20 to -70 °C under sterile conditions after reconstitution.
-