

**DESCRIPTION**

<b>Species Reactivity</b>	Human
<b>Specificity</b>	Detects human MMP-9 in Western blots. In Western blots, less than 1% cross-reactivity with recombinant human MMP-1, -2, -3, -7, -8, -10, -12 and -13 is observed.
<b>Source</b>	Polyclonal Goat IgG
<b>Purification</b>	Protein A or G purified
<b>Immunogen</b>	Chinese hamster ovary cell line CHO-derived recombinant human MMP-9
<b>Formulation</b>	Lyophilized from a 0.2 µm filtered solution in PBS with Trehalose. See Certificate of Analysis for details.

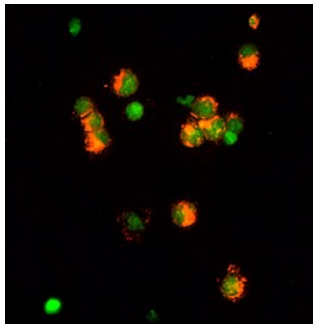
**APPLICATIONS**

**Please Note:** Optimal dilutions should be determined by each laboratory for each application. *General Protocols* are available in the *Technical Information* section on our website.

	<b>Recommended Concentration</b>	<b>Sample</b>
<b>Western Blot</b>	1 µg/mL	Recombinant Human MMP-9 Western Blot Standard (Catalog # <a href="#">WBC018</a> )
<b>Immunocytochemistry</b>	5-15 µg/mL	See Below
<b>Immunohistochemistry</b>	5-15 µg/mL	See Below
<b>Immunoprecipitation</b>	25 µg/mL	Conditioned cell culture medium spiked with Recombinant Human MMP-9 (Catalog # <a href="#">911-MP</a> ), see our available <a href="#">Western blot detection antibodies</a>

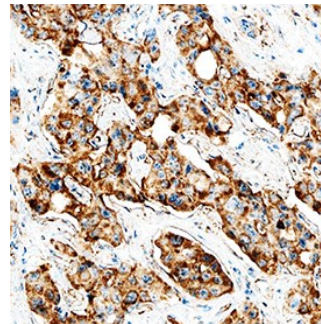
**DATA**

**Immunocytochemistry**



**MMP-9 in MMP-9 transfected NS0 Mouse Cell Line.** MMP-9 was detected in immersion fixed MMP-9 transfected NS0 mouse myeloma cell line using Goat Anti-Human MMP-9 Polyclonal Antibody (Catalog # AB911) at 5 µg/mL for 3 hours at room temperature. Cells were stained (red) and counterstained (green). Specific labeling was localized to the cytoplasm. View our protocol for [Fluorescent ICC Staining of Cells on Coverslips](#).

**Immunohistochemistry**



**MMP-9 in Human Liver Cancer Tissue.** MMP-9 was detected in immersion fixed paraffin-embedded sections of human liver cancer tissue using Goat Anti-Human MMP-9 Polyclonal Antibody (Catalog # AB911) at 10 µg/mL overnight at 4 °C. Tissue was stained using the Anti-Goat HRP-DAB Cell & Tissue Staining Kit (brown; Catalog # [CTS008](#)) and counterstained with hematoxylin (blue). Specific staining was localized to cytoplasm in cancer cells. View our protocol for [Chromogenic IHC Staining of Paraffin-embedded Tissue Sections](#).

**PREPARATION AND STORAGE**

<b>Reconstitution</b>	Reconstitute at 1 mg/mL in sterile PBS.
<b>Shipping</b>	The product is shipped at ambient temperature. Upon receipt, store it immediately at the temperature recommended below.
<b>Stability &amp; Storage</b>	<p><b>Use a manual defrost freezer and avoid repeated freeze-thaw cycles.</b></p> <ul style="list-style-type: none"> <li>● 12 months from date of receipt, -20 to -70 °C as supplied.</li> <li>● 1 month, 2 to 8 °C under sterile conditions after reconstitution.</li> <li>● 6 months, -20 to -70 °C under sterile conditions after reconstitution.</li> </ul>