

Sheep Hemagglutination Kit - KPA-3913

Code: KPA-3913

Size: 1 Kit

Product Description: Sheep Hemagglutination Kit - KPA-3913

PhysicalState:

Host	Sheep
Storage Condition	Store sheep washed pooled red blood cells at 4° C prior to opening. Be advised that blood is a perishable product and exact shelf may depend on application.
Synonyms	Sheep hemagglutination (HA) assay, Sheep HA kit, Sheep haemagglutination kit, Hemagglutination kit, Sheep hemagglutinins test kit, Lectins hemagglutination assay kit, Virus hemagglutination assay kit, Antibody titer assay kit, Hemagglutination inhibition assay, Haemagglutination-inhibition (HAI) assay kit, HAI assay kit, Sheep HAI kit
Application Note	<p>10X Phosphate Buffered Saline (PBS) is a concentrated stock solution and should be diluted appropriately with distilled, deionized water or equivalent to its final working concentration which is 1X for this kit.</p> <p>SHEEP RED BLOOD CELLS (RBC) 10% Washed Pooled Cells - R405-0005 should be diluted in 1X PBS to 0.05% concentration.</p> <p>Anti-SHEEP Red Blood Cell (RBC) (RABBIT) Antibody - 213-4139-0002 binds and thus hemagglutinates Sheep RBCs when used at a dilution range of 1:25-1:50. An antibody mediated hemagglutination control is useful as a qualitative index for the integrity of the RBCs in the assay. Further serial dilutions up to 1:400 can be included in the assay if an independent or antibody-based control is required in the assay.</p>
Background	<p>Hemagglutination method is used for titer evaluation of viruses (e.g. Influenza, COVID-19 etc.), bacteria (e.g. Staphylococci, Shigella etc.), proteins (e.g. certain glycoproteins such as Lectins) and other agents which have the ability to attach to red blood cells (RBC)'s surface molecules.</p> <p>For example, the influenza viruses agglutinate RBCs through their interaction with sialic acid receptors on the host cells. At a molecular level, viral hemagglutinins bind to sialic acid linked to galactose residues through alpha 2.3 or 2.6 linkage, which varies from species to species.</p> <p>Once a hemagglutinin agglutinates the RBCs, each of the agglutinating molecule attaches to RBCs to form a lattice-structure or a meshwork. This prevents RBCs from settling down from suspension in a round bottom 96 well plate. Visually, a hemagglutinated sample will generate a uniform red colored suspension while a sample lacking hemagglutination will lead to settling down of RBCs to the bottom of wells to form button or dot shape. In viral hemagglutination assay, a virus dilution (e.g. 2-fold from 1:4 to 1:4096) will be applied to an RBC dilution (e.g. 0.05% -0.1%) for 30 minutes to an hour at room temperature or 4° C. Thereafter, lattice formation is observed and the titer of a hemagglutination assay can be determined by the last viable "lattice" structure found. If diluted further, the amount of Virus particles will be less than the RBCs and thus not be able to agglutinate them.</p> <p>A Hemagglutination-inhibition (HAI) assay will involve titration of the viral hemagglutination with an anti-viral antibody (often from serum of human or animal infected with that virus) for inhibition of hemagglutination (i.e. neutralization of virus). HAI is one of the most commonly used methods to quantify immunity from influenza and other respiratory viral disease vaccines and is considered the gold standard as a correlate of vaccination mediated protection.</p>
Purity And Specificity	Anti-SHEEP Red Blood Cell (RBC) (RABBIT) Antibody - 213-4139-0002 is an IgG fraction antibody purified from polyspecific antiserum by a multi-step process which includes delipidation, salt fractionation and ion exchange chromatography followed by extensive dialysis against the buffer stated above. SHEEP RED BLOOD CELLS (RBC) 10% Washed Pooled Cells - R405-0005 are supplied as a 10 percent suspension in phosphate buffered saline (PBS). 10X Phosphate Buffered Saline (PBS) consists of 0.2 M Potassium Phosphate, 1.5 M Sodium Chloride, pH 7.2 prepared in highly polished pharmaceutical grade water (WFI).
Assay Dilutions	Hemagglutination: 1:25-1:50
Other Assays	Hemagglutination: 1:25-1:50
Expiration	This product MAY be stable for up to two (2) weeks if properly stored and handled.
Sex	Mixed
Sterilization	This product was aseptically drawn and processed using sterile equipment and sterile techniques. The product was tested on trypticase soy agar for 24 hours, 48 hours and 72 hours and was found to be negative for bacteria.
Related Products	
MB-010-0100	Molecular Biology Grade UltraPure Water (10 X 100 ml) - MB-010-0100
MB-011	10X PBS pH 7.2 with Azide (0.2 M Potassium Phosphate 1.5 M Sodium Chloride 0.1% (w/v) Sodium Azide) - MB-011
R111-0050	SHEEP BLOOD Defibrinated - R111-0050
R311-0050	SHEEP BLOOD in Alsevers - R311-0050

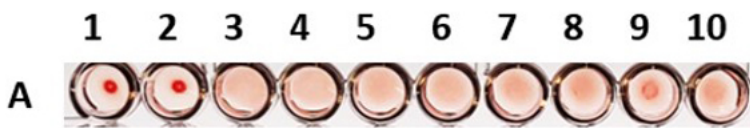
Related Links

KPA-3913 Sheep Hemagglutination Protocol

Images

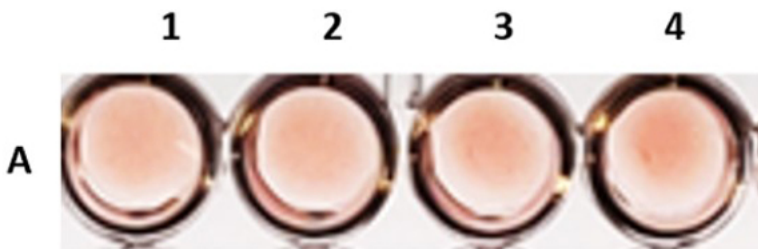
1

Sheep Hemagglutination Assay. Row A: Sheep Red Blood Cells 10% Washed Pooled Cells (p/n R405-0005) incubated in duplicate with control or antibody listed. Wells: (1-2) PBS only, (3-4) 0.8mg/mL Anti-RBC antibody (1:12.5 dilution), (5-6) 0.4mg/mL Anti-Sheep RBC antibody (1:25 dilution), (7-8) 0.2mg/mL Anti-Sheep RBC antibody (1:50 dilution), (9-10) 0.1mg/mL Anti-Sheep RBC antibody (1:100 dilution). Primary Antibody: Anti-Sheep Red Blood Cells (RABBIT) Antibody (p/n 213-4139-0002 Lot# 40411) buffered with 1X PBS for 90 minutes at RT.



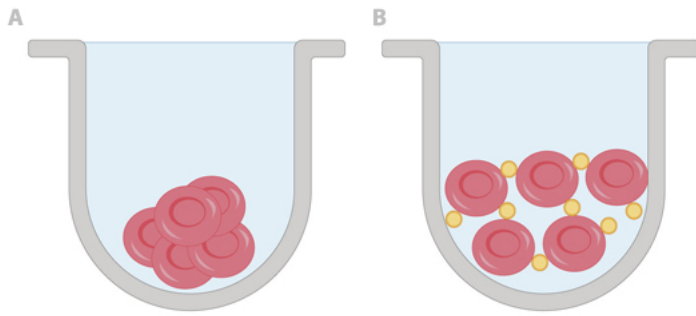
2

Sheep Hemagglutination Assay. Row A: Sheep Red Blood Cells 10% Washed Pooled Cells (p/n R405-0005) incubated in duplicate antibody listed. Wells: (1-2) 0.4mg/mL Anti-Sheep RBC antibody (1:25 dilution), (3-4) 0.2mg/mL Anti-Sheep RBC antibody (1:50 dilution). Primary Antibody: Anti-Sheep Red Blood Cells (RABBIT) Antibody (p/n 213-4139-0002 Lot# 40411) buffered with 1X PBS for 90 minutes at RT.



3

(A) Red blood cells without agglutinating substances. The absence of these agglutinating substances will allow the red blood cells to pellet and form a dense button-like shape at the bottom of the well. (B) Red blood cells in the presence of agglutinating substances. In the presence of glycosylated proteins, lectins, or agglutinating viruses, the blood cells will clump around the agglutinating presence into a diffuse, suspended state.



Disclaimer

This product is for research use only and is not intended for therapeutic or diagnostic applications. Please contact a technical service representative for more information. All products of animal origin manufactured by Rockland Immunochemicals are derived from starting materials of North American origin. Collection was performed in United States Department of Agriculture (USDA) inspected facilities and all materials have been inspected and certified to be free of disease and suitable for exportation. All properties listed are typical characteristics and are not specifications. All suggestions and data are offered in good faith but without guarantee as conditions and methods of use of our products are beyond our control. All claims must be made within 30 days following the date of delivery. The prospective user must determine the suitability of our materials before adopting them on a commercial scale. Suggested uses of our products are not recommendations to use our products in violation of any patent or as a license under any patent of Rockland Immunochemicals, Inc. If you require a commercial license to use this material and do not have one, then return this material, unopened to: Rockland Inc., P.O. BOX 5199, Limerick, Pennsylvania, USA.

Reviews

Submit a product review with an image and you will receive a promo code for the amount of the product you reviewed. Simply log in or register for an account, navigate to the product page, click reviews, and submit your feedback!