

INSL 3 C-Peptide (Human) - Antibody for Immunohistochemistry

Catalog#	Standard size	Price	Order
H-035-48	100 μ l		<input type="button" value="ORDER"/>

Product description

More information

[Relaxin & Relaxin-Related Peptides](#)

[C-Peptide from Proinsulin](#)

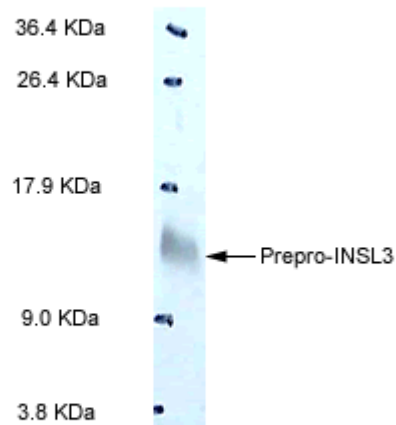
[Insulin-like 3 Peptide \(INSL 3\)](#)

[C-Peptide from Prepro-Insulin-like Peptide](#)

[Relaxin Evolution](#)

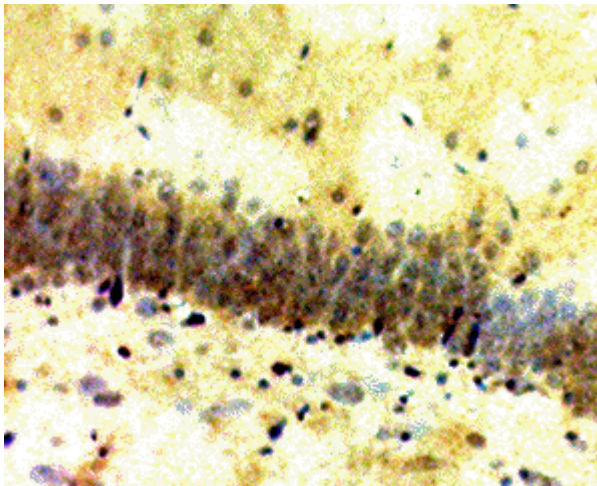
Image

Western blot analysis Prepro-INSL3 in rat testis tissue

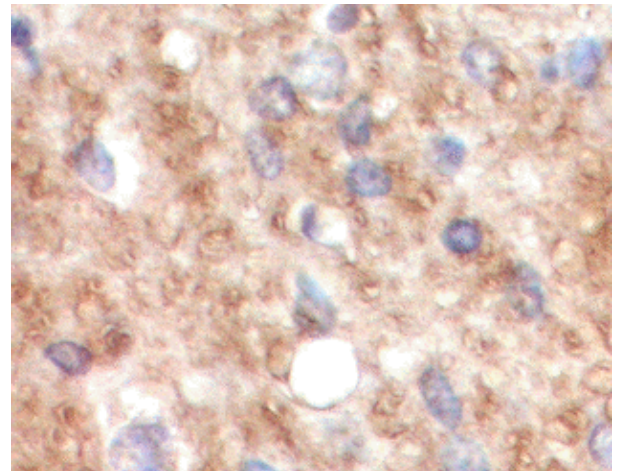


Rat testis tissue homogenate was run on 15% Tricine-PAGE gel

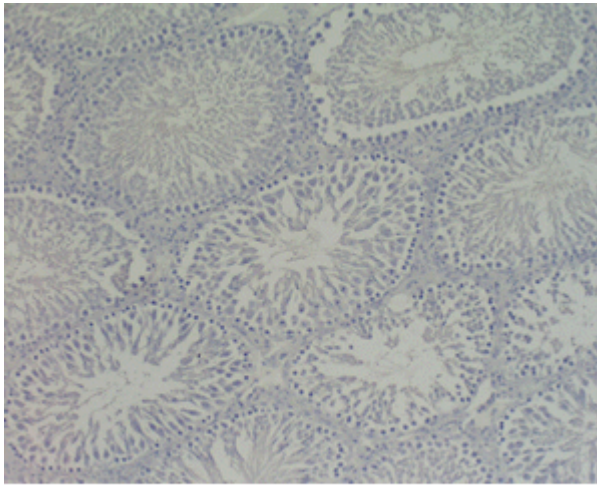
Primary Antibody: Rabbit Anti-INSL3, C Peptide (H) Antiserum (catalog No.: H-035-48)



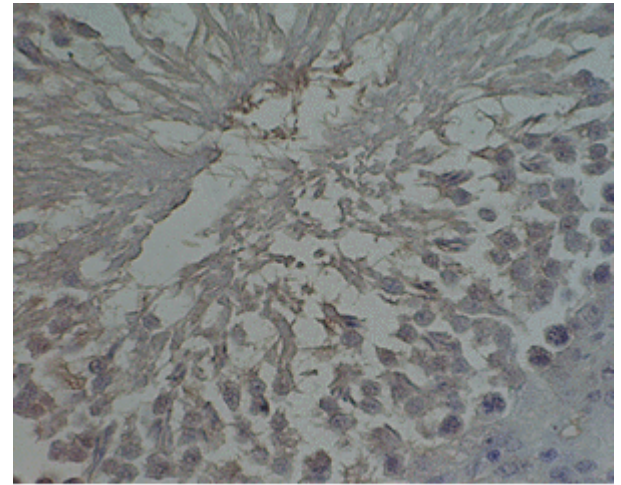
Rat brain tissue was stained by Anti-INSL-3 C Peptide (Human) (Catalog No.: H-035-48). (1:200)



Rat brain tissue was stained by Anti-INSL-3 C Peptide (Human) (Catalog No.: H-035-48).



Rat testis tissue was stained by Pre-Immuno Serum



Rat testis tissue was stained by anti-INSL-3 C-Peptide (Human) (Catalog No.: H-035-48) (1:50)

Protocol for Immunohistochemistry:

Tissue Sample	Rat brain and testis tissue
Fixative	10% Formalin
Embedding	Paraffin
Negative control	No primary antibody
Pretreatment	Target retrieval 25 min (Steam)
Blocking	2% Normal Goat Serum
Primary Antibody	Rabbit Anti-Insulin-like 3 C Peptide/Insulin-like 3 Prepro (58-105) (Human) Serum (Catalog No: H-035-48)
Optimal Dilution	1:50-200 (1hour at RT)
Secondary Antibody	Goat anti-Rabbit IgG, Biotinylated (1:400, 30 min)
Amplification	ABC (Vector) (1:400, 30 min)
Detection system	HRP
Substrate	DAB (Sigma), 3 min
Counterstained	Hematoxylin, 30 Sec

Catalog # H-035-48

Standard Size 100 µl

Sequence Pro - Ala - Ala - Gly - Gly - Asp - Arg - Glu - Leu - Leu - Gln - Trp - Leu - Glu - Arg - Arg - His - Leu - Leu - His - Gly - Leu - Val - Ala - Asp - Ser - Asn - Leu - Thr - Leu - Gly - Pro - Gly - Leu - Gln - Pro - Leu - Pro - Gln - Thr - Ser - His - His - His - Arg - His - His - Arg

Species Human

Host Rabbit

Reconstitution For best and reproducible results, reconstitute with 50µl of distilled water for the equivalent of undiluted antiserum, immediately before use. Reconstituted antibody can also be aliquotted (5~10µl) and stored frozen at -20°C to -70°C in a manual defrost freezer. Avoid repeated freeze-thaw cycle.

Storage Condition For optimal results, use the antibody as soon as possible after reconstitution. Store in lyophilized form unless needed and reconstitute immediately before use. Once reconstituted, the antibody should be stable for a few days at -4°C. For storage up to a few months, prepare small aliquots after reconstitution and freeze at -20°C or -80°C. Repeated freeze thaw cycles should be strictly avoided.

Content This vial contains 50µl of Rabbit Anti-Insulin-like 3 C Peptide/Insulin-like 3 Prepro (58-105) (Human) Serum in the lyophilized form.