

GLP-1 (7-37) (Human, Rat, Mouse, Porcine, Bovine, Canine, Ovine) - Antibody for Immunohistochemistry

Catalog#	Standard size	Price	Order
H-028-13	50 µl	\$150.00	ORDER

Product description

More information

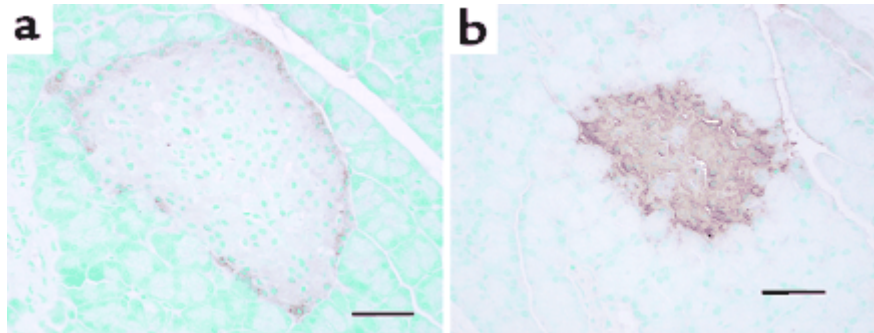
References

GLP-1 & GLP-2

Normal Plasma Peptide/Protein Levels

Neuron Function Modulation

Image



Rat pancreatic and intestinal sections with an antiserum for human GLP-17–37 (Phoenix Pharmaceuticals, Mountain View, California, USA) at a concentration of 1/500. The second antibody was a biotinylated goat anti-rabbit immunoglobulin, and the signal was detected using the Vectastain ABC kit (Vector Laboratories, Burlingame, California, USA) with DAB as a substrate. The section was counterstained with methyl green. [Nie et al. J Clin Invest. 2000 Apr; 105\(7\):955-65.](#)

Protocol for Immunohistochemistry:

Tissue Sample	Rat Pancreatic and intestinal tissue
Fixative	10% Formalin
Embedding	Paraffin
Negative control	Pre-immuno serum
Pretreatment	Intact
Blocking	2% Normal Goat Serum
Primary Antibody	Rabbit Anti-GLP-1 (7-37) (Human, Rat, Mouse, Porcine) Serum (Catalog No.: H-028-13)
Optimal Dilution	1:500 (1hour at RT)
Secondary Antibody	Goat anti-Rabbit IgG, Biotinylated (1:400, 30 min)
Amplification	ABC (Vector) (1:400, 30 min)
Detection system	HRP
Substrate	DAB (Sigma), 3 min
Counterstained	with methyl green

Catalog #	H-028-13
Standard Size	50 µl
Sequence	His - Ala - Glu - Gly - Thr - Phe - Thr - Ser - Asp - Val - Ser - Ser - Tyr - Leu - Glu - Gly - Gln - Ala - Ala - Lys - Glu - Phe - Ile - Ala - Trp - Leu - Val - Lys - Gly - Arg - Gly
Species	Human, Rat, Mouse, Porcine, Bovine, Ovine, Canine
Host	Rabbit
Reconstitution	For best and reproducible results, reconstitute with 50µl of distilled water for the equivalent of undiluted antiserum, immediately before use. Do not refreeze any unused portions.
Storage Condition	For optimal results, use the antibody as soon as possible after reconstitution. Store in lyophilized form unless needed and reconstitute immediately before use. Once reconstituted, the antibody should be stable for a few days at -4°C. For storage up to a few months, prepare small aliquots after reconstitution and freeze at -20°C or -80°C. Repeated freeze thaw cycles should be strictly avoided.
Content	This vial contains 50µl of Rabbit Anti-Glucagon-Like Peptide-1 (7-37) (Human, Rat, Mouse) Serum in the lyophilized form.

Recommended Dilution Factor Indirect ELISA: 1: 3200
Immunohistochemistry: 1~500

Cross Reactivity	Peptide	% Crossreactivity
	GLP-1 (7-37) (Human)	100
	GLP-1 (Human)	100
	GLP-1 (7-36) (Human)	0
	GLP-2 (Human)	0
	Glucagon (Human)	0
	Insulin (Human)	0
	Secretin (Porcine)	0
	GIP (Human)	0
	VIP (Human, Porcine, Rat)	0
	GH-RF (Human)	0