

# GLP-1 (7-36)-Amide (Human, Rat, Mouse, Porcine, Bovine, Canine, Ovine) - Antibody for Immunohistochemistry

Catalog#	Standard size	Price	Order
H-028-11	50 µl	\$325.00	<input type="button" value="ORDER"/>

[Product description](#)

[More information](#)

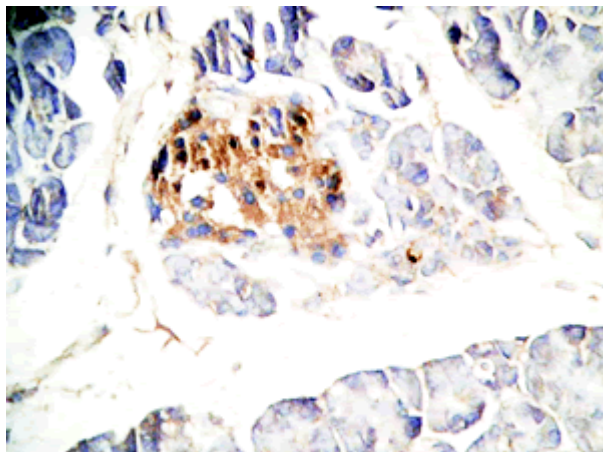
[References](#)

GLP-1 & GLP-2

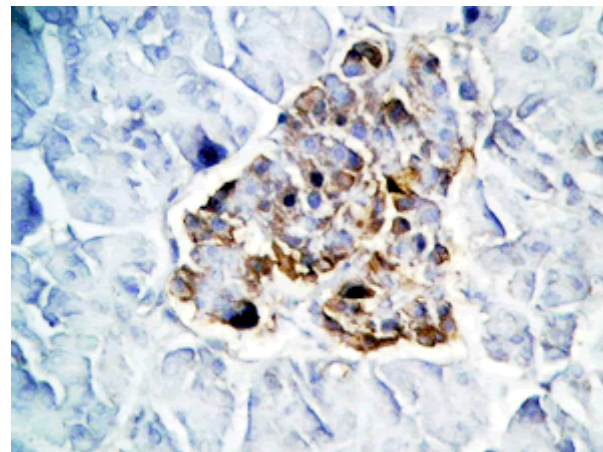
Normal Plasma Peptide/Protein Levels

Neuron Function Modulation

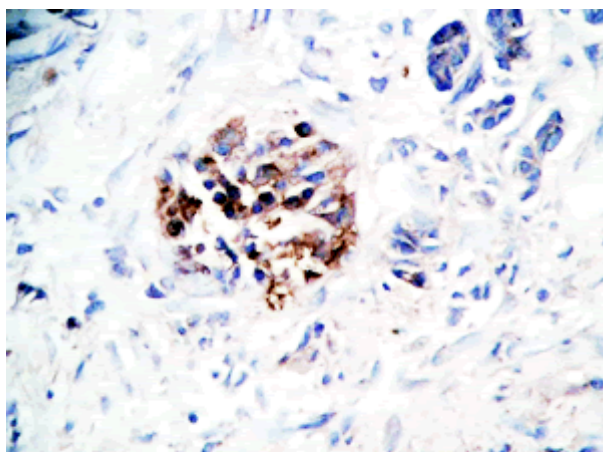
Image



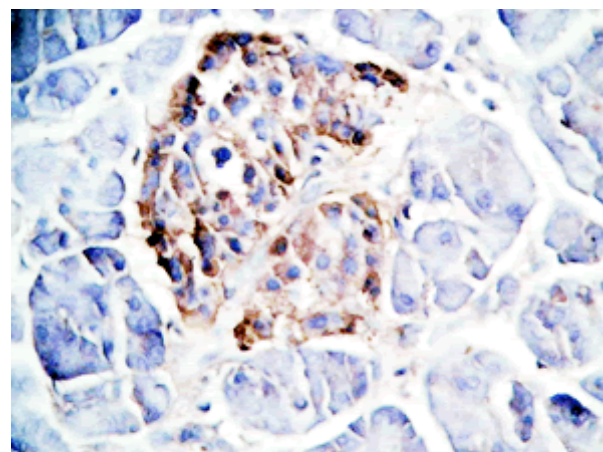
Human pancreas cancer tissue was stained by rabbit anti-GLP-1 (7-36)-NH2 Antibody (Cat. No.: H-028-11)



Human pancreas cancer tissue was stained by rabbit anti-GLP-1 (7-36)-NH2 Antibody (Cat. No.: H-028-11)



Human pancreas cancer tissue was stained by rabbit anti-GLP-1 (7-36)-NH2 Antibody (Cat. No.: H-028-11)



Human pancreas cancer tissue was stained by rabbit anti-GLP-1 (7-36)-NH2 Antibody (Cat. No.: H-028-11)

## Protocol for Immunohistochemistry

Tissue Sample	Human pancreas tissues
Fixative	10% Formalin
Embedding	Paraffin
Negative control	No primary antibody
Pretreatment	N/A
Blocking	3% H <sub>2</sub> O <sub>2</sub> , 2% Normal Goat Serum
Primary Antibody	Rabbit Anti-GLP-1 (7-36)-NH2 Antiserum (Catalog No.: H-028-11)
Optimal Dilution	1:500, 1 hour at RT
Secondary Antibody	Goat anti-Rabbit IgG, Biotinylated (1:400, 30 min)
Amplification	Streptavidin-HRP (Vector), 1:400, 30 min
Detection system	HRP
Substrate	DAB (Sigma), 3 min
Counterstained	Hematoxylin, 30 Sec

<b>Catalog #</b>	H-028-11	
<b>Family</b>	GLP-1	
<b>Standard Size</b>	50 µl	
<b>Sequence</b>	His - Ala - Glu - Gly - Thr - Phe - Thr - Ser - Asp - Val - Ser - Ser - Tyr - Leu - Glu - Gly - Gln - Ala - Ala - Lys - Glu - Phe - Ile - Ala - Trp - Leu - Val - Lys - Gly - Arg - NH <sub>2</sub>	
<b>Species</b>	Human, Rat, Porcine, Mouse, Bovine, Ovine, Canine	
<b>Host</b>	Rabbit	
<b>Immunogen</b>	Glucagon-Like-Peptide-1 (7-36)-Amide	
<b>Storage Condition</b>	For optimal results, use the antibody as soon as possible after reconstitution. Store in lyophilized form unless needed and reconstitute immediately before use. Once reconstituted, the antibody should be stable for a few days at -4°C. For storage up to a few months, prepare small aliquots after reconstitution and freeze at -20°C or -80°C. Repeated freeze thaw cycles should be strictly avoided.	
<b>Content</b>	Each vial contains 50µl of rabbit Anti-Glucagon-Like Peptide-1 (7-36) Amide (GLP-1) [Prepro-Glucagon (78-107) Amide] (Human) serum in the lyophilized form. Reconstitute with 50µl of distilled water for the equivalent of undiluted antiserum. For diluted antiserum add additional buffer.	
<b>Cross Reactivity</b>	<b>Peptide</b>	<b>% Crossreactivity</b>
	GLP-1 (7-36) (Human, Rat, Mouse)	100
	GLP-1 (7-37) (Human, Rat, Mouse)	0.4
	GLP-2 (Human)	0
	Glucagon (Human)	0
	Insulin (Human)	0
	Secretin (Porcine)	0
	GIP (Human)	0
	VIP (Human, Porcine, Rat)	0