

# Salusin-beta (Human) - Antibody for Immunohistochemistry

Catalog#	Standard size	Price	Order
H-010-68	100 µl	\$450.00	<a href="#">ORDER</a>

## Product description

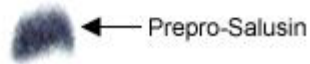
## More information

### Salusin

#### Image

Detection of Prepro-Salusin in rat brain tissue using Phoenix's Anti-Salusin Beta (Human) Antiserum (catalog No.: H-010-68)

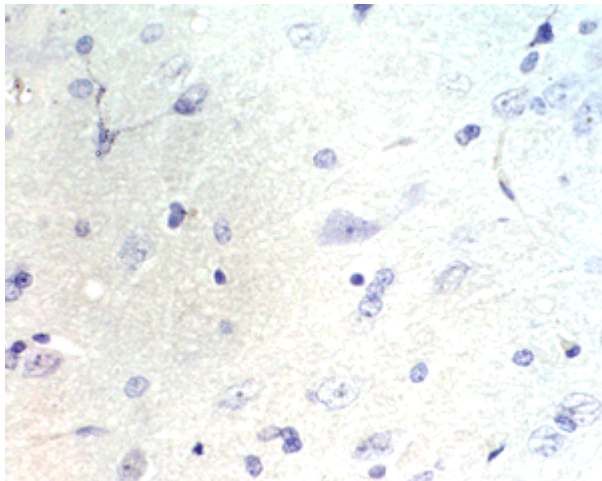
38 KDa



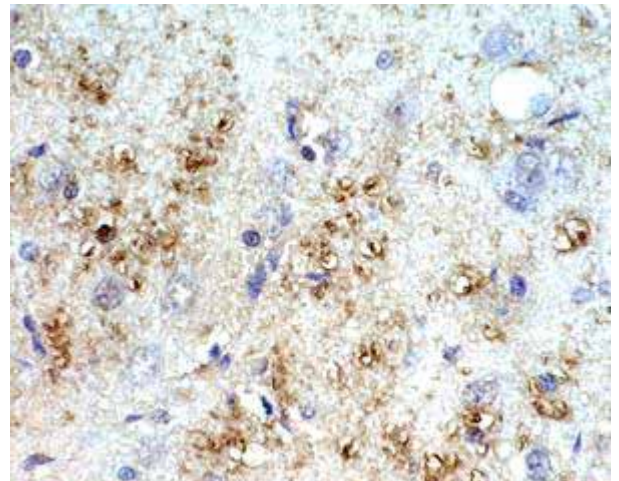
22 KDa

Rat brain tissue homogenate was run on 15% Tricine-PAGE gel

Primary Antibody at 1: 350 dilution



Rat brain tissue was stained by Pre-immunoserum



Rat brain tissue was stained by Anti-Salusin-beta (Human) Antiserum (Catalog No.: H-010-68, Lot No.:PBR027-1)

### Protocol for Immunohistochemistry

Tissue Sample	Rat Brain Tissue
Fixative	10% Formalin
Embedding	Paraffin
Negative control	No primary antibody
Pretreatment	N/A
Blocking	3% H <sub>2</sub> O <sub>2</sub> , 2% Normal Goat Serum
Primary Antibody	Rabbit Anti-Salusin-beta (Human) Serum (Catalog No.:H-010-68)
Optimal Dilution	1:200, 1 hour at RT
Secondary Antibody	Goat anti-Rabbit IgG, Biotinylated (1:400, 30 min)
Amplification	Streptavidin-HRP (Vector), 1:400, 30 min
Detection system	HRP
Substrate	DAB (Sigma), 3 min
Counterstained	Hematoxylin, 30 Sec

Catalog # H-010-68

<b>Standard Size</b>	100 µl
<b>Sequence</b>	Ala - Ile - Phe - Ile - Phe - Ile - Arg - Trp - Leu - Leu - Lys - Leu - Gly - His - His - Gly - Arg - Ala - Pro - Pro - OH
<b>Species</b>	Human
<b>Storage Condition</b>	For optimal results, use the antibody as soon as possible after reconstitution. Store in lyophilized form unless needed and reconstitute immediately before use. Once reconstituted, the antibody should be stable for a few days at -4°C. For storage up to a few months, prepare small aliquots after reconstitution and freeze at -20°C or -80°C. Repeated freeze thaw cycles should be strictly avoided.

Thursday 20 December, 2012

11986408 requests since Wednesday 05 April, 2006

Copyright © 2012 PHOENIX PHARMACEUTICALS, INC.