

Salusin-alpha (Human) - EIA Kit

Catalog#	Standard size	Price	Order
EK-010-67	1 kit	\$420.00	<input type="button" value="ORDER"/>

Product description

More information

Salusin

Protocol [Assay Protocol \(PDF\)](#)

Sample Preparation [Blood collection](#)
[Plasma extraction](#)
[Tissue extraction](#)
[CSF extraction](#)

Catalog # EK-010-67

Standard Size 1 kit

Sensitivity Minimum Detectable Concentration = 0.24ng/ml

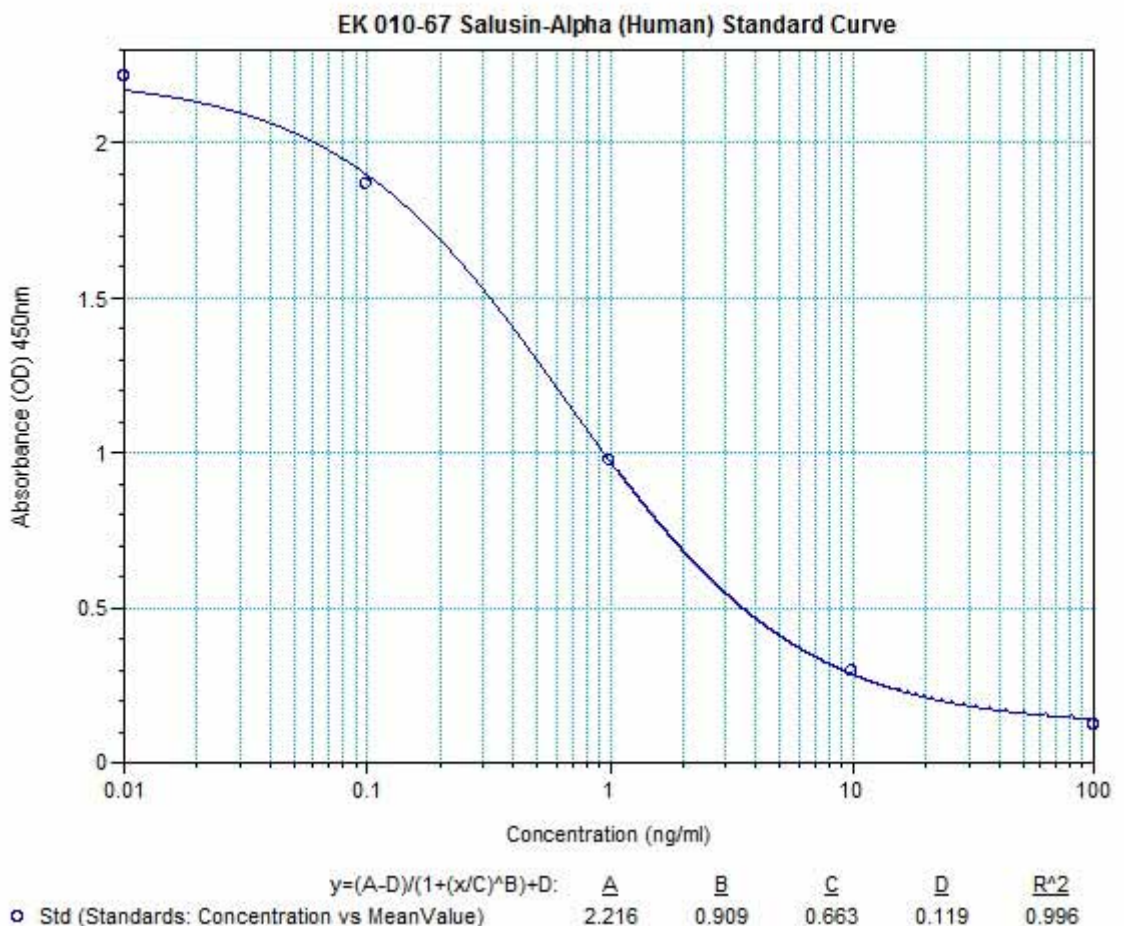
Range 0-100 ng/ml

Linear Range 0.24-4.7 ng/ml

Cross Reactivity	Peptide	% Cross-reactivity
	Salusin-alpha (Human)	100
	Salusin-alpha-Gly29 (Human)	100
	Salusin (50-mer) (Human)	100
	Salusin-beta (Human)	0
	Salusin (40-mer) (Human)	0
	Endothelin-1 (Human, Rat, Mouse, Porcine, Canine, Bovine)	0

Sequence Ser - Tyr - Ser - Met - Glu - His - Phe - Arg - Trp - Gly - Lys - Pro - Val - Gly - Lys - Lys - Arg - Arg - Pro - Val - Lys - Val - Tyr - Pro - Asn - Gly - Ala - Glu - Asp - Glu - Ser - Ala - Glu - Ala - Phe - Pro - Leu - Glu - Phe

Standard Curve Image



Copyright © 2012 PHOENIX PHARMACEUTICALS, INC.