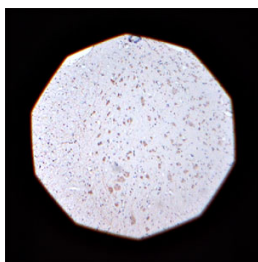


## Rabbit antibody to TRPM8

<b>Code</b>	OST00317W
<b>ID Tag</b>	Rb1185-260909-WS
<b>Unit size</b>	100 µl
<b>Immunogen</b>	A synthetic peptide from the 1 <sup>st</sup> cytoplasmic loop of human TRPM8 conjugated to an immunogenic carrier protein was used as the antigen. The peptide is homologous in rat and mouse.
<b>Conjugate</b>	Unconjugated antibody
<b>Also known</b>	Transient receptor potential cation channel subfamily M member 8, transient receptor potential-p8, Trp-p8, long transient receptor potential channel 6, TRPP8, LTRPC6
<b>Host</b>	NZ white rabbit
<b>Purity</b>	Whole serum
<b>Clonality</b>	Polyclonal
<b>Isotype</b>	Polyclonal, whole serum
<b>Applications</b>	IHC, WB. A dilution of 1: 300 to 1: 2000 is recommended. The optimal dilution should be determined by the end user. Not yet tested in other applications.
<b>Specificity</b>	Specific for TRPM8.
<b>Spcs X-react.</b>	Human, rat, mouse. Other species not yet tested.
<b>Format</b>	Lyophilised
<b>Reconstitution</b>	Reconstitute in 100 µl of sterile water. Centrifuge to remove any insoluble material.
<b>Storage</b>	Maintain the lyophilised/reconstituted antibodies frozen at -20°C for long term storage and refrigerated at 2-8°C for a shorter term. When reconstituting, glycerol (1:1) may be added for an additional stability. Avoid freeze and thaw cycles.
<b>Expiry Date</b>	12 months after reconstitution
<b>Shipping</b>	This item will be shipped to you at ambient temperature in a lyophilised form.
<b>Limitation</b>	For research use only



IHC on rat spinal cord (paraffin section) using Rabbit antibody to TRPM8 (OST00317W) at 1 : 200 dilution incubated overnight at 4C, developed with DAB/Ni and counterstained with hematoxylin.

---

### Related Products

OST00362W Goat antibody to TRPM8