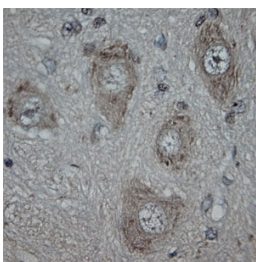


## Rabbit antibody to TRPV1

<b>Code</b>	OST00206W
<b>ID Tag</b>	Rb629-170808-WS
<b>Unit size</b>	100 µl
<b>Immunogen</b>	A synthetic peptide from the 3d cytoplasmic loop of human TRPV1 conjugated to blue carrier protein was used as the antigen. The peptide is homologous in rat and mouse.
<b>Conjugate</b>	Unconjugated antibody
<b>Also known</b>	TrpV1, osm-9-like TRP channel 1, OTRPC1, vanilloid receptor 1, capsaicin receptor, VR1, transient receptor potential cation channel subfamily V member 1
<b>Host</b>	NZ white rabbit
<b>Purity</b>	Whole serum
<b>Clonality</b>	Polyclonal
<b>Isotype</b>	Polyclonal, whole serum
<b>Applications</b>	IHC, WB. A dilution of 1: 300 to 1: 2000 is recommended. The optimal dilution should be determined by the end user. Not yet tested in other applications.
<b>Specificity</b>	Specific for TRPV1.
<b>Spcs X-react.</b>	Human, rat, mouse. Other species not yet tested.
<b>Format</b>	Lyophilised
<b>Reconstitution</b>	Reconstitute in 100 µl of sterile water. Centrifuge to remove any insoluble material.
<b>Storage</b>	Maintain the lyophilised/reconstituted antibodies frozen at -20°C for long term storage and refrigerated at 2-8°C for a shorter term. When reconstituting, glycerol (1:1) may be added for an additional stability. Avoid freeze and thaw cycles.
<b>Expiry Date</b>	12 months after reconstitution
<b>Shipping</b>	This item will be shipped to you at ambient temperature in a lyophilised form.
<b>Limitation</b>	For research use only



IHC on rat spinal cord (paraffin section) using Rabbit antibody to TRPV1 (OST00206W) at 1: 300 dilution incubated overnight at 4C.

---

### Related Products

OST00368G Rabbit antibody to TRPV1