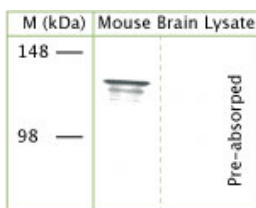


Rabbit antibody to TRPA1 (1050-1120)

Code	OST00061W
ID Tag	Rb432-150608-WS
Unit size	100 µl
Immunogen	A synthetic peptide from aa region 1050-1120 of rat TRPA1 conjugated to an immunogenic carrier protein was used as the antigen. The peptide is homologous in mouse.
Conjugate	Unconjugated antibody
Also known	Transient receptor potential cation channel subfamily A member 1, ankyrin-like with transmembrane domains protein 1, transformation sensitive protein p120, ANKTM1
Host	NZ white rabbit
Purity	Whole serum
Clonality	Polyclonal
Isotype	Polyclonal, whole serum
Applications	IHC, WB. A dilution of 1 : 300 to 1 : 2000 is recommended. The optimal dilution should be determined by the end user. Not yet tested in other applications.
Specificity	Specific for TRPA1.
Spcs X-react.	Rat, mouse. Other species not yet tested.
Format	Lyophilised
Reconstitution	Reconstitute in 100 µl of sterile water. Centrifuge to remove any insoluble material.
Storage	Maintain the lyophilised/reconstituted antibodies frozen at -20°C for long term storage and refrigerated at 2-8°C for a shorter term. When reconstituting, glycerol (1:1) may be added for an additional stability. Avoid freeze and thaw cycles.
Expiry Date	12 months after reconstitution
Shipping	This item will be shipped to you at ambient temperature in a lyophilised form.
Limitation	For research use only



WB on mouse brain lysate (reduced, denatured) using Rabbit antibody to TRPA1 (OST00061W) at 1 : 1000 dilution.

Related Products

OST00062G Rabbit antibody to TRPA1 (1050-1120)