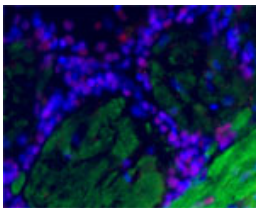


Sheep antibody to OMP

Code	OSS00001W
ID Tag	Sh2-180407-WS
Unit size	100 µl
Immunogen	A synthetic peptide from rat OMP conjugated to blue carrier protein has been used as the antigen. The peptide is homologous in mouse.
Conjugate	Unconjugated antibody
Also known	Olfactory neuronal-specific protein
Host	Sheep
Purity	Whole serum
Clonality	Polyclonal
Isotype	Polyclonal, whole serum
Applications	IHC, WB. Use at a dilution of 1 : 200 to 1 : 2000. The optimal dilution should be determined by the end user. For IHC, Zamboni's or 4% PFA fixatives are recommended.
Specificity	Highly specific for mature olfactory neurons (including axon and terminals).
Spcs X-react.	Rat, mouse. Other species have not yet been tested.
Format	Lyophilised
Reconstitution	Reconstitute in 100 µl of sterile water. Centrifuge to remove any insoluble material.
Storage	Maintain the lyophilised/reconstituted antibodies frozen at -20°C for long term storage and refrigerated at 2-8°C for a shorter term. When reconstituting, glycerol (1:1) may be added for an additional stability. Avoid freeze and thaw cycles.
Expiry Date	12 months after reconstitution
Shipping	This item will be shipped to you at ambient temperature in a lyophilised form.
Limitation	For research use only



IF on rat olfactory bulb using Rabbit antibody to cFos (c-fos) (OSR00004W) at a 1 : 500 dilution, Sheep antibody to OMP at 1 : 500 dilution and DAPI counterstained.

Related Products

OSS00002G Sheep antibody to OMP