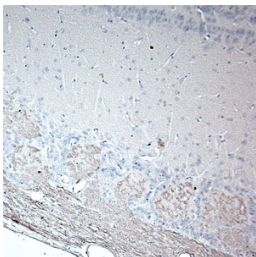


Rabbit antibody to OMP

Code	OSR00020G
ID Tag	Rb10-210365-G
Unit size	500 µg
Immunogen	A synthetic peptide from rat Olfactory Marker Protein (OMP) conjugated to blue carrier protein has been used as the antigen. The peptide is homologous in mouse.
Conjugate	Unconjugated antibody
Also known	Olfactory neuronal-specific protein
Host	NZ white rabbit
Purity	IgG
Clonality	Polyclonal
Isotype	Polyclonal, IgG
Applications	IHC, WB. Use at a concentration of 10-50 µg/ml. The optimal dilution should be determined by the end user. For IHC, Zamboni's or 4% PFA fixatives are recommended.
Specificity	Highly specific for mature olfactory neurons (including axon and terminals).
Spcs X-react.	Rat, mouse. Other species have not yet been tested.
Format	Lyophilised
Reconstitution	Reconstitute in 500 µl of sterile water. Centrifuge to remove any insoluble material.
Storage	Maintain the lyophilised/reconstituted antibodies frozen at -20°C for long term storage and refrigerated at 2-8°C for a shorter term. When reconstituting, glycerol (1:1) may be added for an additional stability. Avoid freeze and thaw cycles.
Expiry Date	12 months after reconstitution
Shipping	This item will be shipped to you at ambient temperature in a lyophilised form.
Limitation	For research use only



IHC on rat olfactory using Rabbit antibody to rat & mouse OMP (Olfactory Marker Protein): IgG (OSR00020G) at a concentration of 20 µg/ml in paraffin embeded section. Glomeruli are intensely stained. H&E counter stained.

Related Products

OSR00001W Rabbit antibody to OMP