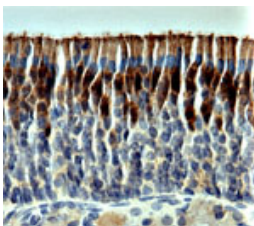


Rabbit antibody to OMP

Code	OSR00001W
ID Tag	Rb10-210365-WS
Unit size	100 µl
Immunogen	A synthetic peptide from rat Olfactory Marker Protein (OMP) conjugated to immunogenic carrier protein has been used as the antigen. The peptide is homologous with the corresponding sequence derived from OMP protein in mouse.
Purity	Whole serum
Conjugate	Unconjugated antibody
Also known	Olfactory neuronal-specific protein
Host	NZ white rabbit
Purity	Whole serum
Clonality	Polyclonal
Isotype	Polyclonal, whole serum
Applications	IHC, WB. Use at a dilution of 1 : 200 to 1 : 2000. The optimal dilution should be determined by the end user. For IHC, Zamboni' s or 4% PFA fixatives are recommended.
Specificity	Highly specific for mature olfactory neurons (including axon and terminals).
Spcs X-react.	Rat, mouse. Other species have not yet been tested.
Format	Lyophilised
Reconstitution	Reconstitute in 100 µl of sterile water. Centrifuge to remove any insoluble material.
Storage	Maintain the lyophilised/reconstituted antibodies frozen at -20°C for long term storage and refrigerated at 2-8°C for a shorter term. When reconstituting, glycerol (1:1) may be added for an additional stability. Avoid freeze and thaw cycles.
Expiry Date	12 months after reconstitution
Shipping	This item will be shipped to you at ambient temperature in a lyophilised form.
Limitation	For research use only



IHC on rat olfactory epithelium using Rabbit antibody to OMP (OSR00001W) at a dilution of 1: 1000 in paraffin embedded section (high power). Olfactory neurons are intensely stained. H&E counter stained.

Related Products

OSR00020G	Rabbit antibody to OMP
OSO00055W	Rabbit antibody to OMP