

Name: Recombinant protein of human cytochrome P450, family 2, subfamily D, polypeptide 6 (CYP2D6), transcript variant 1, with C-terminal DDK tag, expressed in human cells Product Data Sheet - PROTEIN	Catalog: TP700027
--------------------------------------------------------------------------------------------------------------------------------------------------------------------------------------------------------------------------	--------------------------

Gene Name: cytochrome P450 family 2 subfamily D member 6

GeneBank accession: NM_000106

Description: Recombinant protein of human cytochrome P450, family 2, subfamily D, polypeptide 6 (CYP2D6), transcript variant 1, with C-terminal DDK tag, expressed in human cells (TP700027)

Amount: 20 ug

Buffer and Storage: 25 mM Tris.HCl, pH 7.3, 100 mM glycine, 10% glycerol. Store at -80C. Avoid repeated freeze-thaw cycles. Stable for at least 3 months from receipt of products under proper storage and handling conditions.

Source: Recombinant protein was produced with A DNA sequence from TrueORF clone, RC223749, encoding human full-length CYP2D6

Protein Accn: NP_000097

Gene Synonym: CPD6|CYP2D|CYP2D7AP|CYP2D7BP|CYP2D7P2|CYP2D8P2|CYP2DL1|CYPIID6|P450-DB1|P450C2D|P450DB1

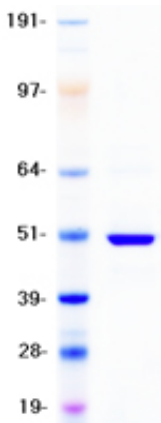
Predicted molecular weight: 57 kDa

Tags: C-terminal DDK

Purity: > 80% as determined by SDS-PAGE and Coomassie blue staining

Concentration: >50 ug/mL as determined by microplate BCA method

Protein Gel Analysis Data:



Purified recombinant protein CYP2D6 was analyzed by SDS-PAGE gel and Coomassie Blue Staining.

* More data may be available on our website: [TP700027](#)