

## Product datasheet for **TA332444**

### Optineurin (OPTN) Rabbit Polyclonal Antibody

#### Product data:

Product Type:	Primary Antibodies
Applications:	IHC, IP, WB
Recommended Dilution:	WB 1:500 - 1:2000
Reactivity:	Human, Mouse
Host:	Rabbit
Isotype:	IgG
Clonality:	Polyclonal
Immunogen:	Recombinant protein of human OPTN
Formulation:	Store at -20°C (regular) and -80°C (long term). Avoid freeze / thaw cycles. Buffer: PBS with 0.02% sodium azide, 50% glycerol, pH7.3.
Concentration:	lot specific
Purification:	Affinity purification
Conjugation:	Unconjugated
Storage:	Store at -20°C as received.
Stability:	Stable for 12 months from date of receipt.
Predicted Protein Size:	577
Gene Name:	optineurin
Database Link:	<a href="#">NP_068815</a> <a href="#">Entrez Gene 71648 Mouse</a> <a href="#">Entrez Gene 10133 Human</a> <a href="#">Q96CV9</a>
Background:	This gene encodes the coiled-coil containing protein optineurin. Optineurin may play a role in normal-tension glaucoma and adult-onset primary open angle glaucoma. Optineurin interacts with adenovirus E3-14.7K protein and may utilize tumor necrosis factor-alpha or Fas-ligand pathways to mediate apoptosis, inflammation or vasoconstriction. Optineurin may also function in cellular morphogenesis and membrane trafficking, vesicle trafficking, and transcription activation through its interactions with the RAB8, huntingtin, and transcription factor IIIA proteins. Alternative splicing results in multiple transcript variants encoding the same protein.

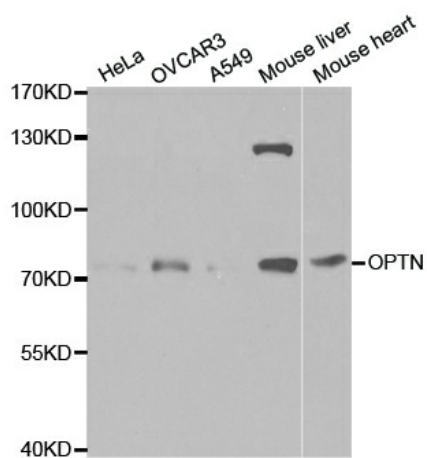


[View online »](#)

**Synonyms:** ALS12; FIP2; GLC1E; HIP7; HYPL; NRP; TFIIIA-INTP

**Protein Families:** Druggable Genome

**Product images:**



Western blot analysis of extracts of various cell lines, using OPTN antibody.