

Name: Rabbit polyclonal KLF4 Antibody
Product Data Sheet - ANTIBODY**Catalog: TA324725**

Components:	<ul style="list-style-type: none">• Rabbit polyclonal KLF4 Antibody (TA324725)• WB positive control also available: 20ug myc-DDK tagged KLF4 HEK293T over-expression lysate lyophilized in RIPA buffer (LC401356). (Reconstitute into 20ul of 1x SDS sample buffer before loading; load 5ul per lane as WB control or as desired)
Amount:	400ul
Immunogen:	This KLF4 antibody is generated from rabbits immunized with a KLH conjugated synthetic peptide between 481-504 amino acids from human KLF4.
Host:	Rabbit
Isotype:	IgG
Species Reactivity:	Human (Predicted: Mouse, Rat)
Guaranteed Applications:	WB, IF
Suggested Dilutions:	IF: 1:10~50, WB: 1:1000
Concentration:	0.42 mg/ml
Buffer:	Purified polyclonal antibody supplied in PBS with 0.09% (W/V) sodium azide.
Purification:	This antibody is purified through a protein A column, followed by peptide affinity purification.
Storage Condition:	Shipped at -20C or with ice packs. Upon delivery store at -20C. Dilute in PBS (pH7.3) if necessary. Stable for 12 months from date of receipt. Avoid repeated freeze-thaws.

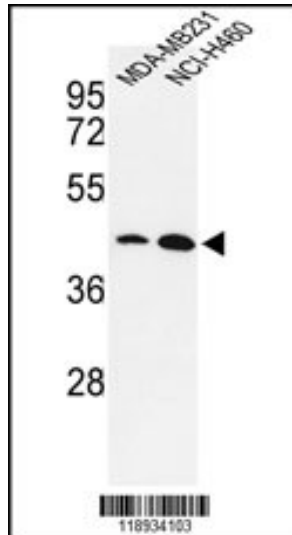
Target

Target Name:	Homo sapiens Kruppel-like factor 4 (gut) (KLF4)
Alternative Name:	EZF; GKLF
Database Link:	NP_004226 Entrez Gene 9314 Human Entrez Gene 16600 Mouse Entrez Gene 114505 Rat

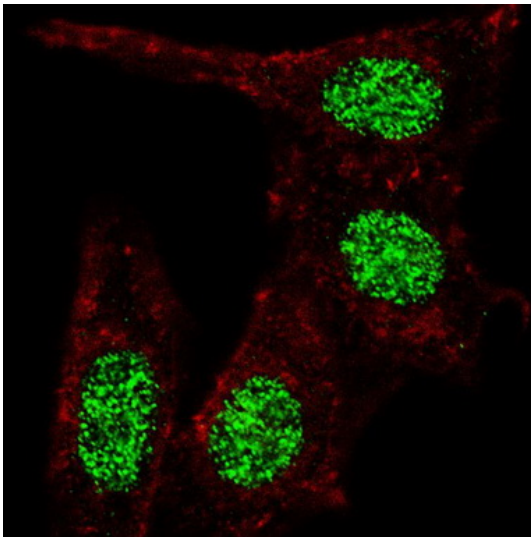
Function:

This product is to be used for laboratory only. Not for diagnostic or therapeutic use.

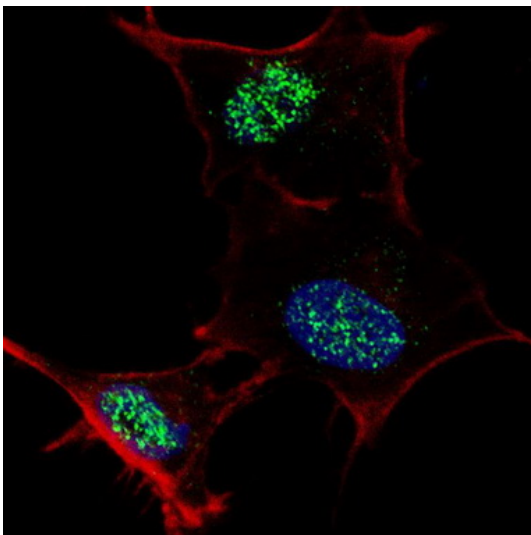
Validation Data



Western blot analysis of KLF4-S457 (Cat.# TA324725) in MDA-MB231, NCI-H460 cell line lysates (35ug/lane). KLF4 (arrow) was detected using the purified Pab.



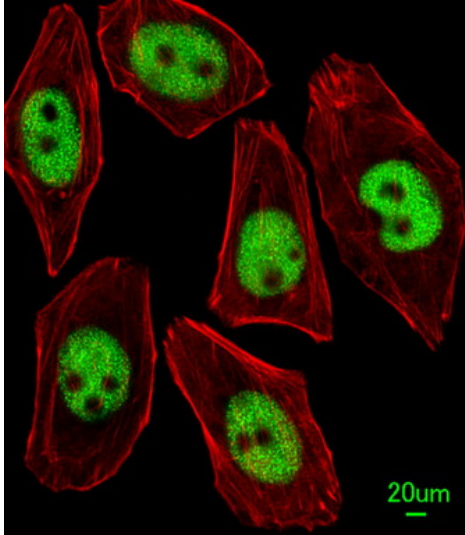
IF image of HeLa cells stained with TA324725 KLF4 (S457) antibody. HeLa cells were incubated with TA324725 KLF4 (S457) primary antibody (1:100, 2 h at RT). For secondary antibody, Alexa Fluor® 488 conjugated donkey anti-rabbit antibody (green) was used (1:1000, 1h). Cytoplasmic actin was counterstained with Alexa Fluor® 555 (red) conjugated Phalloidin . Note the highly specific localization of the phosphorylated KLF4 immunoreactivity to the nuclei but not the cytoplasm.



IF image of SY5Y cells stained with TA324725 KLF4 (S457) antibody. SY5Y cells were incubated with TA324725 KLF4 (S457) primary antibody (1:100, 2 h at RT). For secondary antibody, Alexa Fluor® 488 conjugated donkey anti-rabbit antibody (green) was used (1:1000, 1h). Cytoplasmic actin was counterstained with Alexa Fluor® 555 (red) conjugated Phalloidin . Note the highly specific localization of the phosphorylated KLF4 immunoreactivity to the nuclei.

This product is to be used for laboratory only. Not for diagnostic or therapeutic use.

© 2015 OriGene Technologies, Inc. 9620 Medical Center Dr., Suite 200, Rockville, MD 20850



Immunofluorescent analysis of U251 cells, using KLF4 Antibody (Cat. #TA324725). TA324725 was diluted at 1:25 dilution. Alexa Fluor 488-conjugated goat anti-rabbit IgG at 1:400 dilution was used as the secondary antibody (green). Cytoplasmic actin was counterstained with Dylight Fluor[®] 554 (red) conjugated Phalloidin (red).

* More validation images may be available on our website: <http://www.origene.com/antibody/TA324725.aspx>

This product is to be used for laboratory only. Not for diagnostic or therapeutic use.

© 2015 OriGene Technologies, Inc. 9620 Medical Center Dr., Suite 200, Rockville, MD 20850
