

Name: Rabbit polyclonal KLF4 Antibody
Product Data Sheet - ANTIBODY**Catalog: TA324724**

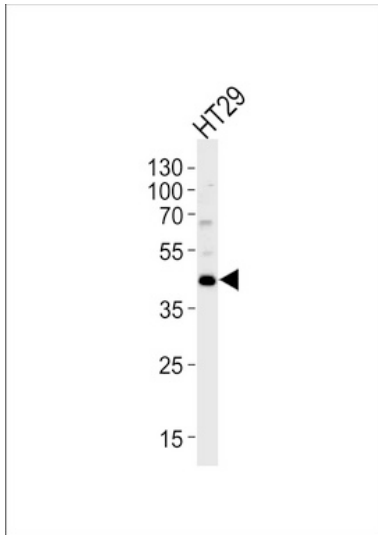
Components:	<ul style="list-style-type: none">• Rabbit polyclonal KLF4 Antibody (TA324724)• WB positive control also available: 20ug myc-DDK tagged KLF4 HEK293T over-expression lysate lyophilized in RIPA buffer (LC401356). (Reconstitute into 20ul of 1x SDS sample buffer before loading; load 5ul per lane as WB control or as desired)
Amount:	400ul
Immunogen:	This KLF4 antibody is generated from rabbits immunized with a his tag recombinant protein of human KLF4.
Host:	Rabbit
Isotype:	IgG
Species Reactivity:	Human
Guaranteed Applications:	WB, IHC, IF
Suggested Dilutions:	WB: 1:1000, IF: 1:10~50, IHC: 1:50~100
Concentration:	2.0 mg/ml
Buffer:	Purified polyclonal antibody supplied in PBS with 0.09% (W/V) sodium azide.
Purification:	This antibody is prepared by Saturated Ammonium Sulfate (SAS) precipitation followed by dialysis against PBS.
Storage Condition:	Shipped at -20C or with ice packs. Upon delivery store at -20C. Dilute in PBS (pH7.3) if necessary. Stable for 12 months from date of receipt. Avoid repeated freeze-thaws.

Target

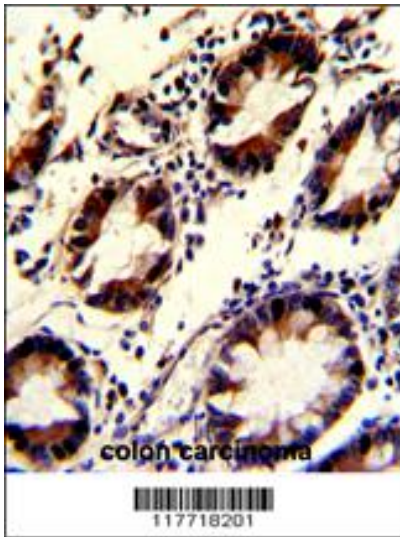
Target Name:	Homo sapiens Kruppel-like factor 4 (gut) (KLF4)
Alternative Name:	EZF; GKLF
Database Link:	NP_004226 Entrez Gene 9314 Human
Function:	

This product is to be used for laboratory only. Not for diagnostic or therapeutic use.

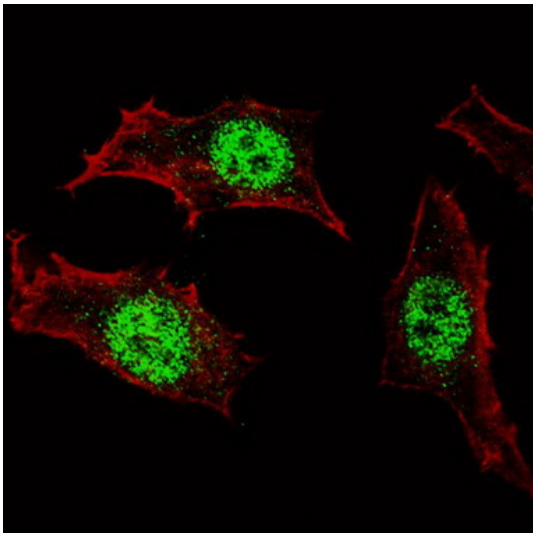
Validation Data



Western blot analysis of lysate from HT29 cell line, using KLF4 Antibody (Cat. #TA324724). TA324724 was diluted at 1:1000. A goat anti-rabbit (HRP) at 1:5000 dilution was used as the secondary antibody. Lysate at 35ug .



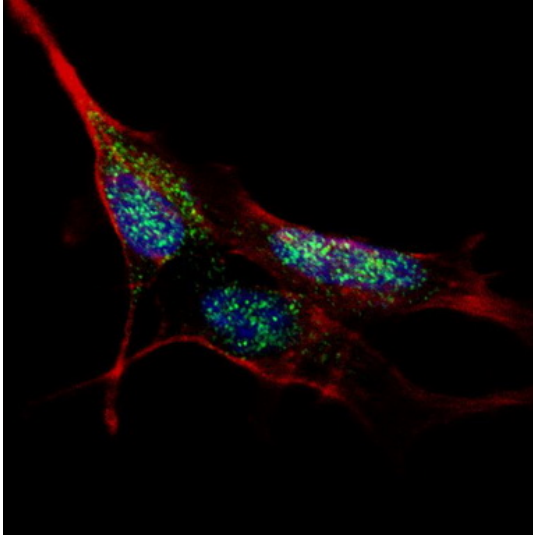
Formalin-fixed and paraffin-embedded human colon carcinoma with KLF4 Antibody, which was peroxidase-conjugated to the secondary antibody, followed by DAB staining. This data demonstrates the use of this antibody for immunohistochemistry; clinical relevance has not been evaluated.



IF image of HeLa cells stained with TA324724 KLF4 antibody. HeLa cells were incubated with TA324724 KLF4 primary antibody (1:100, 2 h at RT). For secondary antibody, Alexa Fluor® 488 conjugated donkey anti-rabbit antibody (green) was used (1:1000, 1h). Cytoplasmic actin was counterstained with Alexa Fluor® 555 (red) conjugated Phalloidin . KLF4 immunoreactivity is localized specifically to the nuclei in HeLa cells.

This product is to be used for laboratory only. Not for diagnostic or therapeutic use.

© 2015 OriGene Technologies, Inc. 9620 Medical Center Dr., Suite 200, Rockville, MD 20850



IF image of SY5Y cells stained with TA324724 KLF4 antibody. SY5Y cells were incubated with TA324724 KLF4 primary antibody (1:100, 2 h at RT). For secondary antibody, Alexa Fluor® 488 conjugated donkey anti-rabbit antibody (green) was used (1:1000, 1h). Cytoplasmic actin was counterstained with Alexa Fluor® 555 (red) conjugated Phalloidin . Nuclei were counterstained with Hoechst 33342 (blue). KLF4 immunoreactivity is localized to the nuclei in SY5Y cells.

* More validation images may be available on our website: <http://www.origene.com/antibody/TA324724.aspx>

This product is to be used for laboratory only. Not for diagnostic or therapeutic use.

© 2015 OriGene Technologies, Inc. 9620 Medical Center Dr., Suite 200, Rockville, MD 20850
