

Name: Rabbit polyclonal KLF4 Antibody (N-term)
Product Data Sheet - ANTIBODY**Catalog: TA324723**

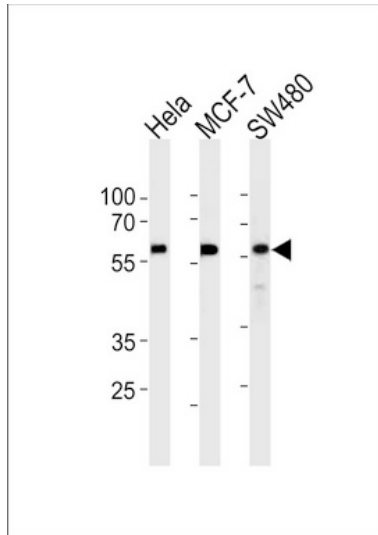
Components:	<ul style="list-style-type: none">• Rabbit polyclonal KLF4 Antibody (N-term) (TA324723)• WB positive control also available: 20ug myc-DDK tagged KLF4 HEK293T over-expression lysate lyophilized in RIPA buffer (LC401356). (Reconstitute into 20ul of 1x SDS sample buffer before loading; load 5ul per lane as WB control or as desired)
Amount:	400ul
Immunogen:	This KLF4 antibody is generated from rabbits immunized with a KLH conjugated synthetic peptide between 20-53 amino acids from the N-terminal region of human KLF4.
Host:	Rabbit
Isotype:	IgG
Species Reactivity:	Human
Guaranteed Applications:	WB
Suggested Dilutions:	WB: 1:1000
Concentration:	2.0 mg/ml
Buffer:	Purified polyclonal antibody supplied in PBS with 0.09% (W/V) sodium azide.
Purification:	This antibody is prepared by Saturated Ammonium Sulfate (SAS) precipitation followed by dialysis against PBS.
Storage Condition:	Shipped at -20C or with ice packs. Upon delivery store at -20C. Dilute in PBS (pH7.3) if necessary. Stable for 12 months from date of receipt. Avoid repeated freeze-thaws.

Target

Target Name:	Homo sapiens Kruppel-like factor 4 (gut) (KLF4)
Alternative Name:	EZF; GKLF
Database Link:	NP_004226 Entrez Gene 9314 Human
Function:	

This product is to be used for laboratory only. Not for diagnostic or therapeutic use.

Validation Data



KLF4 Antibody (N-term) (Cat. #TA324723) western blot analysis in HeLa, MCF-7, SW480 cell line lysates (35ug/lane). This demonstrates the KLF4 antibody detected the KLF4 protein (arrow).

* More validation images may be available on our website: <http://www.origene.com/antibody/TA324723.aspx>

This product is to be used for laboratory only. Not for diagnostic or therapeutic use.

© 2015 OriGene Technologies, Inc. 9620 Medical Center Dr., Suite 200, Rockville, MD 20850
