

Name: Rabbit polyclonal KLF4 Antibody (C-term)
Product Data Sheet - ANTIBODY**Catalog: TA324452**

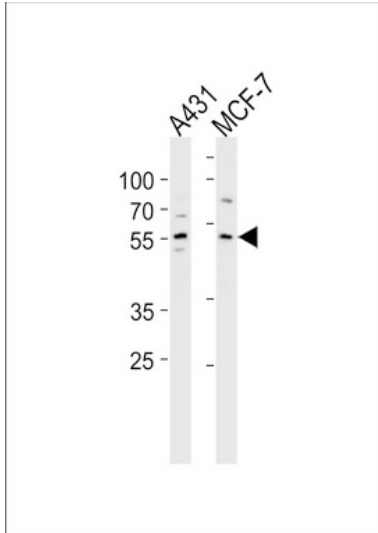
Components:	<ul style="list-style-type: none">• Rabbit polyclonal KLF4 Antibody (C-term) (TA324452)• WB positive control also available: 20ug myc-DDK tagged KLF4 HEK293T over-expression lysate lyophilized in RIPA buffer (LC401356). (Reconstitute into 20ul of 1x SDS sample buffer before loading; load 5ul per lane as WB control or as desired)
Amount:	400ul
Immunogen:	This KLF4 antibody is generated from rabbits immunized with a KLH conjugated synthetic peptide between 394-421 amino acids from the C-terminal region of human KLF4.
Host:	Rabbit
Isotype:	IgG
Species Reactivity:	Human
Guaranteed Applications:	WB, IF, FC
Suggested Dilutions:	WB: 1:1000, IF: 1:10~50, FC: 1:10~50
Concentration:	2.0 mg/ml
Buffer:	Purified polyclonal antibody supplied in PBS with 0.09% (W/V) sodium azide.
Purification:	This antibody is prepared by Saturated Ammonium Sulfate (SAS) precipitation followed by dialysis against PBS.
Storage Condition:	Shipped at -20C or with ice packs. Upon delivery store at -20C. Dilute in PBS (pH7.3) if necessary. Stable for 12 months from date of receipt. Avoid repeated freeze-thaws.

Target

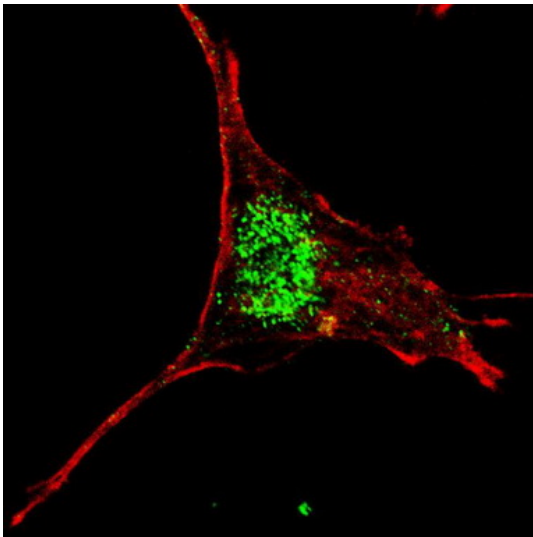
Target Name:	Homo sapiens Kruppel-like factor 4 (gut) (KLF4)
Alternative Name:	EZF; GKLF
Database Link:	NP_004226 Entrez Gene 9314 Human
Function:	

This product is to be used for laboratory only. Not for diagnostic or therapeutic use.

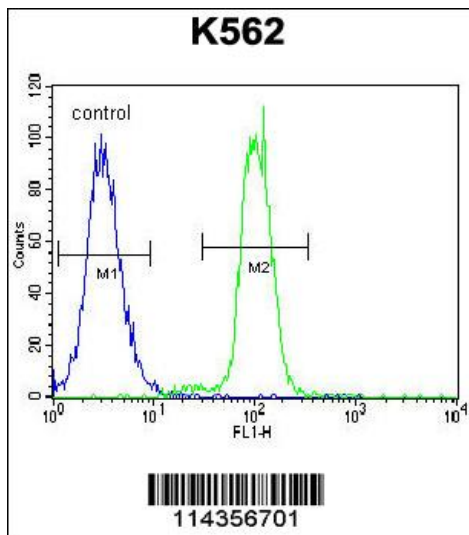
Validation Data



KLF4 Antibody (C-term) (Cat. #TA324452) western blot analysis in A431, MCF-7 cell line lysates (35ug/lane). This demonstrates the KLF4 antibody detected the KLF4 protein (arrow).



IF image of SY5Y cells stained with TA324452 KLF4 (C-term) antibody. SY5Y cells were incubated with TA324452 KLF4 (C-term) primary antibody (1:200, 2 h at RT). For secondary antibody, Alexa Fluor® 488 conjugated donkey anti-rabbit antibody (green) was used (1:1000, 1h). Cytoplasmic actin was counterstained with Alexa Fluor® 555 (red) conjugated Phalloidin. KLF4 immunoreactivity is localized very specifically to the nuclei of the SY5Y cells.



KLF4 Antibody (C-term) (Cat. #TA324452) flow cytometric analysis of K562 cells (right histogram) compared to a negative control cell (left histogram). FITC-conjugated goat-anti-rabbit secondary antibodies were used for the analysis.

* More validation images may be available on our website: <http://www.origene.com/antibody/TA324452.aspx>

This product is to be used for laboratory only. Not for diagnostic or therapeutic use.

© 2015 OriGene Technologies, Inc. 9620 Medical Center Dr., Suite 200, Rockville, MD 20850