

## Mouse Monoclonal Antibody to

# erbB3/Her3 (intracellular domain)

## clone 5A12

**Order No.:** 0237-100/erbB3-5A12  
**Size (µg):** 100  
**Lot No.:** 0237S



[www.nanotools.de](http://www.nanotools.de)

**orders & support:**

email: [info@nanotools.de](mailto:info@nanotools.de)  
 phone: +49-7641-455 670  
 fax: +49-7641-455 671

02/290108F

Isotype	Species Reactivity	Applications	Mol. Weight	Ref.Cell Line	Epitope	Immunogen
IgG1	human	WB, IHC (PS)	185 kDa	SW620	aa 1250-1270	peptide conjugated to hemocyanin

### Background and Specificity:

ErbB3 is a member of the EGFR/erbB receptor tyrosine kinase family. ErbB3 lacks intrinsic kinase activity due to an amino acid substitution within the ATP binding site. Upon heterodimerization with the other erbB family members, erbB3 becomes phosphorylated at multiple tyrosine residues that represent docking sites for downstream signaling proteins, e.g. PI3K, grb7 and shc. The erbB3 cytoplasmic domain contains 6 docking sites for PI3K. Thus, erbB3 is a potent activator of the PI3K/PKB signaling pathway.

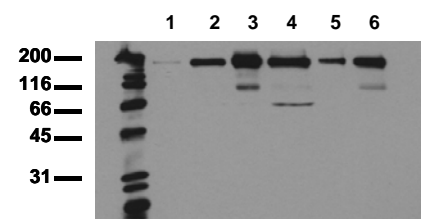
**Mab erbB3-5A12** recognizes erbB3 phosphorylation status independent at 185 kDa in Western-blot applications and is suitable for IHC staining of paraffin embedded tissues.

### Related Products

- mab to erbB2 (aa 1240-1260)**  
#0192-100/erbB2-19D2
- mab to erbB2 (intracellular domain; aa 860-880)**  
#0222-100/erbB2-24B5
- mab to erbB2 (phospho-Ser 1113)**  
#0139-100/erbB2-9E10
- mab to erbB2 (phospho-Thr 686)**  
#0182-100/erbB2-7F8
- mab to erbB2 (phospho-Tyr 1112)**  
#0216-100/erbB2-19G5
- mab to erbB2 (phospho-Tyr 1248; crossreacts with EGFR)**  
#0221-100/erbB2-6G7
- mab to erbB3 (C-terminus)**  
#0141-100/erbB3-11A4
- mab to erbB4 (aa1230-1250)**  
#0228-100/erbB4-6C5
- mab to erbB4 (pospho-Tyr1242)**  
#0229-100/erbB4-4C6

For monoclonal antibodies against EGFR and downstream targets, please refer to our website at [www.nanotools.de](http://www.nanotools.de)

- Purification:** The antibody was purified from serum-free cell culture supernatant by subsequent ultrafiltration and size exclusion chromatography.
- Formulation:** lyophilized from 1 ml PBS / 0.09 % Na-azide / PEG and Sucrose
- Reconstitution:** Reconstitute with 1 ml H2O (15 min, RT).
- Stability:** Upon reconstitution, aliquote and freeze in liquid nitrogen; reconstituted antibody can be stored frozen at -80°C up to 1 year. Thaw aliquots at 37°C. Thawed aliquots may be stored at 4°C up to 3 months. Avoid repeated freeze / thaw cycles.
- Positive Control:** #0961: Cell lysate from untreated SW620 cells
- Immunoblotting:** 0.5 µg/ml for HRPO/ECL detection  
**Recommended blocking buffer:** Casein/Tween 20 based blocking and blot incubation buffer, e.g. nanoTools product #3031-500/CPPT or #3031-3000/CPPT.
- Immunoprecipitation:** ND
- Immunocytochemistry:** use 1 - 10 µg/ml
- ELISA:** ND



### Detection of endogenous erbB3

Whole cell lysates of EGF stimulated serum starved tumor cells (20.000 cells per lane) were applied to SDS-PAGE and transferred to a PVDF membrane. The immunoblot was probed with mab erbB3-5A12 (0.5 µg/ml) for 1h at RT and developed by ECL (exp. time: 30 sec).

lane 1: MDA-MB 231; lane 2: MDA-MB 468; lane 3: MCF-7; lane 4: T47D; lane 5: SW480; lane 6: SW620

**All products are supplied for research and investigational use only. Not for use in humans or laboratory animals.**