

Product Datasheet

LC3B Antibody (1251D) NBP2-59800SS

Unit Size: 0.025 mg

Store at 4C short term. Aliquot and store at -20C long term. Avoid freeze-thaw cycles.

www.novusbio.com



technical@novusbio.com

Protocols, Publications, Related Products, Reviews, Research Tools and Images at:
www.novusbio.com/NBP2-59800

Updated 2/20/2018 v.20.1

Earn rewards for product
reviews and publications.

Submit a publication at www.novusbio.com/publications

Submit a review at www.novusbio.com/reviews/destination/NBP2-59800



NBP2-59800SS

LC3B Antibody (1251D)

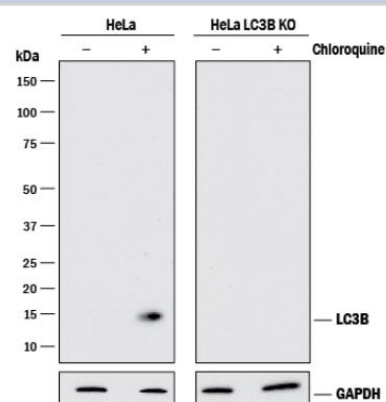
Product Information	
Unit Size	0.025 mg
Concentration	1.0 mg/ml
Storage	Store at 4C short term. Aliquot and store at -20C long term. Avoid freeze-thaw cycles.
Clonality	Monoclonal
Clone	1251D
Preservative	0.02% Sodium Azide
Isotype	IgG
Purity	Protein A or G purified
Buffer	PBS

Product Description	
Host	Rabbit
Gene ID	81631
Gene Symbol	MAP1LC3B
Species	Human, Mouse, Rat
Immunogen	A synthetic peptide made to an N-terminal portion of the human LC3 protein sequence (between residues 1-100). [UniProt# Q9GZQ8].

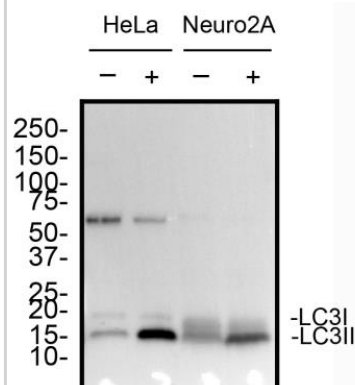
Product Application Details	
Applications	Western Blot, Simple Western, Flow (Intracellular), Immunocytochemistry/Immunofluorescence, Immunohistochemistry, Immunohistochemistry-Paraffin, Knockout Validated
Recommended Dilutions	Western Blot 1 - 2 ug/ml, Simple Western 5 ug/ml, Immunohistochemistry 2 - 5ug/ml, Immunocytochemistry/Immunofluorescence 5 ug/ml, Immunohistochemistry-Paraffin 2 - 5ug/ml, Flow (Intracellular) 1 ug/ml, Knockout Validated

Images

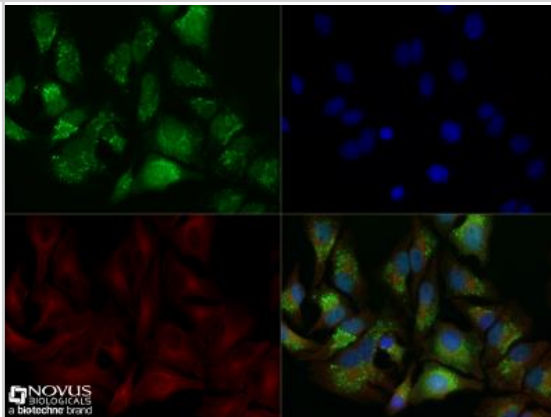
Knockout Validated: LC3B Antibody (1251D) [NBP2-59800] - HeLa human cervical epithelial carcinoma parental cell line and LC3B knockout HeLa cell line (KO) untreated (-) or treated (+) with 50 uM Chloroquine for 18 hours. PVDF membrane was probed with 0.1 ug/mL of Rabbit Anti-LC3B Monoclonal Antibody (Catalog # NBP2-59800) followed by HRP-conjugated Anti-Rabbit IgG Secondary Antibody (Catalog # HAF008). A specific band was detected for LC3B at approximately 15 kDa (as indicated) in the parental HeLa cell line, but is not detectable in the knockout HeLa cell line. GAPDH (Catalog # AF5718) is shown as a loading control. This experiment was conducted under reducing conditions.



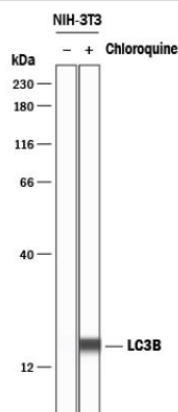
Western Blot: LC3B Antibody (1251D) [NBP2-59800] - Total protein from HeLa and Neuro2A cells treated with or without 50 uM chloroquine for 24 hours was separated on a 4-15% gel by SDS-PAGE, transferred to 0.2 um PVDF membrane and blocked in 5% non-fat milk in TBST. The membrane was probed with 2.0 ug/ml anti-LC3 (1251d) in blocking buffer and detected with an anti-rabbit HRP secondary antibody using chemiluminescence. Note the detection of LC3I and LC3II.



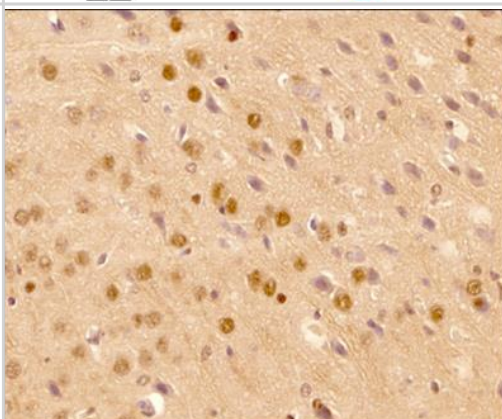
Immunocytochemistry/Immunofluorescence: LC3B Antibody (1251D) [NBP2-59800] - HeLa cells were treated with 50uM CQ overnight, fixed for 10 minutes using 10% formalin and then permeabilized for 5 minutes using 1X TBS + 0.5% Triton-X100. The cells were incubated with anti-LC3A (1251d) at 5 ug/ml overnight at 4C and detected with an anti-mouse Dylight 488 (Green) at a 1:500 dilution. Actin was detected with Phalloidin 568 (Red) at a 1:200 dilution. Nuclei were counterstained with DAPI (Blue). Cells were imaged using a 40X objective.



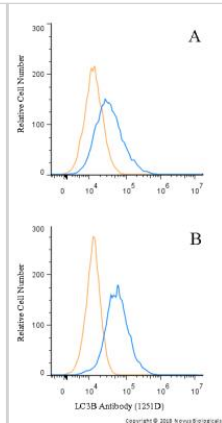
Simple Western: LC3B Antibody (1251D) [NBP2-59800] - Simple Western lane view shows lysates of NIH-3T3 mouse embryonic fibroblast cell line untreated (-) or treated (+) with 50 uM Chloroquine for 18 hours, loaded at 0.2 mg/ml. A specific band was detected for LC3B at approximately 17 kDa (as indicated) using 5 ug/mL of Rabbit Anti-Human LC3B Monoclonal Antibody (catalog number NBP2-59800). This experiment was conducted under reducing conditions and using the 12-230 kDa separation system.



Immunohistochemistry-Paraffin: LC3B Antibody (1251D) [NBP2-59800] - IHC analysis of a formalin fixed paraffin embedded (FFPE) tissue section of mouse brain using LC3B antibody (clone 1251D) at 5ug/ml concentration (1:200 dilution). The primary antibody binding to LC3 in cells was detected using HRP conjugated anti-Rabbit secondary antibody with DAB reagent, and the sections were further counterstained with hematoxylin for labeling cellular nuclei. This LC3 antibody generated a diffused staining in all cell types (except the endothelial cells of blood vessels) and the signal was strongest in a subset of neuronal cells.



Flow (Intracellular): LC3B Antibody (1251D) [NBP2-59800] - HeLa cells were either untreated (A) or treated with 50uM chloroquine for 24 hours (B). An intracellular stain was performed with LC3B (1251D) antibody NBP2-59800 (blue) and a matched isotype control MAB1050 (orange). Cells were fixed with 4% paraformaldehyde, following fixation, cells were permeabilized with 0.1% saponin. Cells were incubated in an antibody dilution of 1 ug/mL for 30 minutes at room temperature, followed by rabbit IgG APC-conjugated secondary antibody (F0111, R&D Systems).





Novus Biologicals USA

8100 Southpark Way, A-8
Littleton, CO 80120
USA

Phone: 303.730.1950
Toll Free: 1.888.506.6887
Fax: 303.730.1966
novus@novusbio.com

Novus Biologicals Canada

461 North Service Road West, Unit B37
Oakville, ON L6M 2V5
Canada

Phone: 905.827.6400
Toll Free: 855.668.8722
Fax: 905.827.6402
canada@novusbio.com

Novus Biologicals Europe

19 Barton Lane
Abingdon Science Park
Abingdon, OX14 3NB, United Kingdom
Phone: (44) (0) 1235 529449
Free Phone: 0800 37 34 15
Fax: (44) (0) 1235 533420
info@bio-techne.com

General Contact Information

www.novusbio.com
Technical Support: technical@novusbio.com
Orders: orders@novusbio.com
General: novus@novusbio.com

Limitations

This product is for research use only and is not approved for use in humans or in clinical diagnosis. Primary Antibodies are guaranteed for 1 year from date of receipt.

For more information on our 100% guarantee, please visit www.novusbio.com/guarantee

Earn gift cards/discounts by submitting a review: www.novusbio.com/reviews/submit/NBP2-59800

Earn gift cards/discounts by submitting a publication using this product:
www.novusbio.com/publications

