

# Product Datasheet

## Ki-67/MKI67 Antibody (1297A) NBP2-54791SS

Unit Size: 0.025 mg

Store at 4C short term. Aliquot and store at -20C long term. Avoid freeze-thaw cycles.

[www.novusbio.com](http://www.novusbio.com)



[technical@novusbio.com](mailto:technical@novusbio.com)

### Publications: 1

Protocols, Publications, Related Products, Reviews, Research Tools and Images at:  
[www.novusbio.com/NBP2-54791](http://www.novusbio.com/NBP2-54791)

Updated 11/21/2017 v.20.1

Earn rewards for product  
reviews and publications.

Submit a publication at [www.novusbio.com/publications](http://www.novusbio.com/publications)

Submit a review at [www.novusbio.com/reviews/destination/NBP2-54791](http://www.novusbio.com/reviews/destination/NBP2-54791)



**NBP2-54791SS**

Ki-67/MKI67 Antibody (1297A)

| <b>Product Information</b> |  |
|----------------------------|--|
| <b>Unit Size</b>           | 0.025 mg   |
| <b>Concentration</b>       | 1.0 mg/ml  |
| <b>Storage</b>             | Store at 4C short term. Aliquot and store at -20C long term. Avoid freeze-thaw cycles. |
| <b>Clonality</b>           | Monoclonal   |
| <b>Clone</b>               | 1297A  |
| <b>Preservative</b>        | 0.02% Sodium Azide   |
| <b>Purity</b>              | Protein A or G purified  |
| <b>Buffer</b>              | PBS  |

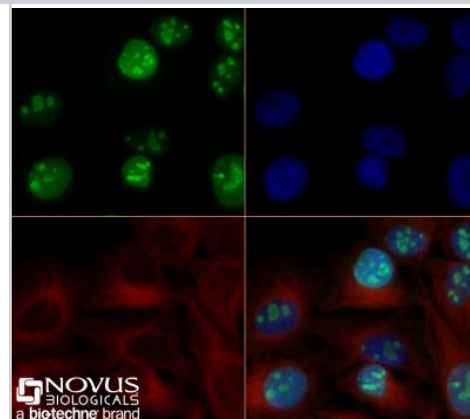
| <b>Product Description</b> |  |
|----------------------------|--|
| <b>Host</b>                | Rabbit   |
| <b>Gene ID</b>             | 4288   |
| <b>Gene Symbol</b>         | MKI67  |
| <b>Species</b>             | Human  |
| <b>Immunogen</b>           | A synthetic peptide made to an internal portion of the human Ki67 protein (between amino acids 1600-1700) [UniProt P46013] |

| <b>Product Application Details</b> |  |
|------------------------------------|--|
| <b>Applications</b>                | Flow Cytometry, Flow (Intracellular), Immunocytochemistry/Immunofluorescence, Immunohistochemistry, Immunohistochemistry-Paraffin  |
| <b>Recommended Dilutions</b>       | Flow Cytometry 1 ug/mL, Immunohistochemistry 3-15 ug/ml, Immunocytochemistry/Immunofluorescence 1-10 ug/ml, Immunohistochemistry-Paraffin 3-15 ug/ml, Flow (Intracellular) 1 ug/mL |

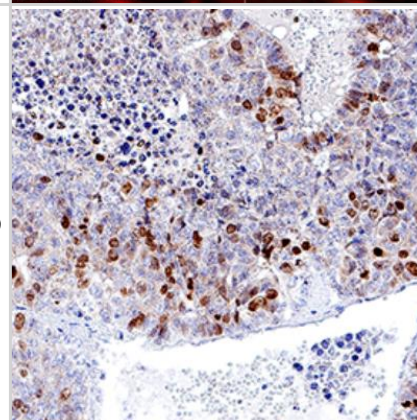


## Images

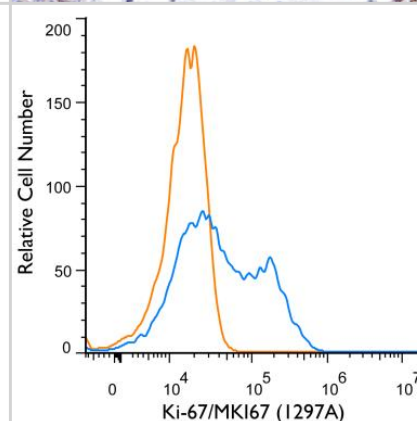
**Immunocytochemistry/Immunofluorescence: Ki-67/MKI67 Antibody (1297A) [NBP2-54791]** - HeLa cells were fixed for 10 minutes using 10% formalin and then permeabilized for 5 minutes using 1X TBS + 0.5% Triton-X100. The cells were incubated with anti-Ki67/MKI67 (1297A) at 2.0 ug/ml overnight at 4C and detected with an anti-rabbit Dylight 488 (Green) at a 1:500 dilution. Alpha tubulin (DM1A) NB100-690 was used as a co-stain at a 1:1000 dilution and detected with an anti-mouse Dylight 550 (Red) at a 1:500 dilution. Nuclei were counterstained with DAPI (Blue). Cells were imaged using a 40X objective.



**Immunohistochemistry-Paraffin: Ki-67/MKI67 Antibody (1297A) [NBP2-54791]** - Ki-67/MKI67 was detected in immersion fixed paraffin-embedded sections of human liver cancer tissue using Rabbit Anti-Human Ki-67/MKI67 Monoclonal Antibody at 3 µg/mL for 1 hour at room temperature followed by incubation with the Anti-Rabbit IgG VisUCyte™ HRP Polymer Antibody. Tissue was stained using DAB (brown) and counterstained with hematoxylin (blue). Specific staining was localized to nuclei. Staining with VisUCyte HRP Polymer Detection Reagents.



**Flow (Intracellular): Ki-67/MKI67 Antibody (1297A) [NBP2-54791]** - An intracellular stain was performed on Jurkat Cells with Ki-67/MKI67 (1297A) antibody NBP2-54791 (blue) and a matched isotype control MAB1050 (orange). Cells were fixed with 4% paraformaldehyde, following fixation, cells were permeabilized with 0.1% saponin. Cells were incubated in an antibody dilution of 1 ug/mL for 30 minutes at room temperature, followed by rabbit IgG APC-conjugated secondary antibody (F0111, R&D Systems).



## Publications

Ly C, Ferrier J, Gaudet J, Yockell-Lelievre J. Vaccinium angustifolium (lowbush blueberry) leaf extract increases extravillous trophoblast cell migration and invasion in vitro. *Phytother Res.* 2018 Jan 29 [PMID: 29377302] (IHC, Human)



### **Novus Biologicals USA**

8100 Southpark Way, A-8  
Littleton, CO 80120  
USA

Phone: 303.730.1950  
Toll Free: 1.888.506.6887  
Fax: 303.730.1966  
novus@novusbio.com

### **Novus Biologicals Canada**

461 North Service Road West, Unit B37  
Oakville, ON L6M 2V5  
Canada

Phone: 905.827.6400  
Toll Free: 855.668.8722  
Fax: 905.827.6402  
canada@novusbio.com

### **Novus Biologicals Europe**

19 Barton Lane  
Abingdon Science Park  
Abingdon, OX14 3NB, United Kingdom

Phone: (44) (0) 1235 529449  
Free Phone: 0800 37 34 15  
Fax: (44) (0) 1235 533420  
info@bio-techne.com

### **General Contact Information**

www.novusbio.com  
Technical Support: technical@novusbio.com  
Orders: orders@novusbio.com  
General: novus@novusbio.com

### **Limitations**

This product is for research use only and is not approved for use in humans or in clinical diagnosis. Primary Antibodies are guaranteed for 1 year from date of receipt.

For more information on our 100% guarantee, please visit [www.novusbio.com/guarantee](http://www.novusbio.com/guarantee)

Earn gift cards/discounts by submitting a review: [www.novusbio.com/reviews/submit/NBP2-54791](http://www.novusbio.com/reviews/submit/NBP2-54791)

Earn gift cards/discounts by submitting a publication using this product:  
[www.novusbio.com/publications](http://www.novusbio.com/publications)

