

Product Datasheet

MAP2 Antibody (2C4) NBP2-50032SS

Unit Size: 0.025ml

Store at 4C short term. Aliquot and store at -20C long term. Avoid freeze-thaw cycles.

www.novusbio.com



technical@novusbio.com

Protocols, Publications, Related Products, Reviews, Research Tools and Images at:
www.novusbio.com/NBP2-50032

Updated 10/23/2016 v.20.1

Earn rewards for product
reviews and publications.

Submit a publication at www.novusbio.com/publications

Submit a review at www.novusbio.com/reviews/destination/NBP2-50032



NBP2-50032SS

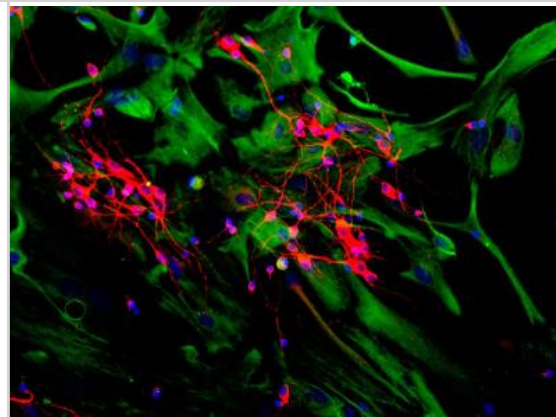
MAP2 Antibody (2C4)

Product Information	
Unit Size	0.025ml
Concentration	1 mg/ml
Storage	Store at 4C short term. Aliquot and store at -20C long term. Avoid freeze-thaw cycles.
Clonality	Monoclonal
Clone	2C4
Preservative	5mM Sodium Azide
Isotype	IgG1
Purity	Immunogen affinity purified
Buffer	PBS and 50% Glycerol
Product Description	
Host	Mouse
Gene ID	4133
Gene Symbol	MAP2
Species	Human, Mouse, Rat
Specificity/Sensitivity	This antibody will react with all known MAP2 isoforms.
Immunogen	Full length recombinant human MAP2D. [UniProt# P11137]
Product Application Details	
Applications	Western Blot, Immunocytochemistry/Immunofluorescence
Recommended Dilutions	Western Blot 1:5000 - 1:10000, Immunocytochemistry/Immunofluorescence 1:5000 - 1:10000
Application Notes	In Western blot, the strong bands running at about 280 kDa corresponds to MAP2A/B and bands running at 70 kDa correspond to MAP2C/D.

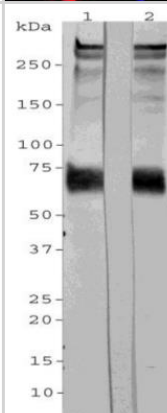


Images

Immunocytochemistry/Immunofluorescence: MAP2 Antibody (2C4) [NBP2-50032] - Mixed neuron and glia cultures stained with NBP2-50032 (red) and chicken antibody to Vimentin (green) and DNA (blue). NBP2-50032 reveals strong cytoplasmic staining of dendrites and perikarya of neuronal cells, while Vimentin was visualized in astrocytes and fibroblasts.



Western Blot: MAP2 Antibody (2C4) [NBP2-50032] - Rat whole brain extract, HeLa, SH-SY5Y, HEK293, and NIH/3T3 cells probed with mouse monoclonal anti-MAP2 antibody (green). All forms of MAP2 are present in the rat brain homogenate. A band at about 280 kDa correspond to full length intact MAP2A/2B. Bands appear at 70kDa correspond to MAP2C/D. The fainter bands in between correspond to in vivo fragments of MAP2A/B, which are very sensitive to proteases. Of the cell lines tested, only the SH-SY5Y cell line, which has neuronal properties, is positive for ~70kDa MAP2C/D. Blot was simultaneously probed with chicken polyclonal antibody against Vimentin (NB300-223, red), showing a single strong band at ~50 kDa.





Novus Biologicals USA

8100 Southpark Way, A-8
Littleton, CO 80120
USA

Phone: 303.730.1950
Toll Free: 1.888.506.6887
Fax: 303.730.1966
novus@novusbio.com

Novus Biologicals Canada

461 North Service Road West, Unit B37
Oakville, ON L6M 2V5
Canada

Phone: 905.827.6400
Toll Free: 855.668.8722
Fax: 905.827.6402
canada@novusbio.com

Novus Biologicals Europe

19 Barton Lane
Abingdon Science Park
Abingdon, OX14 3NB, United Kingdom

Phone: (44) (0) 1235 529449
Free Phone: 0800 37 34 15
Fax: (44) (0) 1235 533420
info@bio-techne.com

General Contact Information

www.novusbio.com
Technical Support: technical@novusbio.com
Orders: orders@novusbio.com
General: novus@novusbio.com

Limitations

This product is for research use only and is not approved for use in humans or in clinical diagnosis. Primary Antibodies are guaranteed for 1 year from date of receipt.

For more information on our 100% guarantee, please visit www.novusbio.com/guarantee

Earn gift cards/discounts by submitting a review: www.novusbio.com/reviews/submit/NBP2-50032

Earn gift cards/discounts by submitting a publication using this product:
www.novusbio.com/publications

