

Product Datasheet

ST6 Gal Sialyltransferase 1/ST6GAL1/CD75 Antibody NBP2-29466-0.1ml

Unit Size: 0.1 ml

Store at 4C short term. Aliquot and store at -20C long term. Avoid freeze-thaw cycles.

www.novusbio.com



support@novusbio.com

Publications: 2

Protocols, Publications, Related Products, Reviews, Research Tools and Images at:
www.novusbio.com/NBP2-29466

Updated 5/15/2014 v.20.1

NBP2-29466-0.1ml

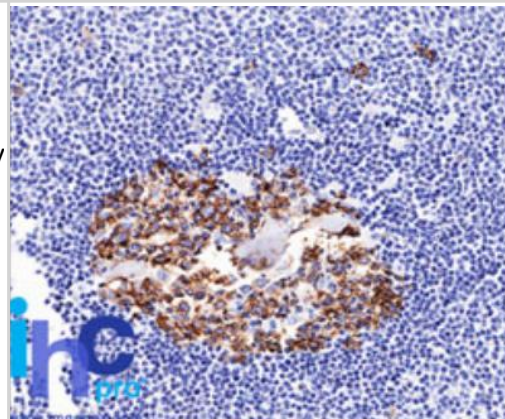
ST6 Gal Sialyltransferase 1/ST6GAL1/CD75 Antibody (LN-1)

Product Information	
Unit Size	0.1 ml
Concentration	This product is unpurified. The exact concentration of antibody is not quantifiable.
Storage	Store at 4C short term. Aliquot and store at -20C long term. Avoid freeze-thaw cycles.
Clonality	Monoclonal
Clone	LN-1
Preservative	0.05% Sodium Azide
Isotype	IgM Kappa
Purity	Bioreactor concentrate
Buffer	Culture Medium
Product Description	
Host	Mouse
Gene ID	6480
Gene Symbol	ST6GAL1
Species	Human
Specificity/Sensitivity	Recognizes a neuraminidase-sensitive sialoprotein (CDw75), present on cell membrane and cytoplasm of germinal center B-cells and derived lymphomas. This MAb reacts with RBC precursors of bone marrow, ductal and ciliated epithelial cells of kidney, breast, prostate, pancreas, lung, and with glioblastomas, astrocytomas, and Reed Sternberg cells in lymphocyte predominant Hodgkin's disease.
Immunogen	Nuclei from pokeweed mitogen stimulated peripheral blood lymphocytes were used as immunogen to generate the CDw75 antibody (Epstein, 1984).
Product Application Details	
Applications	Flow Cytometry, Immunocytochemistry/Immunofluorescence, Immunohistochemistry, Immunohistochemistry-Frozen, Immunohistochemistry-Paraffin
Recommended Dilutions	Flow cytometry 5-10ul/million cells, Immunocytochemistry/Immunofluorescence 1:25-1:50, immunohistochemistry 1:50-1:100, Immunohistochemistry-Frozen 1:50-1:100, Immunohistochemistry-Paraffin 1:50-1:100
Application Notes	1. The CDw75 antibody stains the surface of erythrocytes and this feature can be used as an internal positive control for biological assay validation. 2. Germinal center B lymphocytes in lymph node or tonsils can be used as positive lymphocyte staining controls. 3. CDw75 is a carbohydrate antigen. In addition to the LN-1 antibody, other CDw75 antibody clones have been described in the literature. Each antibody may have different staining patterns due their specific reactivity to variable complex oligosaccharide CDw75 carbohydrate structures (Bast, 1992; Kumar, 2012). Staining of formalin-fixed tissues requires boiling tissue sections in 10mM citrate buffer, pH 6.0, for 10-20 min followed by cooling at RT for 20 minutes

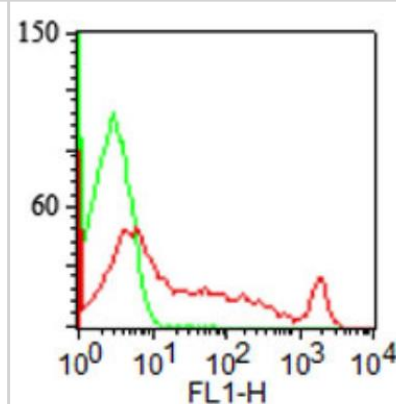


Images

Immunohistochemistry-Paraffin: CD75 Antibody (LN-1) [NBP2-29466] - Formalin-fixed, paraffin-embedded normal human spleen tissue stained with CDw75 antibody (1:500), peroxidase-conjugate and DAB chromogen. Note the cell membrane/cytoplasmic staining. Immunohistochemical staining of formalin/paraffin tissues is enhanced by unmasking of the target epitope by boiling the tissue sections in 10mM citrate buffer, pH 6.0, for 10 min followed by cooling at room temp for 20 min.



Flow Cytometry: CD75 Antibody (LN-1) [NBP2-29466] - Surface staining of 10^6 human lymphocytes with 25 ul of CDw75 antibody (red) and 1 ug of isotype control (green, 20113A). PPI negative population analysed.



Publications

Epstein AL, Marder RJ, Winter JN et al. Two new monoclonal antibodies (LN-1, LN-2) reactive in B5 formalin-fixed, paraffin-embedded tissues with follicular center and mantle zone human B lymphocytes and derived tumors. *J Immunol.* 1984 Aug [PMID: 6376628] (ICC/IF, IHC-P, Flow-CS,)

Details:
Monoclonal (LN-1, LN-2) reactive in B5 formalin-fixed, paraffin-embedded tissues with follicular center and mantle zone B lymphocytes and derived tumors. IF: Tables I and II (human lymphoma, leukemia, and lymphoblastoid cell lines), Table III (lymphoma and CLL biopsies), Table V1 (human solid tumor cell lines including HeLa); IHC (paraffin): Table IV and Figs 1-12 (lymphoid and hematopoietic tissues), Table V (normal non-lymphoid tissues); Flow (cell surface): Table VII (peripheral blood and lymph node mononuclear cells). Note: Table IX provides a tissue type reactivity summary.

Villar-Portela S, Muinelo-Romay L, Cuevas E et al. Disease-free survival of colorectal cancer patients in relation to CDw75 antigen expression. *Pathobiology.* 2011 [PMID: 21778787] (IHC-P)

Details:
IHC (paraffin): normal, inflammatory and cancerous colon tissue, Figs 1, 2; Tables 1-4.



Novus Biologicals USA

8100 Southpark Way, A-8
Littleton, CO 80120
USA
Phone: 303.730.1950
Toll Free: 1.888.506.6887
Fax: 303.730.1966
novus@novusbio.com

Novus Biologicals Canada

461 North Service Road West, Unit B37
Oakville, ON L6M 2V5
Canada
Phone: 905.827.6400
Toll Free: 855.668.8722
Fax: 905.827.6402
canada@novusbio.com

Novus Biologicals Europe

19 Barton Lane
Abingdon Science Park
Abingdon, OX14 3NB, United Kingdom
Phone: (44) (0) 1235 529449
Free Phone: 0800 37 34 15
Fax: (44) (0) 1235 533420
info@bio-techne.com

General Contact Information

www.novusbio.com
Technical Support: technical@novusbio.com
Orders: orders@novusbio.com
General: novus@novusbio.com

Limitations

This product is for research use only and is not approved for use in humans or in clinical diagnosis. Primary Antibodies are guaranteed for 1 year from date of receipt.

For more information on our guarantee, please visit www.novusbio.com/guarantee.

