

Product Datasheet

TLR8 Antibody (44C143) [PE] NBP2-24817

Unit Size: 0.1 ml

Store at 4C in the dark.

www.novusbio.com



technical@novusbio.com

Publications: 30

Protocols, Publications, Related Products, Reviews, Research Tools and Images at:
www.novusbio.com/NBP2-24817

Updated 10/12/2016 v.20.1

**Earn rewards for product
reviews and publications.**

Submit a publication at www.novusbio.com/publications

Submit a review at www.novusbio.com/reviews/destination/NBP2-24817



NBP2-24817

TLR8 Antibody (44C143) [PE]

Product Information	
Unit Size	0.1 ml
Concentration	Please see the vial label for concentration. If unlisted please contact technical services.
Storage	Store at 4C in the dark.
Clonality	Monoclonal
Clone	44C143
Preservative	0.05% Sodium Azide
Isotype	IgG1 Kappa
Conjugate	PE
Purity	Protein G purified
Buffer	PBS

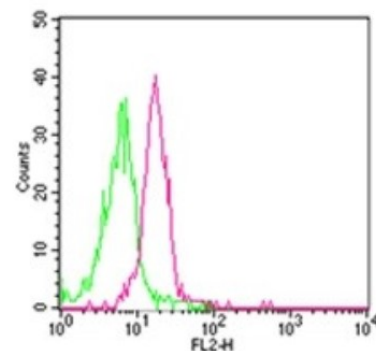
Product Description	
Host	Mouse
Gene ID	51311
Gene Symbol	TLR8
Species	Human, Mouse
Immunogen	This antibody was developed against a KLH-conjugated synthetic peptide of human TLR8, within amino acids 750-850.

Product Application Details	
Applications	Flow Cytometry, Flow (Intracellular)
Recommended Dilutions	Flow Cytometry 1ul/1 million cells, Flow (Intracellular)
Application Notes	Staining of formalin-fixed tissues is enhanced by boiling tissue sections in 10 mM sodium citrate buffer, pH 6.0 for 10-20 min followed by cooling at RT for 20 min. Use in Flow Intracellular reported in scientific literature (PMID 24836676)

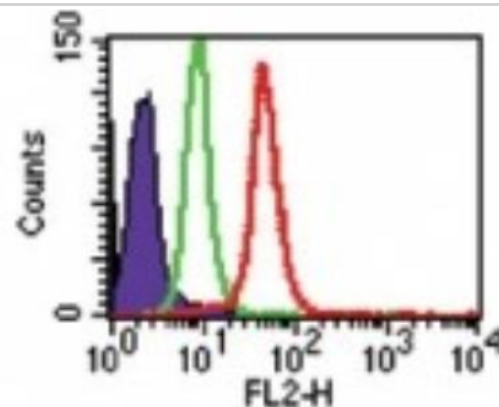


Images

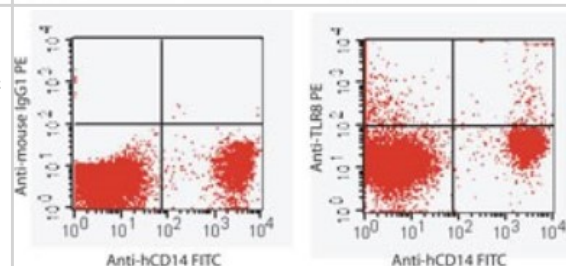
Flow Cytometry: TLR8 Antibody (44C143) [PE] [NBP2-24817] - Intracellular analysis of TLR8 in BALB/c mouse splenocytes (lymphocyte gate) using 2 ug of this antibody. Green represents isotype control ; red represents anti-TLR8 antibody.



Flow Cytometry: TLR8 Antibody (44C143) [PE] [NBP2-24817] - Analysis of TLR8 in Ramos cells using 2 ug of NBP2-24817. Shaded histogram represents Ramos cells without antibody; green represents isotype control; red represents anti-TLR8 antibody.



Flow Cytometry: TLR8 Antibody (44C143) [PE] [NBP2-24817] - Intracellular flow cytometric analysis of TLR8 in 10⁶ human PBMCs using 0.5 ug of NBP2-24817, 0.25 ug of anti-human CD14, and 0.5 ug of isotype control. Novus's TLR intracellular staining flow assay kit was used to test this product.



Publications

Deng G, Ge J, Liu C et al. Impaired expression and function of TLR8 in chronic HBV infection and its association with treatment responses during peg-IFN- α -2a antiviral therapy. *Clin Res Hepatol Gastroenterol*. Feb 21 2017 12:00AM [PMID: 28236535] (IHC)

Jamin A, Dehoux L, Dossier C et al. Toll-like receptor 3 expression and function in childhood idiopathic nephrotic syndrome *Clin. Exp. Immunol*. 2015 Jun 30 [PMID: 26123900] (FLOW, Human)

Details:

TLR8 antibody clone 44C143 [PE] (Imgenex: IMG-321D) was used for FLOW on peripheral blood mononuclear cells/PBMC of idiopathic nephrotic syndrome/INS children, including 28 in relapse, 23 in remission and 40 controls. The cells were incubated with conjugated antibodies along with isotype control for 30 minutes at 4C and 10(5) viable PBMCs were analyzed using FACSCantoll/FACSDiva.

Chatillon JF. Direct Toll-Like Receptor 8 signaling increases the functional avidity of human CD8+ T lymphocytes generated for adoptive T cell therapy strategies *Immunity, Inflammation and Disease*. 2015 Feb 19 (FLOW, Human)

Zimmermann M, Aguilera FB, Castellucci M et al. Chromatin remodelling and autocrine TNFalpha are required for optimal interleukin-6 expression in activated human neutrophils *Nat Commun.* 2015 Jan 24 [PMID: 25616107] (FLOW, Human)

Details:

TLR8 antibody/Imgenex IMG-321D used for FLOW on human neutrophils - 4% paraformaldehyde fixation, permeabilization with solution containing 0.5% saponin and 5% human, PE-conjugated TLR8 primary antibody used at 1:100 dilution, mouse IgG-PE conjugated included as isotype control, samples analyzed with seven-colour MACSQuant Analyzer (Supplementary Figure 2).

Camacho-Sandoval R, Del Rio Estrada PM, Rivero-Arrieta A et al. Differential partial activation phenotype and production of TNF-a by conventional dendritic cells in response to LPS in HIV+ viremic subjects and HIV+ controllers. *Clin Exp Immunol.* 2014 Aug 05 [PMID: 25130456] (FLOW, Human)

Green TL, Santos MF, Ejaeidi AA et al. Toll-like receptor (TLR) expression of immune system cells from metastatic breast cancer patients with circulating tumor cells. *Exp. Mol. Pathol.* 2014 May 14 [PMID: 24836676] (Flow-IC, Human)

Details:

Human peripheral whole blood (subjected to red cell lysis): Figs 1, 2 & Tables 2,3.

Wang CH, Eng HL, Lin KH et al. Functional Polymorphisms of TLR8 Are Associated With Hepatitis C Virus Infection. *Immunology* 2013 Nov 8 [PMID: 24205871] (FLOW, Human)

Levy O, Suter EE, Miller RL, Wessels MR. Unique efficacy of Toll-like receptor 8 agonists in activating human neonatal antigen-presenting cells. *Blood.* 2006 Aug 15 [PMID: 16638933] (Flow)

Details:

TLR8-PE, (IMG-321D): Flow cytometry, Figure 5

Wu J, Meng Z, Jiang M et al. Toll-like receptor-induced innate immune responses in non-parenchymal liver cells are cell type-specific. *Immunology.* 2010 Mar [PMID: 19922426]

van den Berk LC, Jansen BJ, Siebers-Vermeulen KG et al. Toll-like receptor triggering in cord blood mesenchymal stem cells. *J Cell Mol Med.* 2009 Sep [PMID: 20196781] (Human)

Details:

flow (cell surface) cytometry: TLR5 (IMG-663A), TLR6 (IMG-304), TLR8 (IMG-321). Human mesenchymal stem cells, Fig 1C.

Pietschmann K, Beetz S, Welte S et al. Toll-like receptor expression and function in subsets of human gammadelta T lymphocytes. *Scand J Immunol.* 2009 Sep [PMID: 19703014] (Flow-IC, Human)

Details:

Flow (cell surface), Human T cell subsets (V sigma 1 and V sigma 2) isolated from PBMCs, Fig 3. 2. TLR6/CD286 (IMG-304A) & TLR8/CD288 PE (IMG-321D): Flow (intracellular), Human T cell subsets (V sigma 1 and V sigma 2) isolated from PBMCs, Fig 3.

Biasin M, Piacentini L, Lo Caputo S et al. TLR activation pathways in HIV-1-exposed seronegative individuals. *J Immunol.* 2010 Mar 1 [PMID: 20124101] (Flow-CS)

Details:

TLR8 FITC (IMG-321C): Flow cell surface (CD4+ and CD14+ isolated from PBMC); Fig 3, Fig 4, Table 1.

More publications at <http://www.novusbio.com/NBP2-24817>



Novus Biologicals USA

8100 Southpark Way, A-8
Littleton, CO 80120
USA
Phone: 303.730.1950
Toll Free: 1.888.506.6887
Fax: 303.730.1966
novus@novusbio.com

Novus Biologicals Canada

461 North Service Road West, Unit B37
Oakville, ON L6M 2V5
Canada
Phone: 905.827.6400
Toll Free: 855.668.8722
Fax: 905.827.6402
canada@novusbio.com

Novus Biologicals Europe

19 Barton Lane
Abingdon Science Park
Abingdon, OX14 3NB, United Kingdom
Phone: (44) (0) 1235 529449
Free Phone: 0800 37 34 15
Fax: (44) (0) 1235 533420
info@bio-techne.com

General Contact Information

www.novusbio.com
Technical Support: technical@novusbio.com
Orders: orders@novusbio.com
General: novus@novusbio.com

Products Related to NBP2-24817

NBP2-26231	Imidazoquinoline Resiquimod (R-848), TLR7 and TLR8 ligand
NBP1-43778-0.1mg	Mouse IgG1 Kappa Light Chain Isotype Control (P3.6.2.8.1) [PE]
NBP2-24818	TLR8 Antibody (44C143) [Biotin]
H00051311-P01-2ug	Recombinant Human TLR8 Protein

Limitations

This product is for research use only and is not approved for use in humans or in clinical diagnosis. Primary Antibodies are guaranteed for 1 year from date of receipt.

For more information on our 100% guarantee, please visit www.novusbio.com/guarantee

Earn gift cards/discounts by submitting a review: www.novusbio.com/reviews/submit/NBP2-24817

Earn gift cards/discounts by submitting a publication using this product:
www.novusbio.com/publications

