

# Product Datasheet

## mCherry Antibody NBP1-96752SS

Unit Size: 0.025 ml

Store at 4C short term. Aliquot and store at -20C long term. Avoid freeze-thaw cycles.

[www.novusbio.com](http://www.novusbio.com)



[support@novusbio.com](mailto:support@novusbio.com)

**Publications: 9**

Protocols, Publications, Related Products, Reviews, Research Tools and Images at:  
[www.novusbio.com/NBP1-96752](http://www.novusbio.com/NBP1-96752)

Updated 6/15/2014 v.20.1

**NBP1-96752SS**

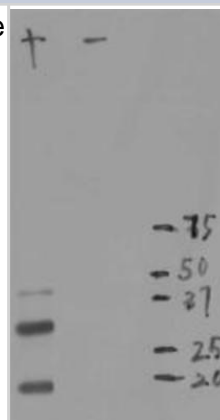
mCherry Antibody (1C51)

<b>Product Information</b>	
<b>Unit Size</b>	0.025 ml
<b>Concentration</b>	1 mg/ml
<b>Storage</b>	Store at 4C short term. Aliquot and store at -20C long term. Avoid freeze-thaw cycles.
<b>Clonality</b>	Monoclonal
<b>Clone</b>	1C51
<b>Preservative</b>	10mM Sodium Azide
<b>Isotype</b>	IgG2a
<b>Purity</b>	Protein G purified
<b>Buffer</b>	PBS
<b>Target Molecular Weight</b>	28 kDa
<b>Product Description</b>	
<b>Host</b>	Mouse
<b>Species</b>	All Species
<b>Species Reactivity</b>	This antibody detects mCherry.
<b>Specificity/Sensitivity</b>	Does not cross react with GFP.
<b>Immunogen</b>	Recombinant full length His tagged mCherry purified from E. coli.
<b>Product Application Details</b>	
<b>Applications</b>	Western Blot, Immunocytochemistry/Immunofluorescence
<b>Recommended Dilutions</b>	Immunocytochemistry/Immunofluorescence 1:100-1:500, Western Blot 1:1000-1:2000
<b>Application Notes</b>	This mCherry (1C51) antibody is useful for Immunocytochemistry/Immunofluorescence and Western blot, where a band can be seen at approximately 28 kDa.

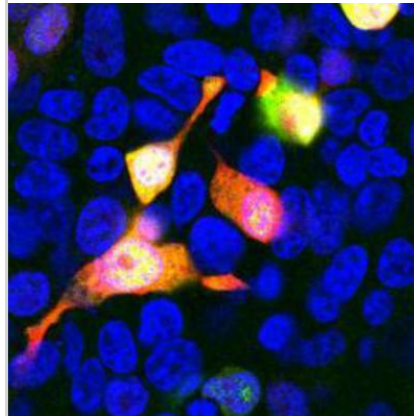


## Images

Western Blot: mCherry Antibody (1C51) [NBP1-96752] - WB assay of the crude extract of Hek293 cells transfected with pFin-EF1-mCherry vector (lane +) and an equal amount of protein extract from untransfected Hek293 cells (lane -). NBP1-96752 binds a major band running at about 28kDa corresponding to intact full-length mCherry. The two other bands are clearly processed forms of mCherry as they are not present in non-transfected Hek293 cells.



Immunocytochemistry/Immunofluorescence: mCherry Antibody (1C51) [NBP1-96752] - shows Hek293 cells transfected with mCherry and visualized in red. The cells were stained with NBP1-96752 in the green channel, and visualized using a confocal microscope. Transfected cells are yellow, showing overlap of the mCherry and NBP1-96752. Untransfected Hek293 cells do not express Cherry and do not stain with the antibody, but their nuclei can be visualized using a DNA stain (blue).



## Publications

Yousef H, Morgenthaler A, Schlesinger C et al. Age-Associated Increase in BMP Signaling inhibits Hippocampal Neurogenesis. *Stem Cells*. 2014 Dec 23 [PMID: 25538007]

Andrews OE, Cha DJ, Wei C, Patton JG. RNAi-Mediated Gene silencing in Zebrafish Triggered by Convergent Transcription *Sci Rep*. 2014 Jun 09 [PMID: 24909225] (WB)

### Details:

mCherry antibody (clone 1C51) used in WB - At 72 hpf, GFP+ embryos were de-yolked and protein lysates were prepared from 30 embryos in lysis buffer. 25 µg of total protein was loaded per lane, Lanes 1 and 2 correspond to UIC embryos from 2 separate clutches, Lane 3 (empty), Lane 4: CT-mCherry injected embryos, Lane 5: CT-mCherry + 2.5ng Dicer MO, Lane 6: non-CT mCherry injected embryos. Alpha-tubulin was detected at 50 kDa whereas the band at ~27kDa corresponds to mCherry (Supplemental Figure 1; cropped image in Figure 2C).

Liang S, Varrecchia M, Ishida K, Jolly ER. Evaluation of schistosome promoter expression for transgenesis and genetic analysis. *PLoS ONE*. 2014 May 26 [PMID: 24858918] (WB)

Li Y, Low LH, Putz U et al. Rab5 and Ndfip1 are involved in Pten ubiquitination and nuclear trafficking. *Traffic*. 2014 May 05 [PMID: 24798731] (WB)

Hiester KG, Santy LC. The cytohesin coiled-coil domain interacts with threonine 276 to control membrane association. *PLoS One* 2013 Nov 26 [PMID: 24303080] (WB)

Ahier A, Jarriault S. Simultaneous Expression of Multiple Proteins Under a Single Promoter in *Caenorhabditis elegans* via a Versatile 2A-Based Toolkit. *Genetics* 2013 Dec 20 [PMID: 24361941] (WB)

Hiester KG, Santy LC. et al. The Cytohesin Coiled-Coil Domain Interacts with Threonine 276 to Control Membrane Association. *PLoS One*. 2013 Nov 26 [PMID: 24303080] (WB)

Liang S, Knight M, Jolly ER et al. Polyethyleneimine Mediated DNA Transfection in Schistosome Parasites and Regulation of the WNT Signaling Pathway by a Dominant-Negative SmMef2. *PLoS Negl Trop Dis* 2013 Jul 25 [PMID: 23936566] (WB)

Yamaguchi S, Reid DA, Rothenberg E et al. Changes in Psp protein binding partners, localization and behaviour upon activation of the *Yersinia enterocolitica* phage shock protein response *Mol Microbiol* 2013 Jan 7 [PMID: 23290031] (WB)





### **Novus Biologicals USA**

8100 Southpark Way, A-8  
Littleton, CO 80120  
USA  
Phone: 303.730.1950  
Toll Free: 1.888.506.6887  
Fax: 303.730.1966  
novus@novusbio.com

### **Novus Biologicals Canada**

461 North Service Road West, Unit B37  
Oakville, ON L6M 2V5  
Canada  
Phone: 905.827.6400  
Toll Free: 855.668.8722  
Fax: 905.827.6402  
canada@novusbio.com

### **Novus Biologicals Europe**

19 Barton Lane  
Abingdon Science Park  
Abingdon, OX14 3NB, United Kingdom  
Phone: (44) (0) 1235 529449  
Free Phone: 0800 37 34 15  
Fax: (44) (0) 1235 533420  
info@bio-techne.com

### **General Contact Information**

www.novusbio.com  
Technical Support: technical@novusbio.com  
Orders: orders@novusbio.com  
General: novus@novusbio.com

### **Limitations**

This product is for research use only and is not approved for use in humans or in clinical diagnosis. Primary Antibodies are guaranteed for 1 year from date of receipt.

**For more information on our guarantee, please visit [www.novusbio.com/guarantee](http://www.novusbio.com/guarantee).**

