

Product Datasheet

Calreticulin Antibody NBP1-47518SS

Unit Size: 0.025 ml

Store at 4C short term. Aliquot and store at -20C long term. Avoid freeze-thaw cycles.

www.novusbio.com



support@novusbio.com

Protocols, Publications, Related Products, Reviews, Research Tools and Images at:
www.novusbio.com/NBP1-47518

Updated 6/15/2014 v.20.1

NBP1-47518SS

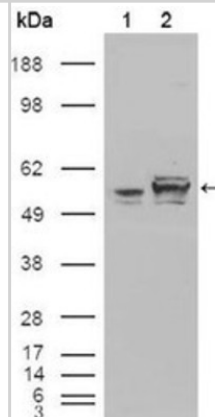
Calreticulin Antibody (1G6A7)

Product Information	
Unit Size	0.025 ml
Concentration	1.0 mg/ml
Storage	Store at 4C short term. Aliquot and store at -20C long term. Avoid freeze-thaw cycles.
Clonality	Monoclonal
Clone	1G6A7
Preservative	0.03% Sodium Azide
Isotype	IgG2a
Purity	Ammonium sulfate precipitation
Buffer	PBS
Target Molecular Weight	48 kDa
Product Description	
Host	Mouse
Gene ID	811
Gene Symbol	CALR
Species	Human, Mouse
Species Reactivity	Human and mouse.
Marker	Endoplasmic Reticulum Marker
Immunogen	A synthetic peptide corresponding to the C-terminus (EEEDVPGQAKDELG) of human Calreticulin, conjugated to KLH. [UniProt# P27797]
Product Application Details	
Applications	Western Blot, ELISA, Flow Cytometry, Immunocytochemistry/Immunofluorescence, Immunohistochemistry, Immunohistochemistry-Paraffin
Recommended Dilutions	ELISA 1:10000, Flow Cytometry 1 ug per million cells, Immunocytochemistry/Immunofluorescence 1:200-1:1000, Immunohistochemistry 1:200-1:1000, Immunohistochemistry-Paraffin 1:200-1:1000, Western Blot 1:500-1:2000
Application Notes	This Calreticulin (1G6A7) antibody is useful in Western Blot, Immunocytochemistry/Immunofluorescence, Immunohistochemistry on paraffin-embedded sections and ELISA.

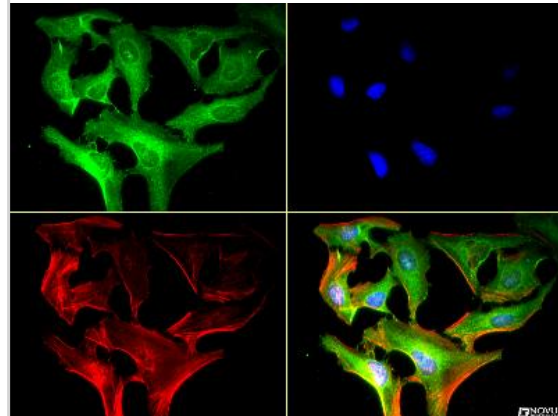


Images

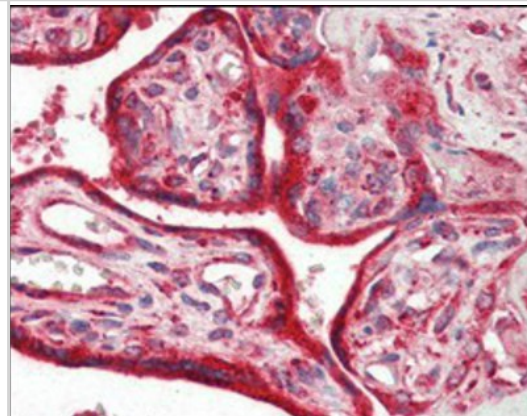
Western Blot: Calreticulin Antibody (1G6A7) [NBP1-47518] - Western blot analysis using Calreticulin mouse mAb against HEK293T cells transfected with the pCMV6-ENTRY control (1) and pCMV6-ENTRY Calreticulin cDNA (2).



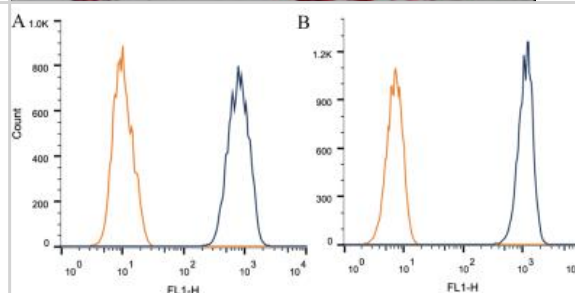
Immunocytochemistry/Immunofluorescence: Calreticulin Antibody (1G6A7) [NBP1-47518] - The Calreticulin antibody was tested in HeLa cells at a 1:250 dilution against Dylight 488 (Green). Actin was counterstained against Phalloidin 568 (Red) and cells were mounted in DAPI Fluoromount (Blue).



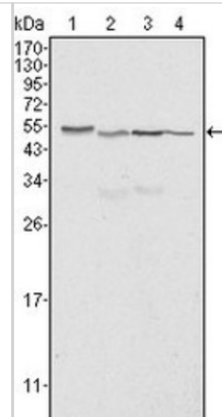
Immunohistochemistry-Paraffin: Calreticulin Antibody (1G6A7) [NBP1-47518] - Immunohistochemical analysis of paraffin-embedded human placenta tissues using anti-Calreticulin mAb.



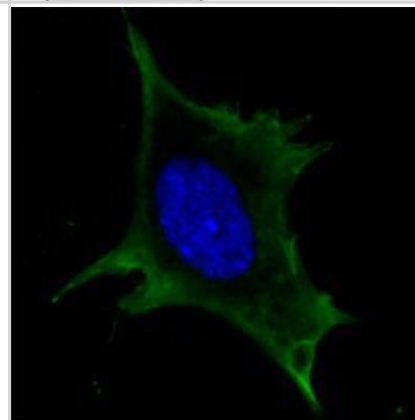
Flow Cytometry: Calreticulin Antibody (1G6A7) [NBP1-47518] - Intracellular flow cytometric staining of 1×10^6 CHO (A) and HEK-293 (B) cells using Calreticulin antibody (dark blue). Isotype control shown in orange. An antibody concentration of $1 \mu\text{g}/1 \times 10^6$ cells was used.



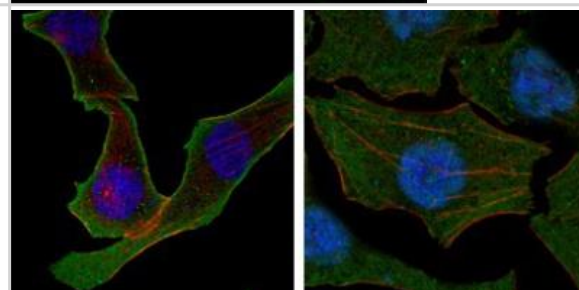
Western Blot: Calreticulin Antibody (1G6A7) [NBP1-47518] - Western blot analysis using anti-Calreticulin mAb against Hela (1), A549 (2), NTERA2 (3) and MCF-7 (4) cell lysate.



Immunocytochemistry/Immunofluorescence: Calreticulin Antibody (1G6A7) [NBP1-47518] - Confocal immunofluorescence analysis of 3T3-L1 cells using anti-Calreticulin mAb (green). Blue: DRAQ5 fluorescent DNA dye.



Immunocytochemistry/Immunofluorescence: Calreticulin Antibody (1G6A7) [NBP1-47518] - Confocal immunofluorescence analysis of SKBR-3 (left) and A549 (right) cells using anti-Calreticulin mAb (green). Red: Actin filaments have been labeled with DY-554 phalloidin. Blue: DRAQ5 fluorescent DNA dye.





Novus Biologicals USA

8100 Southpark Way, A-8
Littleton, CO 80120
USA
Phone: 303.730.1950
Toll Free: 1.888.506.6887
Fax: 303.730.1966
novus@novusbio.com

Novus Biologicals Canada

461 North Service Road West, Unit B37
Oakville, ON L6M 2V5
Canada
Phone: 905.827.6400
Toll Free: 855.668.8722
Fax: 905.827.6402
canada@novusbio.com

Novus Biologicals Europe

19 Barton Lane
Abingdon Science Park
Abingdon, OX14 3NB, United Kingdom
Phone: (44) (0) 1235 529449
Free Phone: 0800 37 34 15
Fax: (44) (0) 1235 533420
info@bio-techne.com

General Contact Information

www.novusbio.com
Technical Support: technical@novusbio.com
Orders: orders@novusbio.com
General: novus@novusbio.com

Limitations

This product is for research use only and is not approved for use in humans or in clinical diagnosis. Primary Antibodies are guaranteed for 1 year from date of receipt.

For more information on our guarantee, please visit www.novusbio.com/guarantee.

