

Product Datasheet

beta-III Tubulin Antibody NBP1-42568SS

Unit Size: 0.025 ml

Store at 4C short term. Aliquot and store at -20C long term. Avoid freeze-thaw cycles.

www.novusbio.com



support@novusbio.com

Reviews: 2

Protocols, Publications, Related Products, Reviews, Research Tools and Images at:
www.novusbio.com/NBP1-42568

Updated 6/15/2014 v.20.1

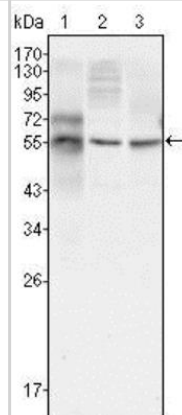
NBP1-42568SS

Tubulin Beta 3 Antibody (2E9)

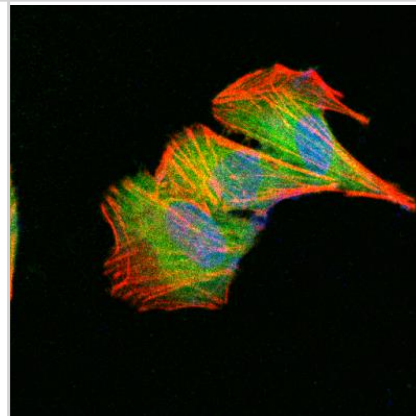
Product Information	
Unit Size	0.025 ml
Concentration	This product is unpurified. The exact concentration of antibody is not quantifiable.
Storage	Store at 4C short term. Aliquot and store at -20C long term. Avoid freeze-thaw cycles.
Clonality	Monoclonal
Clone	2E9
Preservative	0.03% Sodium Azide
Isotype	IgG1
Purity	Ascites
Target Molecular Weight	50 kDa
Product Description	
Host	Mouse
Gene ID	10381
Gene Symbol	TUBB3
Species	Human
Species Reactivity	Human.
Marker	Neuronal Marker
Immunogen	Full length recombinant human Tubulin Beta 3 expressed in E. coli. [UniProt# Q13509].
Product Application Details	
Applications	Western Blot, Simple Western, ELISA, Flow Cytometry, Immunocytochemistry/Immunofluorescence
Recommended Dilutions	Western Blot 1:500-1:2000, Flow Cytometry 1:200-1:400, ELISA 1:10000, Immunocytochemistry/Immunofluorescence 1:200-1:1000, Simple Western 1:500
Application Notes	This Tubulin Beta 3 (2E9) antibody is useful in Western Blot, Immunocytochemistry/Immunofluorescence, Flow cytometry and ELISA. In Simple Western only 10-15 uL of the recommended dilution is used per data point.

Images

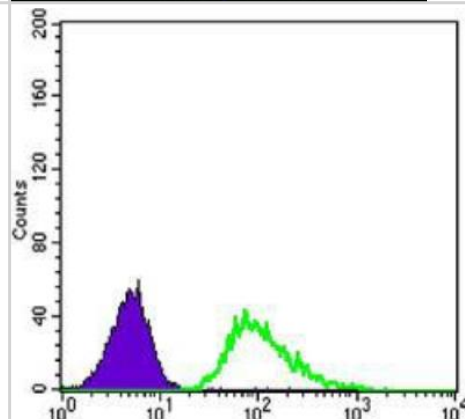
Western Blot: Tubulin Beta 3 Antibody (2E9) [NBP1-42568] - Analysis of Tubulin Beta 3 mouse mAb against HepG2 (1), A549 (2) and Hela (3) cell lysates.



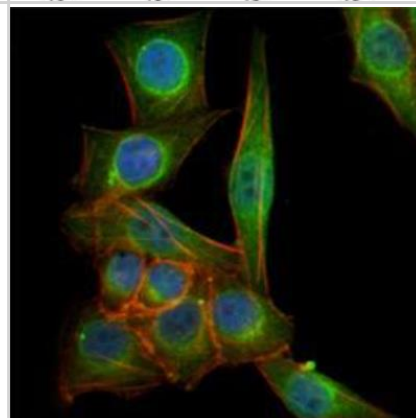
Immunocytochemistry/Immunofluorescence: Tubulin Beta 3 Antibody (2E9) [NBP1-42568] - IF Confocal analysis of SHSY5Y cells using Tubulin Beta 3 antibody (NBP1-42568, 1:5). An Alexa Fluor 488-conjugated Goat to mouse IgG was used as secondary antibody (green). Actin filaments were labeled with Alexa Fluor 568 phalloidin (red). DAPI was used to stain the cell nuclei (blue).



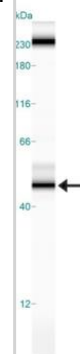
Flow Cytometry: Tubulin Beta 3 Antibody (2E9) [NBP1-42568] - Analysis of A549 cells using anti-Tubulin Beta 3 mAb (green) and negative control (purple).



Immunocytochemistry/Immunofluorescence: Tubulin Beta 3 Antibody (2E9) [NBP1-42568] - Analysis of PANC-1 cells using Tubulin Beta 3 mouse mAb (green). Blue: DRAQ5 fluorescent DNA dye. Red: Actin filaments have been labeled with Alexa Fluor-555 phalloidin.



Simple Western: Tubulin Beta 3 Antibody (2E9) [NBP1-42568] - Simple Western lane view shows a specific band for Tubulin Beta 3 in 1.0 mg/ml of HeLa lysate. This experiment was performed under reducing conditions using the 12-230 kDa separation system.





Novus Biologicals USA

8100 Southpark Way, A-8
Littleton, CO 80120
USA
Phone: 303.730.1950
Toll Free: 1.888.506.6887
Fax: 303.730.1966
novus@novusbio.com

Novus Biologicals Canada

461 North Service Road West, Unit B37
Oakville, ON L6M 2V5
Canada
Phone: 905.827.6400
Toll Free: 855.668.8722
Fax: 905.827.6402
canada@novusbio.com

Novus Biologicals Europe

19 Barton Lane
Abingdon Science Park
Abingdon, OX14 3NB, United Kingdom
Phone: (44) (0) 1235 529449
Free Phone: 0800 37 34 15
Fax: (44) (0) 1235 533420
info@bio-techne.com

General Contact Information

www.novusbio.com
Technical Support: technical@novusbio.com
Orders: orders@novusbio.com
General: novus@novusbio.com

Limitations

This product is for research use only and is not approved for use in humans or in clinical diagnosis. Primary Antibodies are guaranteed for 1 year from date of receipt.

For more information on our guarantee, please visit www.novusbio.com/guarantee.

