

Product Datasheet

S100A8 Antibody

NBP1-42076

Unit Size: 0.1 ml

Store at -20C. Avoid freeze-thaw cycles.

www.novusbio.com



support@novusbio.com

Protocols, Publications, Related Products, Reviews, Research Tools and Images at:
www.novusbio.com/NBP1-42076

Updated 9/27/2011 v.20.1

NBP1-42076

S100A8 Antibody (EPR3554)

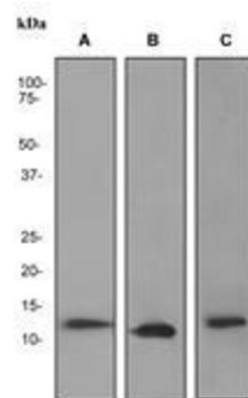
Product Information	
Unit Size	0.1 ml
Concentration	This product is unpurified. The exact concentration of antibody is not quantifiable.
Storage	Store at -20C. Avoid freeze-thaw cycles.
Clonality	Monoclonal
Clone	EPR3554
Preservative	0.01% Sodium Azide
Isotype	IgG
Purity	Tissue culture supernatant
Buffer	PBS 49%, Glycerol 50%, BSA 0.05%
Target Molecular Weight	11 kDa kDa

Product Description	
Host	Rabbit
Gene ID	6279
Gene Symbol	S100A8
Species	Human, Mouse
Species Reactivity	Reacts with: Mouse, Human
Immunogen	A synthetic peptide corresponding to N-terminal region of human MRP8 / S100-A8 was used as an immunogen.
Notes	Manufactured incorporating RabMAb® technology under Epitomics US patents, No 5675,063 and 7,429,487, owned by Abcam.

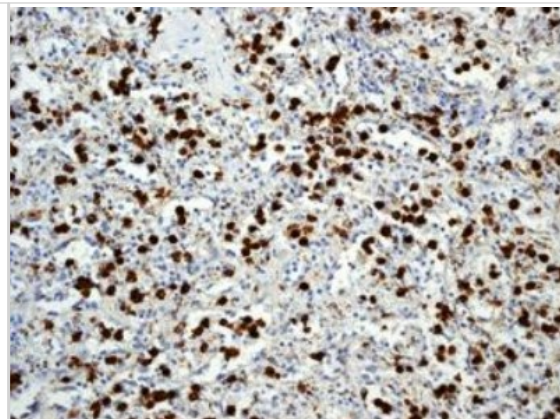
Product Application Details	
Applications	Western Blot, Flow Cytometry, Immunocytochemistry/Immunofluorescence, Immunohistochemistry, Immunohistochemistry-Paraffin, Immunoprecipitation
Recommended Dilutions	Flow Cytometry 1/100, Immunocytochemistry/Immunofluorescence 1:100-250, Immunohistochemistry 1:10-1:2000, Immunohistochemistry-Paraffin 1:100-250, Immunoprecipitation 1:20, Western Blot 1:2000-10000

Images

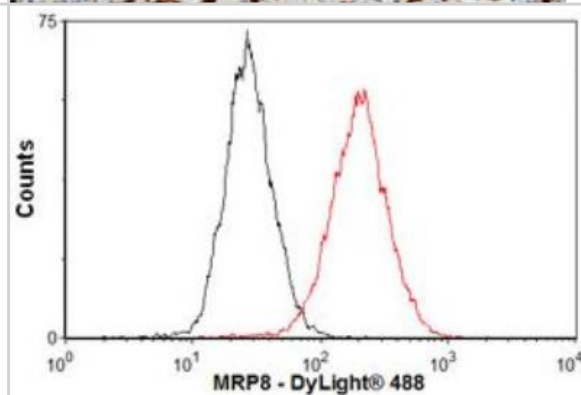
Western Blot: S100A8 Antibody (EPR3554) [NBP1-42076] - (A) Human spleen, (B) PBMC, (C) HL 60 cell lysates.



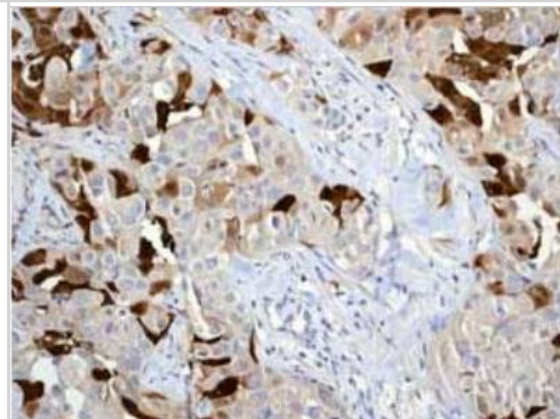
Immunohistochemistry-Paraffin: S100A8 Antibody (EPR3554) [NBP1-42076] - Human spleen staining.



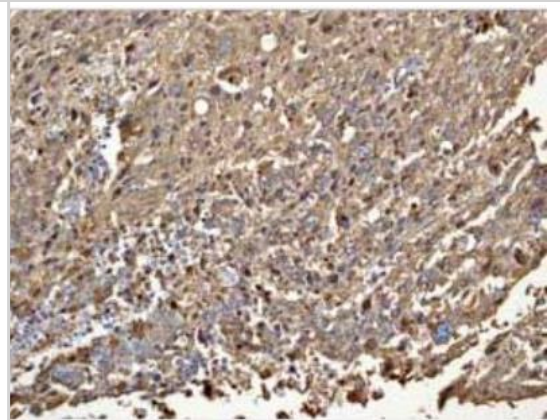
Flow Cytometry: S100A8 Antibody (EPR3554) [NBP1-42076] - Overlay histogram showing THP1 cells stained with Anti-MRP8 antibody [EPR3554] (red line).



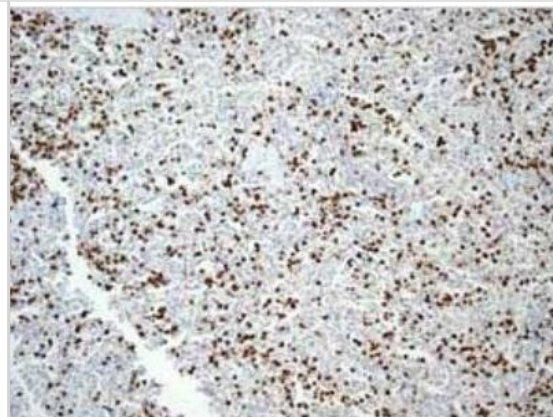
Immunohistochemistry-Paraffin: S100A8 Antibody (EPR3554) [NBP1-42076] - Staining in Breast carcinoma tissue.



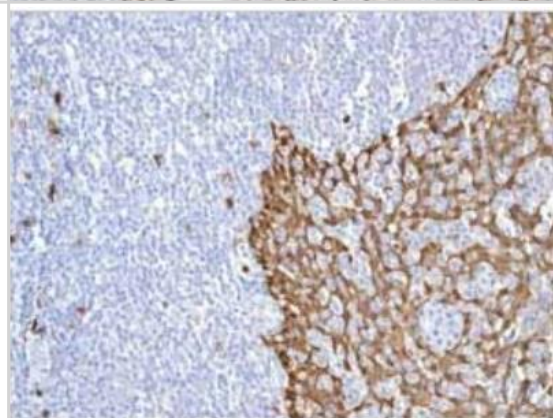
Immunohistochemistry-Paraffin: S100A8 Antibody (EPR3554) [NBP1-42076] - Positive staining in Cervical carcinoma tissue.



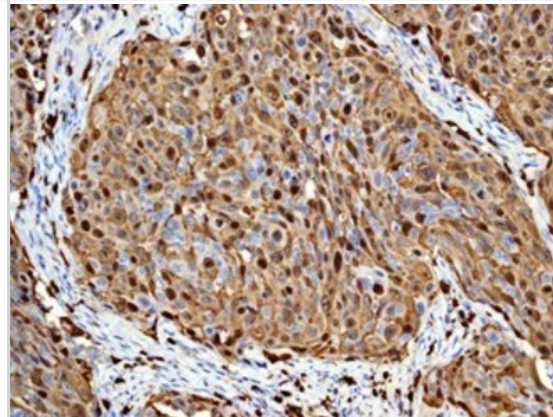
Immunohistochemistry-Paraffin: S100A8 Antibody (EPR3554) [NBP1-42076] - Positive staining in Normal spleen tissue.



Immunohistochemistry-Paraffin: S100A8 Antibody (EPR3554) [NBP1-42076] - Positive staining in Normal tonsil tissue.



Immunohistochemistry-Paraffin: S100A8 Antibody (EPR3554) [NBP1-42076] - Human cervical carcinoma.





Novus Biologicals USA

8100 Southpark Way, A-8
Littleton, CO 80120
USA
Phone: 303.730.1950
Toll Free: 1.888.506.6887
Fax: 303.730.1966
novus@novusbio.com

Novus Biologicals Canada

461 North Service Road West, Unit B37
Oakville, ON L6M 2V5
Canada
Phone: 905.827.6400
Toll Free: 855.668.8722
Fax: 905.827.6402
canada@novusbio.com

Novus Biologicals Europe

12 Cambridge Science Park
Cambridge, CB4 0FQ
United Kingdom
Phone: +44 (0)1223 426001
Fax: +44 (0)871 971 1635
europe@novusbio.com

General Contact Information

www.novusbio.com
Technical Support: technical@novusbio.com
Orders: orders@novusbio.com
General: novus@novusbio.com

Products Related to NBP1-42076

H00006279-P01-10ug	S100A8 Recombinant Protein
H00006279-R01-20nmol	S100A8 RNAi
NB730-H	Goat anti-Rabbit IgG Antibody [HRP]
NB810-56910	Rabbit IgG Isotype Control

Limitations

This product is for research use only and is not approved for use in humans or in clinical diagnosis. Primary Antibodies are guaranteed for 1 year from date of receipt.

For more information on our guarantee, please visit www.novusbio.com/guarantee.

