

# Product Datasheet

## ATF6 Antibody (70B1413.1) [FITC] NBP1-40256F

Unit Size: 0.05 ml

Store at 4C in the dark.

[www.novusbio.com](http://www.novusbio.com)



[technical@novusbio.com](mailto:technical@novusbio.com)

Protocols, Publications, Related Products, Reviews, Research Tools and Images at:  
[www.novusbio.com/NBP1-40256F](http://www.novusbio.com/NBP1-40256F)

Updated 2/1/2018 v.20.1

Earn rewards for product  
reviews and publications.

Submit a publication at [www.novusbio.com/publications](http://www.novusbio.com/publications)

Submit a review at [www.novusbio.com/reviews/destination/NBP1-40256F](http://www.novusbio.com/reviews/destination/NBP1-40256F)



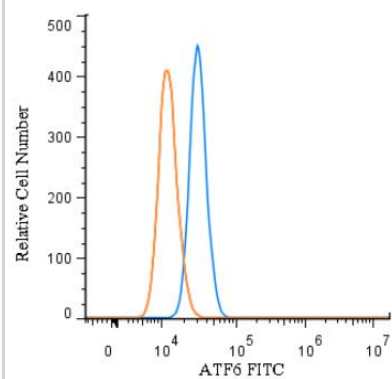
**NBP1-40256F**

ATF6 Antibody (70B1413.1) [FITC]

<b>Product Information</b>	
<b>Unit Size</b>	0.05 ml
<b>Concentration</b>	Please see the vial label for concentration. If unlisted please contact technical services.
<b>Storage</b>	Store at 4C in the dark.
<b>Clonality</b>	Monoclonal
<b>Clone</b>	70B1413.1
<b>Preservative</b>	0.05% Sodium Azide
<b>Isotype</b>	IgG1 Kappa
<b>Conjugate</b>	FITC
<b>Purity</b>	Protein G purified
<b>Buffer</b>	PBS
<b>Product Description</b>	
<b>Host</b>	Mouse
<b>Gene ID</b>	22926
<b>Gene Symbol</b>	ATF6
<b>Species</b>	Human, Mouse, Rat, Porcine, Fish, Hamster, Rabbit
<b>Reactivity Notes</b>	Porcine reactivity reported in scientific literature (PMID: 29149522).Cross reacts with Grouper fish.
<b>Specificity/Sensitivity</b>	This ATF6 antibody detects both the full length and the cleaved/active protein.
<b>Immunogen</b>	This monoclonal antibody was made against a partial protein containing amino acids 1-273 of human ATF6.
<b>Notes</b>	This conjugate is made on demand. Actual recovery may vary from the stated volume of this product. The volume will be greater than or equal to the unit size stated on the datasheet.
<b>Product Application Details</b>	
<b>Applications</b>	Flow Cytometry, Flow (Intracellular), Immunocytochemistry/Immunofluorescence, Immunohistochemistry, Immunohistochemistry-Frozen, Immunohistochemistry-Paraffin
<b>Recommended Dilutions</b>	Flow Cytometry, Immunohistochemistry, Immunocytochemistry/Immunofluorescence, Immunohistochemistry-Paraffin, Immunohistochemistry-Frozen, Flow (Intracellular)
<b>Application Notes</b>	Optimal dilution of this antibody should be experimentally determined.

## Images

Flow (Intracellular): ATF6 Antibody (70B1413.1) [FITC] [NBP1-40256F] - An intracellular stain was performed on HeLa cells with ATF6 Antibody (70B1413.1) NBP1-40256F (blue) and a matched isotype control (orange). Cells were fixed with 4% PFA and then permeablized with 0.1% saponin. Cells were incubated in an antibody dilution of 10  $\mu$ g/mL for 30 minutes at room temperature. Both antibodies were conjugated to FITC.





### Novus Biologicals USA

8100 Southpark Way, A-8  
Littleton, CO 80120  
USA  
Phone: 303.730.1950  
Toll Free: 1.888.506.6887  
Fax: 303.730.1966  
novus@novusbio.com

### Novus Biologicals Canada

461 North Service Road West, Unit B37  
Oakville, ON L6M 2V5  
Canada  
Phone: 905.827.6400  
Toll Free: 855.668.8722  
Fax: 905.827.6402  
canada@novusbio.com

### Novus Biologicals Europe

19 Barton Lane  
Abingdon Science Park  
Abingdon, OX14 3NB, United Kingdom  
Phone: (44) (0) 1235 529449  
Free Phone: 0800 37 34 15  
Fax: (44) (0) 1235 533420  
info@bio-techne.com

### General Contact Information

www.novusbio.com  
Technical Support: technical@novusbio.com  
Orders: orders@novusbio.com  
General: novus@novusbio.com

### Products Related to NBP1-40256F

---

NBP1-43956-0.1mg	Canine, Porcine, Mouse IgG1 Kappa Light Chain Isotype Control (P3.6.2.8.1) [FITC]
H00022926-P01-10ug	Recombinant Human ATF6 Protein
NBP1-70778	ATF6 Cell Lysate
NB100-2323	IRE1 alpha [p Ser724] Antibody

---

### Limitations

This product is for research use only and is not approved for use in humans or in clinical diagnosis. Primary Antibodies are guaranteed for 1 year from date of receipt.

For more information on our 100% guarantee, please visit [www.novusbio.com/guarantee](http://www.novusbio.com/guarantee)

Earn gift cards/discounts by submitting a review: [www.novusbio.com/reviews/submit/NBP1-40256F](http://www.novusbio.com/reviews/submit/NBP1-40256F)

Earn gift cards/discounts by submitting a publication using this product:  
[www.novusbio.com/publications](http://www.novusbio.com/publications)

