

Product Datasheet

CCL2/MCP1 Antibody NBP1-07035SS

Unit Size: 0.025 ml

Store at 4C short term. Aliquot and store at -20C long term. Avoid freeze-thaw cycles.

www.novusbio.com



support@novusbio.com

Publications: 2

Protocols, Publications, Related Products, Reviews, Research Tools and Images at:
www.novusbio.com/NBP1-07035

Updated 6/15/2014 v.20.1

NBP1-07035SS

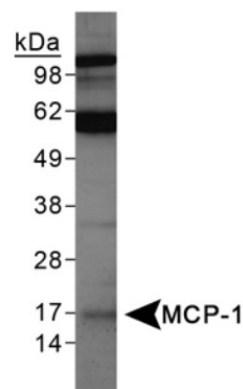
CCL2/MCP1 Antibody

Product Information	
Unit Size	0.025 ml
Concentration	1.22 mg/ml
Storage	Store at 4C short term. Aliquot and store at -20C long term. Avoid freeze-thaw cycles.
Clonality	Polyclonal
Preservative	0.1% Sodium Azide
Purity	Immunogen affinity purified
Buffer	PBS, 30% glycerol
Target Molecular Weight	16 kDa
Product Description	
Host	Rabbit
Gene ID	6347
Gene Symbol	CCL2
Species	Human, Rat
Immunogen	Synthetic peptide made to an internal portion of rat MCP1 (within residues 15-40). [Swiss-Prot# P14844]
Product Application Details	
Applications	Western Blot, Blocking/Neutralizing, Immunocytochemistry/Immunofluorescence, Immunohistochemistry, Immunohistochemistry-Frozen
Recommended Dilutions	Blocking/Neutralizing, Immunocytochemistry/Immunofluorescence 1:2000, Immunohistochemistry, Immunohistochemistry-Frozen, Western Blot 1:1000
Application Notes	This MCP1 antibody is useful for Immunocytochemistry/Immunofluorescence and Western blot, where a band is seen at ~16 kDa. In ICC/IP secretory vesicles staining was observed in HeLa cells. IHC-Fr and B/N applications are reported in research publications with PMIDs 22402584 and 22778093 respectively.

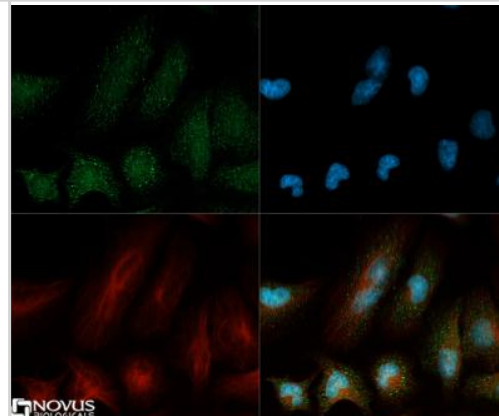


Images

Western Blot: MCP1 Antibody [NBP1-07035] - Western Blot on TNF alpha treated PC12 lysates.



Immunocytochemistry/Immunofluorescence: MCP1 Antibody [NBP1-07035] - MCP1 antibody was tested in HeLa cells with Dylight 488 (green). Nuclei and alpha-tubulin were counterstained with DAPI (blue) and Dylight 550 (red).



Publications

Lamont EA, O'Grady SM, Davis WC et al. Infection with Mycobacterium avium subsp. paratuberculosis Results in Rapid Interleukin-1 beta Release and Macrophage Transepithelial Migration Infect Immun 2012 Sep [PMID: 22778093] (B/N, Human)

Fet NG, Fiebeler A, Klinge U et al. Reduction of activated macrophages after ischaemia-reperfusion injury diminishes oxidative stress and ameliorates renal damage Nephrol Dial Transplant 2012 Mar 8 [PMID: 22402584] (IHC, Rat)

Procedures

Western Blot Protocol for MCP1 Antibody (NBP1-07035)

Procedure Guide for NBP1-07035 - MCP-1 Antibody

Western Blot Protocol

1. Perform SDS-PAGE (4-12% MOPS) on samples to be analyzed, loading 40 ug of total protein per lane.
2. Transfer proteins to Nitrocellulose according to the instructions provided by the manufacturer of the transfer apparatus.
3. Rinse membrane with dH₂O and then stain the blot using Ponceau S for 1-2 minutes to access the transfer of proteins onto the nitrocellulose membrane. Rinse the blot in water to remove excess stain and mark the lane locations

and locations of molecular weight markers using a pencil.

4. Rinse the blot in TBS for approximately 5 minutes.
 5. Block the membrane using 5% NFDM + 1% BSA in TBS + Tween, 1 hour at RT.
 6. Rinse the membrane in dH₂O and then wash the membrane in wash buffer [TBS + 0.1% Tween] 3 times for 10 minutes each.
 7. Dilute the rabbit anti-MCP-1 primary antibody (NBP1-07035) in blocking buffer and incubate 1 hour at room temperature.
 8. Rinse the membrane in dH₂O and then wash the membrane in wash buffer [TBS + 0.1% Tween] 3 times for 10 minutes each.
 9. Apply the diluted rabbit-IgG HRP-conjugated secondary antibody in blocking buffer (as per manufacturers instructions) and incubate 1 hour at room temperature.
 10. Wash the blot in wash buffer [TBS + 0.1% Tween] 3 times for 10 minutes each (this step can be repeated as required to reduce background).
 11. Apply the detection reagent of choice in accordance with the manufacturers instructions (Pierce ECL).
- Note: Tween-20 can be added to the blocking or antibody dilution buffer at a final concentration of 0.05-0.2%, provided it does not interfere with antibody-antigen binding.

Immunocytochemistry/Immunofluorescence Protocol for MCP1 Antibody (NBP1-07035)

Immunocytochemistry Protocol

Culture cells to appropriate density in 35 mm culture dishes or 6-well plates.

1. Remove culture medium and add 10% formalin to the dish. Fix at room temperature for 30 minutes.
2. Remove the formalin and add ice cold methanol. Incubate for 5-10 minutes.
3. Remove methanol and add washing solution (i.e. PBS). Be sure to not let the specimen dry out. Wash three times for 10 minutes.
4. To block nonspecific antibody binding incubate in 10% normal goat serum from 1 hour to overnight at room temperature.
5. Add primary antibody at appropriate dilution and incubate at room temperature from 2 hours to overnight at room temperature.
6. Remove primary antibody and replace with washing solution. Wash three times for 10 minutes.
7. Add secondary antibody at appropriate dilution. Incubate for 1 hour at room temperature.
8. Remove antibody and replace with wash solution, then wash for 10 minutes. Add Hoechst 33258 to wash solution at 1:25,000 and incubate for 10 minutes. Wash a third time for 10 minutes.
9. Cells can be viewed directly after washing. The plates can also be stored in PBS containing Azide covered in Parafilm (TM). Cells can also be cover-slipped using Fluoromount, with appropriate sealing.

*The above information is only intended as a guide. The researcher should determine what protocol best meets their needs. Please follow safe laboratory procedures.



Novus Biologicals USA

8100 Southpark Way, A-8
Littleton, CO 80120
USA
Phone: 303.730.1950
Toll Free: 1.888.506.6887
Fax: 303.730.1966
novus@novusbio.com

Novus Biologicals Canada

461 North Service Road West, Unit B37
Oakville, ON L6M 2V5
Canada
Phone: 905.827.6400
Toll Free: 855.668.8722
Fax: 905.827.6402
canada@novusbio.com

Novus Biologicals Europe

19 Barton Lane
Abingdon Science Park
Abingdon, OX14 3NB, United Kingdom
Phone: (44) (0) 1235 529449
Free Phone: 0800 37 34 15
Fax: (44) (0) 1235 533420
info@bio-techne.com

General Contact Information

www.novusbio.com
Technical Support: technical@novusbio.com
Orders: orders@novusbio.com
General: novus@novusbio.com

Limitations

This product is for research use only and is not approved for use in humans or in clinical diagnosis. Primary Antibodies are guaranteed for 1 year from date of receipt.

For more information on our guarantee, please visit www.novusbio.com/guarantee.

