

Product Datasheet

GLUT9 Antibody **NBP1-06565SS**

Unit Size: 0.025 ml

Store at 4C short term. Aliquot and store at -20C long term. Avoid freeze-thaw cycles.

www.novusbio.com



support@novusbio.com

Protocols, Publications, Related Products, Reviews, Research Tools and Images at:
www.novusbio.com/NBP1-06565

Updated 2/9/2014 v.20.1

NBP1-06565SS

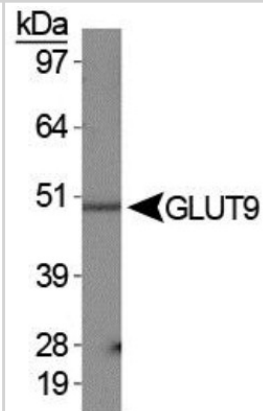
GLUT9 Antibody

Product Information	
Unit Size	0.025 ml
Concentration	1 mg/ml
Storage	Store at 4C short term. Aliquot and store at -20C long term. Avoid freeze-thaw cycles.
Clonality	Polyclonal
Preservative	0.05% Sodium Azide
Purity	Immunogen affinity purified
Buffer	Tris-glycine, 150 mM NaCl
Target Molecular Weight	58.7 kDa
Product Description	
Host	Rabbit
Gene ID	56606
Gene Symbol	SLC2A9
Species	Human, Mouse, Primate
Specificity/Sensitivity	This antibody is specific for the human GLUT9 protein Isoform 1 (SLC2A9-L).
Immunogen	Synthetic peptide made to an internal portion of human GLUT9 (within residues 10-60). [Swiss-Prot# Q9NRM0]
Product Application Details	
Applications	Western Blot, Immunohistochemistry-Paraffin
Recommended Dilutions	Immunohistochemistry-Paraffin 1:200 - 1:500, Western Blot 0.5 ug/ml

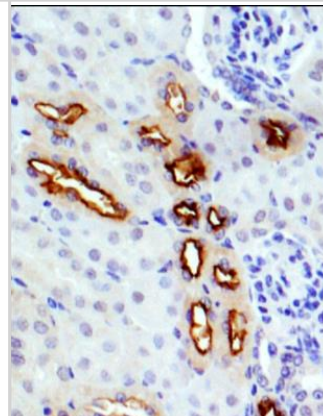


Images

Western Blot: GLUT9 Antibody [NBP1-06565] - Detection of GLUT9a in human kidney membrane prep.



Immunohistochemistry-Paraffin: GLUT9 Antibody [NBP1-06565] - IHC-P analysis mouse kidney section with GLUT9 antibody at 1:200 dilution. This antibody gave the expected staining of SLC2A9-L isoform in the tubular epithelial cells and the blood vessel endothelium.





Novus Biologicals USA

8100 Southpark Way, A-8
Littleton, CO 80120
USA
Phone: 303.730.1950
Toll Free: 1.888.506.6887
Fax: 303.730.1966
novus@novusbio.com

Novus Biologicals Canada

461 North Service Road West, Unit B37
Oakville, ON L6M 2V5
Canada
Phone: 905.827.6400
Toll Free: 855.668.8722
Fax: 905.827.6402
canada@novusbio.com

Novus Biologicals Europe

19 Barton Lane
Abingdon Science Park
Abingdon, OX14 3NB, United Kingdom
Phone: (44) (0) 1235 529449
Free Phone: 0800 37 34 15
Fax: (44) (0) 1235 533420
info@bio-techne.com

General Contact Information

www.novusbio.com
Technical Support: technical@novusbio.com
Orders: orders@novusbio.com
General: novus@novusbio.com

Limitations

This product is for research use only and is not approved for use in humans or in clinical diagnosis. Primary Antibodies are guaranteed for 1 year from date of receipt.

For more information on our guarantee, please visit www.novusbio.com/guarantee.

